

# Anti-CPAMD8 antibody ab122168

画像数 1

### 製品の概要

---

製品名	Anti-CPAMD8 antibody
製品の詳細	Rabbit polyclonal to CPAMD8
由来種	Rabbit
アプリケーション	<b>適用あり:</b> IHC-P
種交差性	<b>交差種:</b> Human
免疫原	antigen sequence: SDLGLNNITA KALAYGDTNC CRDGRSSKHP EENHADRRVP IGVDHVRSSV MVEAEGVPRA YTYSAFFCPS ERVHISTPNK YEFQVQR, corresponding to amino acids 879-966 of Human CPAMD8.

[Run BLAST with !\[\]\(e3f8612927870f2e0f9f5989e6dd3064\_img.jpg\)](#) [Run BLAST with !\[\]\(a86c7d1c9cb81c81614634a31267440d\_img.jpg\)](#)

**ポジティブ・コントロール** Human kidney tissue.

**特記事項** The Life Science industry has been in the grips of a reproducibility crisis for a number of years. Abcam is leading the way in addressing this with our range of recombinant monoclonal antibodies and knockout edited cell lines for gold-standard validation. Please check that this product meets your needs before purchasing.

If you have any questions, special requirements or concerns, please send us an inquiry and/or contact our Support team ahead of purchase. Recommended alternatives for this product can be found below, along with publications, customer reviews and Q&As

### 製品の特性

---

製品の状態	Liquid
保存方法	Shipped at 4°C. Upon delivery aliquot and store at -20°C. Avoid freeze / thaw cycles.
バッファー	pH: 7.20 Preservative: 0.02% Sodium azide Constituents: 40% Glycerol, 59% PBS
精製度	Immunogen affinity purified
ポリ/モノ	ポリクローナル
アイソタイプ	IgG

### アプリケーション

---

## The Abpromise guarantee

**Abpromise保証は、次のテスト済みアプリケーションにおけるab122168の使用に適用されます**

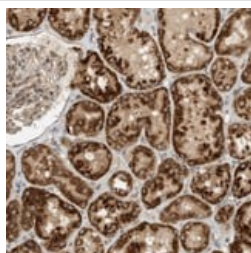
アプリケーションノートには、推奨の開始希釈率がありますが、適切な希釈率につきましてはご検討ください。

アプリケーション	Abreviews	特記事項
IHC-P		1/10 - 1/20. Perform heat mediated antigen retrieval with citrate buffer pH 6 before commencing with IHC staining protocol.

## ターゲット情報

組織特異性	Highly expressed in the kidney, brain and testis and to a lower extent in heart, liver and small intestine.
配列類似性	Belongs to the protease inhibitor I39 (alpha-2-macroglobulin) family. Contains 1 Kazal-like domain.
翻訳後修飾	Proteolytically cleaved into 2 chains of about 70 and 130 kDa. The fragments are not connected by disulfide bonds.
細胞内局在	Secreted. Cell membrane.

## 画像



ab122168 at 1/10 dilution staining CPAMD8 in Paraffin-embedded Human kidney tissue by Immunohistochemistry.

Immunohistochemistry (Formalin/PFA-fixed paraffin-embedded sections) - Anti-CPAMD8 antibody (ab122168)

**Please note:** All products are "FOR RESEARCH USE ONLY. NOT FOR USE IN DIAGNOSTIC PROCEDURES"

## Our Abpromise to you: Quality guaranteed and expert technical support

- Replacement or refund for products not performing as stated on the datasheet
- Valid for 12 months from date of delivery
- Response to your inquiry within 24 hours
- We provide support in Chinese, English, French, German, Japanese and Spanish
- Extensive multi-media technical resources to help you
- We investigate all quality concerns to ensure our products perform to the highest standards

If the product does not perform as described on this datasheet, we will offer a refund or replacement. For full details of the Abpromise,

please visit <https://www.abcam.co.jp/abpromise> or contact our technical team.

## Terms and conditions

---

- Guarantee only valid for products bought direct from Abcam or one of our authorized distributors