

Anti-COX4I2 antibody ab70112

6 References [画像数 2](#)

製品の概要

製品名	Anti-COX4I2 antibody
製品の詳細	Rabbit polyclonal to COX4I2
由来種	Rabbit
アプリケーション	適用あり: WB, ICC/IF
種交差性	交差種: Human, African green monkey
免疫原	Synthetic peptide corresponding to Human COX4I2 aa 31-80 (internal sequence). Database link: Q96KJ9
特記事項	<p>The Life Science industry has been in the grips of a reproducibility crisis for a number of years. Abcam is leading the way in addressing this with our range of recombinant monoclonal antibodies and knockout edited cell lines for gold-standard validation. Please check that this product meets your needs before purchasing.</p> <p>If you have any questions, special requirements or concerns, please send us an inquiry and/or contact our Support team ahead of purchase. Recommended alternatives for this product can be found below, along with publications, customer reviews and Q&As</p>

製品の特性

製品の状態	Liquid
保存方法	Shipped at 4°C. Store at -20°C. Stable for 12 months at -20°C.
バッファー	<p>pH: 7.40</p> <p>Preservative: 0.02% Sodium azide</p> <p>Constituents: 50% Glycerol (glycerin, glycerine), 0.87% Sodium chloride, PBS</p> <p>Without Mg²⁺ and Ca²⁺</p>
精製度	Immunogen affinity purified
特記事項 (精製)	ab70112 was affinity-purified from rabbit antiserum by affinity-chromatography using epitope-specific immunogen
ポリ/モノ	ポリクローナル
アイソタイプ	IgG

アプリケーション

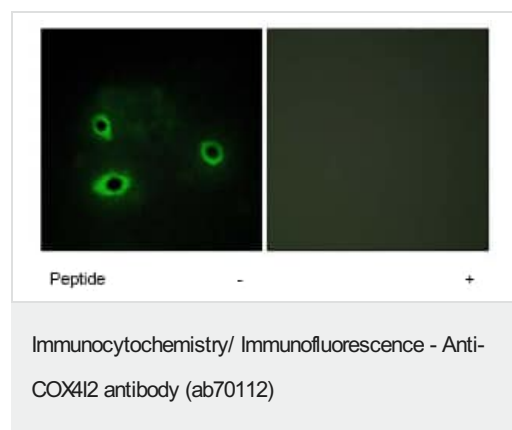
The Abpromise guarantee Abpromise保証は、 次のテスト済みアプリケーションにおけるab70112の使用に適用されます
アプリケーションノートには、推奨の開始希釈率がありますが、適切な希釈率につきましてはご検討ください。

アプリケーション	Abreviews	特記事項
WB		1/500 - 1/1000. Detects a band of approximately 20 kDa (predicted molecular weight: 20 kDa).
ICC/IF		1/500 - 1/1000.

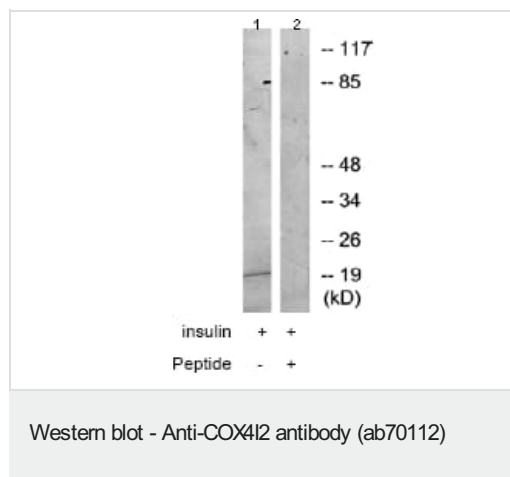
ターゲット情報

機能	This protein is one of the nuclear-coded polypeptide chains of cytochrome c oxidase, the terminal oxidase in mitochondrial electron transport.
組織特異性	Highly expressed in lung.
関連疾患	Defects in COX4I2 are the cause of exocrine pancreatic insufficiency dyserythropoietic anemia and calvarial hyperostosis (EPIDACH) [MIM:612714]. Patients present with pancreatic insufficiency, intestinal malabsorption, failure to thrive, and anemia soon after birth.
配列類似性	Belongs to the cytochrome c oxidase IV family.
細胞内局在	Mitochondrion inner membrane.

画像



ab70112 at 1/500 dilution staining COX4I2 in COS7 cells by Immunofluorescence, in the absence or presence of the immunising peptide.



All lanes : Anti-COX4I2 antibody (ab70112) at 1/500 dilution

Lane 1 : K562 cell extracts treated with insulin (0.01U/ml, 15mins)

Lane 2 : K562 cell extracts treated with insulin (0.01U/ml, 15mins) with immunising peptide at 10 µg

Lysates/proteins at 30 µg per lane.

Predicted band size: 20 kDa

Observed band size: 20 kDa

Please note: All products are "FOR RESEARCH USE ONLY. NOT FOR USE IN DIAGNOSTIC PROCEDURES"

Our Abpromise to you: Quality guaranteed and expert technical support

- Replacement or refund for products not performing as stated on the datasheet
- Valid for 12 months from date of delivery
- Response to your inquiry within 24 hours
- We provide support in Chinese, English, French, German, Japanese and Spanish
- Extensive multi-media technical resources to help you
- We investigate all quality concerns to ensure our products perform to the highest standards

If the product does not perform as described on this datasheet, we will offer a refund or replacement. For full details of the Abpromise, please visit <https://www.abcam.co.jp/abpromise> or contact our technical team.

Terms and conditions

- Guarantee only valid for products bought direct from Abcam or one of our authorized distributors