


Anti-COX4 + COX4L2 antibody [10G8D12C12] ab110261

★★★★★ **2 Abreviews** **51 References** 画像数 5

製品の概要

製品名	Anti-COX4 + COX4L2 antibody [10G8D12C12]
製品の詳細	Mouse monoclonal [10G8D12C12] to COX4 + COX4L2
由来種	Mouse
アプリケーション	適用あり: IHC-Fr, WB, Flow Cyt, ICC/IF
種交差性	交差種: Cow, Human 交差が予測される動物種: Zebrafish 
免疫原	Full length native protein (purified). This information is proprietary to Abcam and/or its suppliers.
ポジティブ・コントロール	Isolated mitochondria from Human heart, Bovine heart and HepG2 cells. Human skeletal muscle (frozen sections). Cultured Human embryonic lung derived fibroblasts (strain MRC5; fixed and permeabilized). Human colon tissue sections. HeLa cells.
特記事項	<p>This antibody clone is manufactured by Abcam. If you require a custom buffer formulation or conjugation for your experiments, please contact orders@abcam.com.</p> <p>The Life Science industry has been in the grips of a reproducibility crisis for a number of years. Abcam is leading the way in addressing this with our range of recombinant monoclonal antibodies and knockout edited cell lines for gold-standard validation. Please check that this product meets your needs before purchasing.</p> <p>If you have any questions, special requirements or concerns, please send us an inquiry and/or contact our Support team ahead of purchase. Recommended alternatives for this product can be found below, along with publications, customer reviews and Q&As</p> <p>Product was previously marketed under the MitoSciences sub-brand.</p>

製品の特性

製品の状態	Liquid
保存方法	Shipped at 4°C. Store at +4°C. Do Not Freeze.
バッファー	pH: 7.5 Preservative: 0.02% Sodium azide Constituent: HEPES buffered saline
精製度	IgG fraction
特記事項 (精製)	ab110261 was produced in vitro using hybridomas grown in serum-free medium, and then

purified by biochemical fractionation. ab110261 was judged as near homogeneity by SDS PAGE.

ポリ/モノ	モノクローナル
クローン名	10G8D12C12
アイソタイプ	IgG2a
軽鎖の種類	kappa

アプリケーション

The Abpromise guarantee **Abpromise保証は、** 次のテスト済みアプリケーションにおけるab110261の使用に適用されます
アプリケーションノートには、推奨の開始希釈率がありますが、適切な希釈率につきましてはご検討ください。

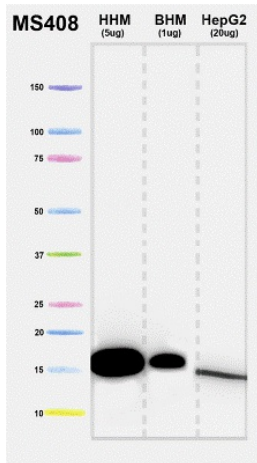
アプリケーション	Abreviews	特記事項
IHC-Fr		1/800.
WB	★★★★☆ (2)	Use a concentration of 1 µg/ml. Predicted molecular weight: 20 kDa.
Flow Cyt		Use a concentration of 1 µg/ml. ab170191 - Mouse monoclonal IgG2a, is suitable for use as an isotype control with this antibody.
ICC/IF		Use a concentration of 5 µg/ml. (heat-induced antigen-retrieval improves signal)

ターゲット情報

関連性 Cytochrome C Oxidase is located in the inner mitochondrial membrane and is the terminal enzyme complex of the mitochondrial electron transport chain. It collects electrons that are transferred from reduced cytochrome C and donates them to molecular oxygen, which is then reduced to water. It is composed of cytochrome A and cytochrome B, two copper atoms, and 13 different protein subunits, three of which are encoded by the mitochondrial DNA and ten others by nuclear DNA (mammals).

細胞内局在 Mitochondrial inner membrane

画像



Western blot - Anti-COX4 + COX4L2 antibody
[10G8D12C12] (ab110261)

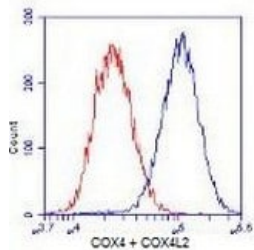
All lanes : Anti-COX4 + COX4L2 antibody [10G8D12C12]
(ab110261) at 1 µg/ml

Lane 1 : Isolated mitochondria from Human heart at 5 µg

Lane 2 : Isolated mitochondria from Bovine heart at 1 µg

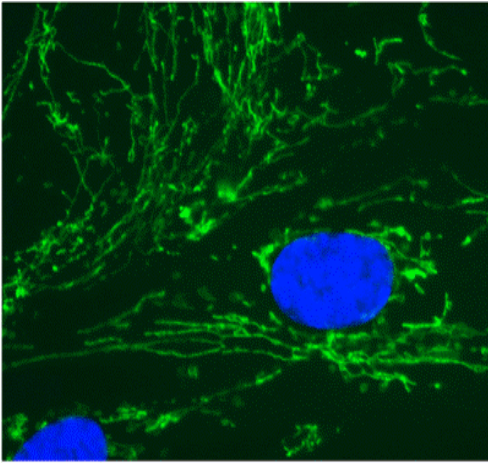
Lane 3 : Isolated mitochondria from HepG2 at 20 µg

Predicted band size: 20 kDa



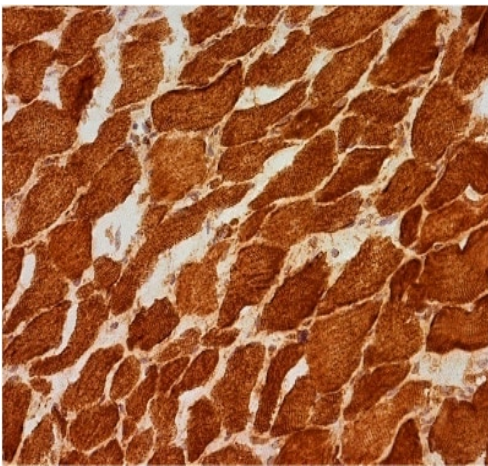
Flow Cytometry - Anti-COX4 + COX4L2 antibody
[10G8D12C12] (ab110261)

ab110261, at 1 µg/mL, staining COX4 + COX4L2 in HeLa cells by
Immunohistochemistry (blue) and an isotype control antibody, at 1
µg/mL, staining of HeLa cells (red).



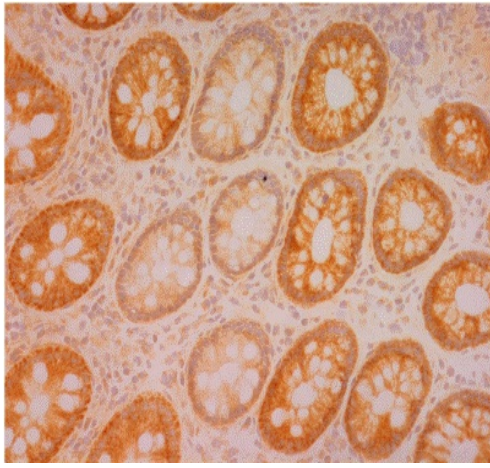
Immunocytochemistry/ Immunofluorescence - Anti-COX4 + COX4L2 antibody [10G8D12C12] (ab110261)

ab110261, at 10 µg/ml, staining COX4 + COX4L2 in cultured Human embryonic lung derived fibroblasts by Immunofluorescence. The cells (strain MRC5) were fixed, permeabilized and then labeled with ab110261 followed by an AlexaFluor® 488 conjugated Goat anti-mouse IgG2a isotype specific secondary antibody at 1 µg/ml.



Immunohistochemistry (Frozen sections) - Anti-COX4 + COX4L2 antibody [10G8D12C12] (ab110261)

ab110261, at 1/800, staining COX4 + COX4L2 in skeletal muscle tissue sections from a patient with a single large deletion of the mtDNA by Immunohistochemistry. The tissue was snap frozen and fixed in 4% PFA. Image kindly provided by Dr. J. Murphy and D. Turnbull, Mitochondrial Research Group, Newcastle University.



Immunohistochemistry (Frozen sections) - Anti-COX4 + COX4L2 antibody [10G8D12C12] (ab110261)

ab110261, at 1/200, showing COX4 + COX4L2 negative crypts in colon tissue sections from a normal ageing patient by Immunohistochemistry. The tissue was snap frozen and fixed in 4% PFA. Image kindly provided by Dr. J. Murphy and D. Turnbull, Mitochondrial Research Group, Newcastle University.

Please note: All products are "FOR RESEARCH USE ONLY. NOT FOR USE IN DIAGNOSTIC PROCEDURES"

Our Abpromise to you: Quality guaranteed and expert technical support

- Replacement or refund for products not performing as stated on the datasheet
- Valid for 12 months from date of delivery
- Response to your inquiry within 24 hours
- We provide support in Chinese, English, French, German, Japanese and Spanish
- Extensive multi-media technical resources to help you
- We investigate all quality concerns to ensure our products perform to the highest standards

If the product does not perform as described on this datasheet, we will offer a refund or replacement. For full details of the Abpromise, please visit <https://www.abcam.co.jp/abpromise> or contact our technical team.

Terms and conditions

- Guarantee only valid for products bought direct from Abcam or one of our authorized distributors