


### Anti-Cortactin (phospho Y421) antibody ab47768

★★★★★ [2 Abreviews](#) [7 References](#) [画像数 1](#)

#### 製品の概要

製品名	Anti-Cortactin (phospho Y421) antibody
製品の詳細	Rabbit polyclonal to Cortactin (phospho Y421)
由来種	Rabbit
アプリケーション	<b>適用あり:</b> ELISA, WB
種交差性	<b>交差種:</b> Human <b>交差が予測される動物種:</b> Mouse, Rat 
免疫原	Synthetic peptide corresponding to Human Cortactin aa 350-450 (phospho Y421). Database link: <a href="#">Q14247</a>
ポジティブ・コントロール	Hela cell extract.
特記事項	<p>The Life Science industry has been in the grips of a reproducibility crisis for a number of years. Abcam is leading the way in addressing this with our range of recombinant monoclonal antibodies and knockout edited cell lines for gold-standard validation. Please check that this product meets your needs before purchasing.</p> <p>If you have any questions, special requirements or concerns, please send us an inquiry and/or contact our Support team ahead of purchase. Recommended alternatives for this product can be found below, along with publications, customer reviews and Q&amp;As</p>

#### 製品の特性

製品の状態	Liquid
保存方法	Shipped at 4°C. Store at -20°C. Stable for 12 months at -20°C.
バッファー	pH: 7.40 Preservative: 0.02% Sodium azide Constituents: PBS, 50% Glycerol (glycerin, glycerine), 0.87% Sodium chloride
精製度	Without Mg+2 and Ca+2 Immunogen affinity purified
特記事項(精製)	The antibody was affinity-purified from rabbit antiserum by affinity-chromatography using epitope-specific phosphopeptide. The antibody against non-phosphopeptide was removed by chromatography using non-phosphopeptide corresponding to the phosphorylation site.
ポリ/モノ	ポリクローナル

## アプリケーション

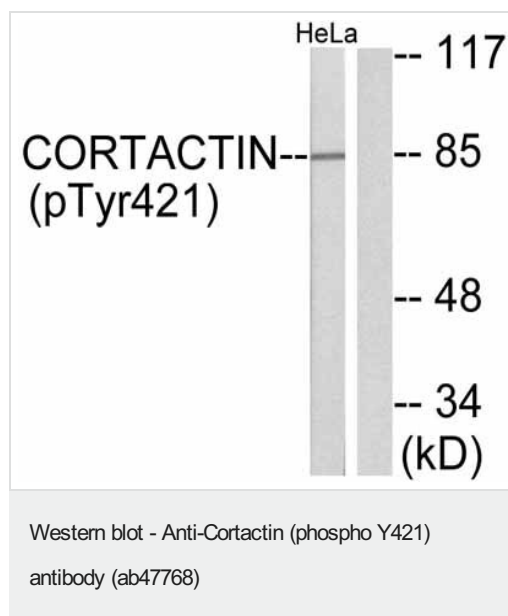
**The Abpromise guarantee** Abpromise保証は、次のテスト済みアプリケーションにおけるab47768の使用に適用されます  
アプリケーションノートには、推奨の開始希釈率がありますが、適切な希釈率につきましてはご検討ください。

アプリケーション	Abreviews	特記事項
ELISA		Use at an assay dependent concentration.
WB	★★★★★ (1)	1/500 - 1/1000. Detects a band of approximately 85 kDa (predicted molecular weight: 62 kDa).

## ターゲット情報

機能	Contributes to the organization of the actin cytoskeleton and cell structure. Plays a role in the regulation of cell migration. Plays a role in the invasiveness of cancer cells, and the formation of metastases.
配列類似性	Contains 7 cortactin repeats. Contains 1 SH3 domain.
ドメイン	The SH3 motif may mediate binding to the cytoskeleton.
翻訳後修飾	Tyrosine phosphorylation in transformed cells may contribute to cellular growth regulation and transformation.
細胞内局在	Cytoplasm > cytoskeleton. Cell projection > lamellipodium. Cell projection > ruffle. Associated with membrane ruffles and lamellipodia.

## 画像



**All lanes :** Anti-Cortactin (phospho Y421) antibody (ab47768) at 1/500 dilution

**Lane 1 :** Hela cell extract, treated with H<sub>2</sub>O<sub>2</sub>

**Lane 2 :** Hela cell extract, untreated

**Predicted band size:** 62 kDa

Typically 5-30ug of total protein was loaded per lane of the gel. The cells were treated with 150 uM H<sub>2</sub>O<sub>2</sub>.

**Please note:** All products are "FOR RESEARCH USE ONLY. NOT FOR USE IN DIAGNOSTIC PROCEDURES"

### **Our Abpromise to you: Quality guaranteed and expert technical support**

---

- Replacement or refund for products not performing as stated on the datasheet
- Valid for 12 months from date of delivery
- Response to your inquiry within 24 hours
  
- We provide support in Chinese, English, French, German, Japanese and Spanish
- Extensive multi-media technical resources to help you
- We investigate all quality concerns to ensure our products perform to the highest standards

If the product does not perform as described on this datasheet, we will offer a refund or replacement. For full details of the Abpromise, please visit <https://www.abcam.co.jp/abpromise> or contact our technical team.

### **Terms and conditions**

---

- Guarantee only valid for products bought direct from Abcam or one of our authorized distributors