

Anti-Cortactin antibody [EPR1923Y] ab68438

KO 評価済 リコンビナント RabMAb

1 References 画像数 4

製品の概要

製品名	Anti-Cortactin antibody [EPR1923Y]
製品の詳細	Rabbit monoclonal [EPR1923Y] to Cortactin
由来種	Rabbit
アプリケーション	適用あり: Flow Cyt (Intra), WB 適用なし: IHC-P or IP
種交差性	交差種: Mouse, Rat, Human
免疫原	Synthetic peptide within Human Cortactin aa 500-600 (C terminal). The exact sequence is proprietary.
ポジティブ・コントロール	C6, MCF-7, Hela and A431 cell lysate and permeabilized MCF-7 cells.
特記事項	This product is a recombinant monoclonal antibody, which offers several advantages including: <ul style="list-style-type: none">- High batch-to-batch consistency and reproducibility- Improved sensitivity and specificity- Long-term security of supply- Animal-free production For more information see here . Our RabMAb [®] technology is a patented hybridoma-based technology for making rabbit monoclonal antibodies. For details on our patents, please refer to RabMAb[®] patents .

製品の特性

製品の状態	Liquid
保存方法	Shipped at 4°C. Upon delivery aliquot and store at -20°C. Avoid freeze / thaw cycles.
バッファー	pH: 7.2 Preservative: 0.05% Sodium azide Constituents: 0.1% BSA, 40% Glycerol (glycerin, glycerine), 9.85% Tris glycine, 50% Tissue culture supernatant
精製度	Protein A purified
ポリ/モノ	モノクローナル
クローン名	EPR1923Y

アプリケーション

The Abpromise guarantee **Abpromise保証は、次のテスト済みアプリケーションにおけるab68438の使用に適用されます**

アプリケーションノートには、推奨の開始希釈率がありますが、適切な希釈率につきましてはご検討ください。

アプリケーション	Abreviews	特記事項
Flow Cyt (Intra)		
WB		

追加情報

Flow Cyt: 1/30.

ICC: 1/100 - 1/250.

WB: 1/5000. Detects bands of approximately 75 and 80 kDa (predicted molecular weight: 80 kDa).

Is unsuitable for IHC-P or IP.

Not yet tested in other applications.

Optimal dilutions/concentrations should be determined by the end user.

ターゲット情報

機能

Contributes to the organization of the actin cytoskeleton and cell structure. Plays a role in the regulation of cell migration. Plays a role in the invasiveness of cancer cells, and the formation of metastases.

配列類似性

Contains 7 cortactin repeats.

Contains 1 SH3 domain.

ドメイン

The SH3 motif may mediate binding to the cytoskeleton.

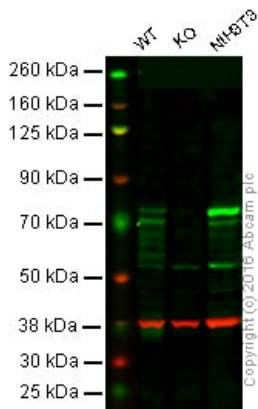
翻訳後修飾

Tyrosine phosphorylation in transformed cells may contribute to cellular growth regulation and transformation.

細胞内局在

Cytoplasm > cytoskeleton. Cell projection > lamellipodium. Cell projection > ruffle. Associated with membrane ruffles and lamellipodia.

画像



Western blot - Anti-Cortactin antibody [EPR1923Y] (ab68438)

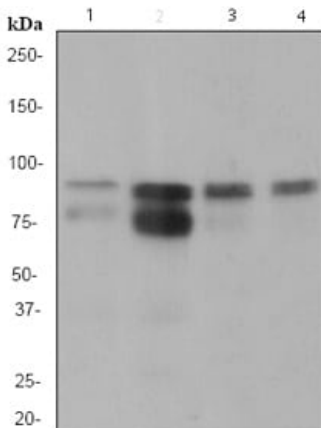
Lane 1: Wild-type HAP1 cell lysate (40 µg)

Lane 2: Cortactin knockout HAP1 cell lysate (40 µg)

Lane 3: NIH3T3 cell lysate (20 µg)

Lanes 1 - 4: Merged signal (red and green). Green - ab68438 observed at 70 kDa. Red - loading control, **ab8245**, observed at 37 kDa.

ab68438 was shown to specifically recognize Cortactin in wild-type HAP1 cells along with additional cross-reactive bands. No band was observed when Cortactin knockout samples were examined. Wild-type and Cortactin knockout samples were subjected to SDS-PAGE. Ab68438 and **ab8245** (loading control to GAPDH) were diluted at 1/1000 and 1/10,000 dilution respectively and incubated overnight at 4C. Blots were developed with Goat anti-Rabbit IgG H&L (IRDye® 800CW) preadsorbed **ab216773** and Goat anti-Mouse IgG H&L (IRDye® 680RD) preadsorbed **ab216776** secondary antibodies at 1/10,000 dilution for 1 hour at room temperature before imaging.



Western blot - Anti-Cortactin antibody [EPR1923Y] (ab68438)

All lanes : Anti-Cortactin antibody [EPR1923Y] (ab68438) at 1/5000 dilution

Lane 1 : C6 cell lysate

Lane 2 : MCF-7 cell lysate

Lane 3 : Hela cell lysate

Lane 4 : A431 cell lysate

Lysates/proteins at 10 µg per lane.

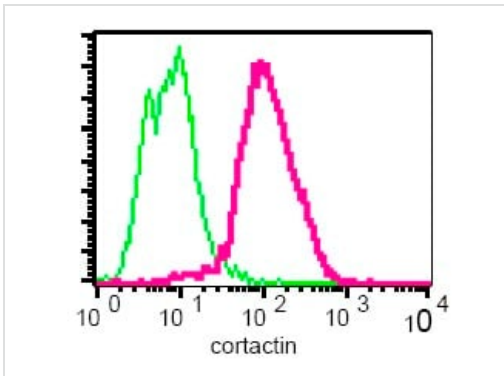
Secondary

All lanes : HRP labelled goat anti-rabbit at 1/2000 dilution

Predicted band size: 80 kDa

Observed band size: 80 kDa

Additional bands at: 75 kDa. We are unsure as to the identity of these extra bands.



Intracellular flow cytometric analysis of permeabilized MCF-7 cells using ab68438 1/30 dilution (pink) or a rabbit IgG (negative) (green).

Flow Cytometry (Intracellular) - Anti-Cortactin antibody [EPR1923Y] (ab68438)

Why choose a recombinant antibody?

 Research with confidence Consistent and reproducible results	 Long-term and scalable supply Recombinant technology
 Success from the first experiment Confirmed specificity	 Ethical standards compliant Animal-free production

Anti-Cortactin antibody [EPR1923Y] (ab68438)

Please note: All products are "FOR RESEARCH USE ONLY. NOT FOR USE IN DIAGNOSTIC PROCEDURES"

Our Abpromise to you: Quality guaranteed and expert technical support

- Replacement or refund for products not performing as stated on the datasheet
- Valid for 12 months from date of delivery
- Response to your inquiry within 24 hours
- We provide support in Chinese, English, French, German, Japanese and Spanish
- Extensive multi-media technical resources to help you
- We investigate all quality concerns to ensure our products perform to the highest standards

If the product does not perform as described on this datasheet, we will offer a refund or replacement. For full details of the Abpromise, please visit <https://www.abcam.co.jp/abpromise> or contact our technical team.

Terms and conditions

- Guarantee only valid for products bought direct from Abcam or one of our authorized distributors

