

# Anti-Coronin-7 antibody ab117446

画像数 3

### 製品の概要

---

製品名	Anti-Coronin-7 antibody
製品の詳細	Rabbit polyclonal to Coronin-7
由来種	Rabbit
アプリケーション	<b>適用あり:</b> ICC/IF, WB, IHC-P
種交差性	<b>交差種:</b> Rat
免疫原	Synthetic peptide corresponding to Human Coronin-7 (C terminal). Database link: <a href="#">NP_078811</a>

### 特記事項

The Life Science industry has been in the grips of a reproducibility crisis for a number of years. Abcam is leading the way in addressing this with our range of recombinant monoclonal antibodies and knockout edited cell lines for gold-standard validation. Please check that this product meets your needs before purchasing.

If you have any questions, special requirements or concerns, please send us an inquiry and/or contact our Support team ahead of purchase. Recommended alternatives for this product can be found below, along with publications, customer reviews and Q&As

### 製品の特性

---

製品の状態	Liquid
保存方法	Shipped at 4°C. Store at +4°C short term (1-2 weeks). Store at -20°C or -80°C. Avoid freeze / thaw cycle.
バッファー	pH: 7.2 Preservative: 0.02% Sodium azide Constituent: 99% PBS
精製度	Immunogen affinity purified
ポリ/モノ	ポリクローナル
アイソタイプ	IgG

### アプリケーション

---

The Abpromise guarantee

**Abpromise保証は、次のテスト済みアプリケーションにおけるab117446の使用に適用されます**

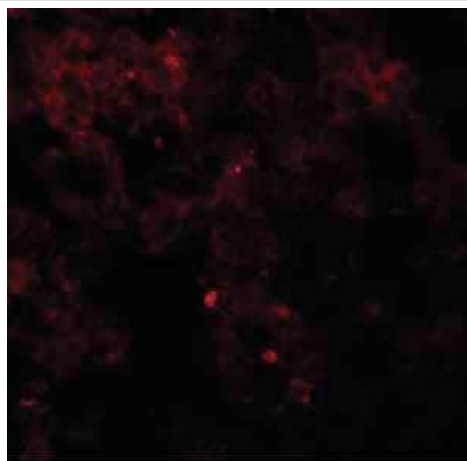
アプリケーションノートには、推奨の開始希釈率がありますが、適切な希釈率につきましてはご確認ください。

アプリケーション	Abreviews	特記事項
ICC/IF		Use a concentration of 20 µg/ml.
WB		Use a concentration of 1 - 2 µg/ml. Predicted molecular weight: 101 kDa.
IHC-P		Use at an assay dependent concentration.

## ターゲット情報

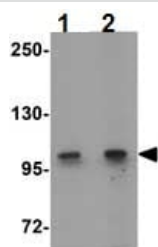
機能	May play a role in the maintenance of the Golgi apparatus morphology and in the protein export from the Golgi.
配列類似性	Belongs to the WD repeat coronin family. Contains 8 WD repeats.
翻訳後修飾	The membrane-associated form is phosphorylated on tyrosine residues.
細胞内局在	Cytoplasm > cytosol. Golgi apparatus membrane. Cytoplasmic vesicle. Predominantly cytosolic. Detected on vesicle-like cytoplasmic structures and on the cis-Golgi. Not associated with actin filaments.

## 画像



Immunofluorescence of Coronin-7 in rat lung tissue with ab117446 at 20 µg/mL.

Immunocytochemistry/ Immunofluorescence - Anti-Coronin-7 antibody (ab117446)



Western blot - Anti-Coronin-7 antibody (ab117446)

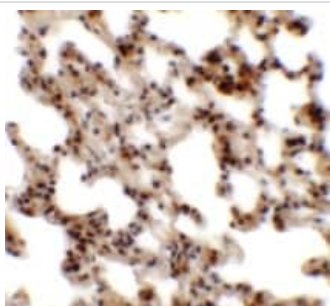
**Lane 1** : Anti-Coronin-7 antibody (ab117446) at 1 µg/ml

**Lane 2** : Anti-Coronin-7 antibody (ab117446) at 2 µg/ml

**All lanes** : Rat lung tissue lysate

Lysates/proteins at 15 µg per lane.

**Predicted band size:** 101 kDa



Immunohistochemistry (Formalin/PFA-fixed paraffin-embedded sections) - Anti-Coronin-7 antibody (ab117446)

Immunohistochemistry of Coronin-7 in rat lung tissue with ab117446 antibody at 2.5 µg/mL.

**Please note:** All products are "FOR RESEARCH USE ONLY. NOT FOR USE IN DIAGNOSTIC PROCEDURES"

### Our Abpromise to you: Quality guaranteed and expert technical support

- Replacement or refund for products not performing as stated on the datasheet
- Valid for 12 months from date of delivery
- Response to your inquiry within 24 hours
- We provide support in Chinese, English, French, German, Japanese and Spanish
- Extensive multi-media technical resources to help you
- We investigate all quality concerns to ensure our products perform to the highest standards

If the product does not perform as described on this datasheet, we will offer a refund or replacement. For full details of the Abpromise, please visit <https://www.abcam.co.jp/abpromise> or contact our technical team.

### Terms and conditions

- Guarantee only valid for products bought direct from Abcam or one of our authorized distributors