

# Anti-CORO1B antibody ab119714

**1 References** [画像数 2](#)

### 製品の概要

製品名	Anti-CORO1B antibody
製品の詳細	Rabbit polyclonal to CORO1B
由来種	Rabbit
アプリケーション	<b>適用あり:</b> WB, ICC/IF
種交差性	<b>交差種:</b> Rabbit, Human <b>交差が予測される動物種:</b> Rat 
免疫原	Synthetic peptide, coupled to carrier protein, corresponding to amino acids at the C terminus of Human CORO1B.
ポジティブ・コントロール	Human A431 and HeLa cell lysates; Mouse brain extracts and Rabbit spleen fibroblasts.
特記事項	Do not aliquot.  The Life Science industry has been in the grips of a reproducibility crisis for a number of years. Abcam is leading the way in addressing this with our range of recombinant monoclonal antibodies and knockout edited cell lines for gold-standard validation. Please check that this product meets your needs before purchasing.  If you have any questions, special requirements or concerns, please send us an inquiry and/or contact our Support team ahead of purchase. Recommended alternatives for this product can be found below, along with publications, customer reviews and Q&As

### 製品の特性

製品の状態	Liquid
保存方法	Shipped at 4°C. Store at -20°C. Stable for 12 months at -20°C.
バッファー	Preservative: 0.05% Sodium azide Constituents: 49% PBS, 50% Glycerol, 0.1% BSA
精製度	Immunogen affinity purified
特記事項 (精製)	ab119714 was affinity purified using CORO1B (C-terminus) peptide (without carrier).
ポリモノ	ポリクローナル
アイソタイプ	IgG

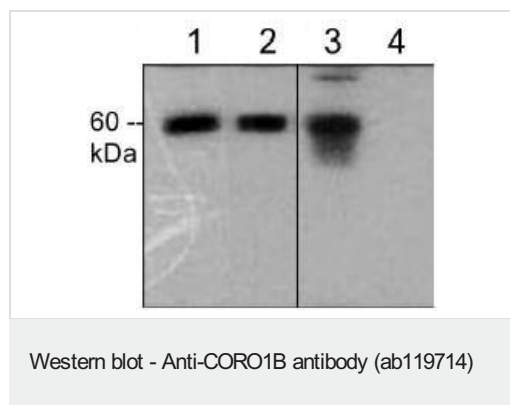
**The Abpromise guarantee** Abpromise保証は、 次のテスト済みアプリケーションにおけるab119714の使用に適用されます  
アプリケーションノートには、推奨の開始希釈率がありますが、適切な希釈率につきましてはご検討ください。

アプリケーション	Abreviews	特記事項
WB		1/1000. Predicted molecular weight: 54 kDa.
ICC/IF		1/100.

## ターゲット情報

機能	Regulates leading edge dynamics and cell motility in fibroblasts. May be involved in cytokinesis and signal transduction.
配列類似性	Belongs to the WD repeat coronin family. Contains 5 WD repeats.
翻訳後修飾	Phosphorylation by PKC on Ser-2 regulates the interaction with the Arp2/3 complex and cell motility in fibroblasts. Phosphorylation does not seem to affect subcellular location.
細胞内局在	Cytoplasm > cytoskeleton. Localized to the leading edge in fibroblasts, as well as weakly along actin stress fibers.

## 画像



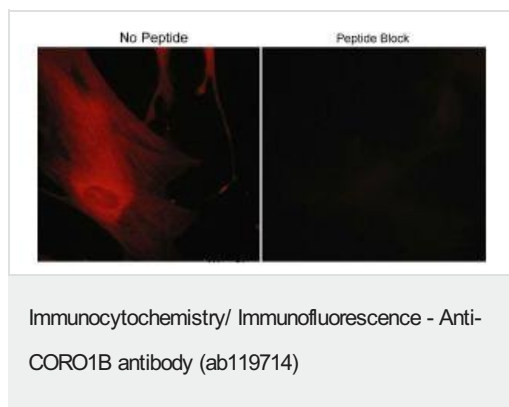
**Lanes 1-2 :** Anti-CORO1B antibody (ab119714) at 1/1000 dilution

**Lanes 3-4 :** Anti-CORO1B (phospho S2) antibody ([ab119705](#)) at 1/1000 dilution

**Lanes 1 & 3 :** Human A431 cells treated with Calyculin A (100 nM) for 30 min

**Lanes 2 & 4 :** Human A431 cells treated with Calyculin A (100 nM) for 30 min before treatment with lambda phosphatase

**Predicted band size:** 54 kDa



ab119714 at 1/100 dilution staining CORO1B in Rabbit spleen fibroblasts treated with Calyculin A in the absence (left) or presence (right) of blocking peptide. Detection used an appropriate secondary antibody conjugated to Cy3.

**Please note:** All products are "FOR RESEARCH USE ONLY. NOT FOR USE IN DIAGNOSTIC PROCEDURES"

### Our Abpromise to you: Quality guaranteed and expert technical support

- Replacement or refund for products not performing as stated on the datasheet
- Valid for 12 months from date of delivery
- Response to your inquiry within 24 hours
- We provide support in Chinese, English, French, German, Japanese and Spanish
- Extensive multi-media technical resources to help you
- We investigate all quality concerns to ensure our products perform to the highest standards

If the product does not perform as described on this datasheet, we will offer a refund or replacement. For full details of the Abpromise, please visit <https://www.abcam.co.jp/abpromise> or contact our technical team.

### Terms and conditions

- Guarantee only valid for products bought direct from Abcam or one of our authorized distributors