


# Anti-COPS3/CSN3 antibody ab12321

**2 References**   **画像数 3**

### 製品の概要

製品名	Anti-COPS3/CSN3 antibody
製品の詳細	Rabbit polyclonal to COPS3/CSN3
由来種	Rabbit
アプリケーション	<b>適用あり:</b> IHC-P, WB
種交差性	<b>交差種:</b> Human <b>交差が予測される動物種:</b> Mouse, Rat, Horse, Chicken, Guinea pig, Cow, Dog, Turkey, Xenopus laevis, Chimpanzee, Zebrafish, Rhesus monkey, Orangutan, Platypus 
免疫原	Synthetic peptide within Human COPS3/CSN3 aa 300-400. The exact immunogen sequence used to generate this antibody is proprietary information. If additional detail on the immunogen is needed to determine the suitability of the antibody for your needs, please <b>contact</b> our Scientific Support team to discuss your requirements. Database link: <a href="#">Q9UNS2</a>
ポジティブ・コントロール	HEK 293T cells.
特記事項	Centrifuge tube to remove product from lid.  The Life Science industry has been in the grips of a reproducibility crisis for a number of years. Abcam is leading the way in addressing this with our range of recombinant monoclonal antibodies and knockout edited cell lines for gold-standard validation. Please check that this product meets your needs before purchasing.  If you have any questions, special requirements or concerns, please send us an inquiry and/or contact our Support team ahead of purchase. Recommended alternatives for this product can be found below, along with publications, customer reviews and Q&As

### 製品の特性

製品の状態	Liquid
保存方法	Shipped at 4°C. Upon delivery aliquot and store at -20°C. Avoid freeze / thaw cycles.
バッファー	pH: 7 Preservative: 0.1% Sodium azide Constituents: 0.021% PBS, 1.764% Sodium citrate, 1.815% Tris
精製度	Immunogen affinity purified
特記事項 (精製)	Purified using the peptide immobilized on solid support.

ポリモノ	ポリクローナル
アイソタイプ	IgG

## アプリケーション

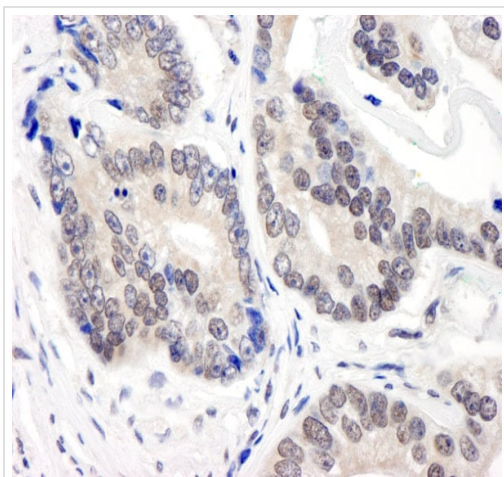
**The Abpromise guarantee**      Abpromise保証は、次のテスト済みアプリケーションにおけるab12321の使用に適用されます  
 アプリケーションノートには、推奨の開始希釈率がありますが、適切な希釈率につきましてはご検討ください。

アプリケーション	Abreviews	特記事項
IHC-P		1/500 - 1/2000. Perform heat mediated antigen retrieval with citrate buffer pH 6 before commencing with IHC staining protocol.
WB		1/5000 - 1/25000. Predicted molecular weight: 51 kDa.

## ターゲット情報

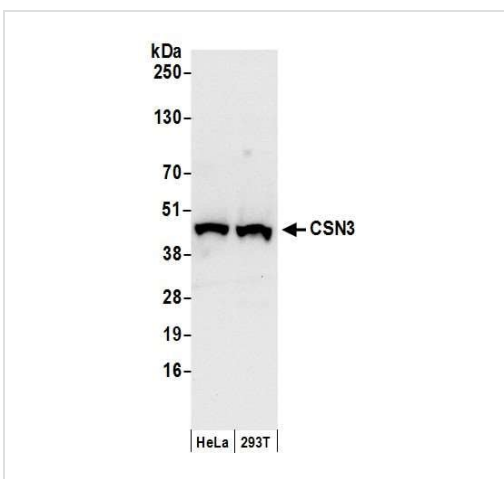
機能	Component of the COP9 signalosome complex (CSN), a complex involved in various cellular and developmental processes. The CSN complex is an essential regulator of the ubiquitin (Ubl) conjugation pathway by mediating the deneddylation of the cullin subunits of SCF-type E3 ligase complexes, leading to decrease the Ubl ligase activity of SCF-type complexes such as SCF, CSA or DDB2. The complex is also involved in phosphorylation of p53/TP53, c-jun/JUN, IκappaBα/NFκBIA, ITPK1 and IRF8/ICSBP, possibly via its association with CK2 and PKD kinases. CSN-dependent phosphorylation of TP53 and JUN promotes and protects degradation by the Ubl system, respectively.
組織特異性	Widely expressed. Expressed at high level in heart and skeletal muscle.
配列類似性	Belongs to the CSN3 family. Contains 1 PCI domain.
細胞内局在	Cytoplasm. Nucleus.

## 画像



Immunohistochemistry (Formalin/PFA-fixed paraffin-embedded sections) - Anti-COPS3/CSN3 antibody (ab12321)

Immunohistochemistry (Formalin/PFA-fixed paraffin-embedded sections) analysis of human prostate carcinoma tissue labelling COPS3/CSN3 with ab12321 at 1/1000 (1µg/ml). Detection: DAB.



Western blot - Anti-COPS3/CSN3 antibody (ab12321)

**All lanes :** Anti-COPS3/CSN3 antibody (ab12321) at 0.04 µg/ml

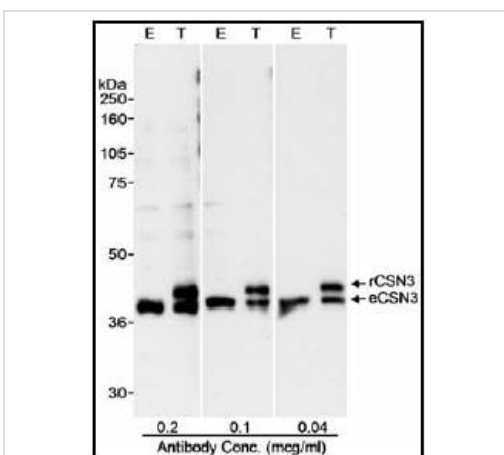
**Lane 1 :** HeLa cell lysate

**Lane 2 :** 293T cell lysate

Lysates/proteins at 50 µg per lane.

**Predicted band size:** 51 kDa

**Exposure time:** 10 seconds



Western blot - Anti-COPS3/CSN3 antibody (ab12321)

### Detection of Human CSN3 by Western Blot.

*Samples:* Whole cell lysate (50 mcg E; 25 mcg T) from HEK 293T cells that were mock transfected (E) or transfected with a CSN3 expression construct (T). *Antibody:* Affinity purified rabbit anti-CSN3 antibody BL1059 used at the indicated concentrations.

*Detection:* Chemiluminescence with a 10 second exposure.

Detection of Human CSN3 by Western Blot.

*Samples:* Whole cell lysate (50 mcg E; 25 mcg T) from HEK 293T cells that were mock transfected (E) or transfected with a CSN3 expression construct (T).

*Antibody:* Affinity purified rabbit anti-CSN3 antibody BL1059 used at the indicated concentrations.

*Detection:* Chemiluminescence with a 10 second exposure.

**Please note:** All products are "FOR RESEARCH USE ONLY. NOT FOR USE IN DIAGNOSTIC PROCEDURES"

### **Our Abpromise to you: Quality guaranteed and expert technical support**

---

- Replacement or refund for products not performing as stated on the datasheet
- Valid for 12 months from date of delivery
- Response to your inquiry within 24 hours
  
- We provide support in Chinese, English, French, German, Japanese and Spanish
- Extensive multi-media technical resources to help you
- We investigate all quality concerns to ensure our products perform to the highest standards

If the product does not perform as described on this datasheet, we will offer a refund or replacement. For full details of the Abpromise, please visit <https://www.abcam.co.jp/abpromise> or contact our technical team.

### **Terms and conditions**

---

- Guarantee only valid for products bought direct from Abcam or one of our authorized distributors