

Anti-COP1 antibody [1E4] ab56400

★★★★☆ [4 Abreviews](#) [14 References](#) [画像数 4](#)

製品の概要

製品名	Anti-COP1 antibody [1E4]
製品の詳細	Mouse monoclonal [1E4] to COP1
由来種	Mouse
アプリケーション	適用あり: WB, ICC/IF, IHC-P, Flow Cyt
種交差性	交差種: Mouse, Human
免疫原	Recombinant fragment: CLRSFKGHIN EKNFVGLASN GDYIACGSEN NSLYLYYKGL SKTLLTFKFD TVKSVLDKDR KEDDTNEFVS AVCWRALPDG ESNVLIAANS QGTIKVLELV , corresponding to amino acids 632-732 of Human COP1 Run BLAST with ExPASy Run BLAST with NCBI
ポジティブ・コントロール	This antibody gave a positive result in IHC in the following FFPE tissue: Human normal heart muscle.
特記事項	<p>This product was changed from ascites to tissue culture supernatant on 30th April 2019. Please note that the dilutions may need to be adjusted accordingly. If you have any questions, please do not hesitate to contact our scientific support team.</p> <p>The Life Science industry has been in the grips of a reproducibility crisis for a number of years. Abcam is leading the way in addressing this with our range of recombinant monoclonal antibodies and knockout edited cell lines for gold-standard validation. Please check that this product meets your needs before purchasing.</p> <p>If you have any questions, special requirements or concerns, please send us an inquiry and/or contact our Support team ahead of purchase. Recommended alternatives for this product can be found below, along with publications, customer reviews and Q&As</p>

製品の特性

製品の状態	Liquid
保存方法	Shipped at 4°C. Upon delivery aliquot and store at -20°C or -80°C. Avoid repeated freeze / thaw cycles.
バッファー	pH: 7.40 Constituent: PBS
精製度	Tissue culture supernatant
特記事項 (精製)	Purified from TCS.

ポリ/モノ	モノクローナル
クローン名	1E4
アイソタイプ	IgG2b
軽鎖の種類	kappa

アプリケーション

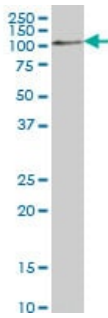
The Abpromise guarantee **Abpromise保証は、次のテスト済みアプリケーションにおけるab56400の使用に適用されず**
 アプリケーションノートには、推奨の開始希釈率がありますが、適切な希釈率につきましてはご確認ください。

アプリケーション	Abreviews	特記事項
WB	★★★★☆ (3)	Use at an assay dependent concentration. Predicted molecular weight: 80 kDa.
ICC/IF	★★★★★ (1)	Use at an assay dependent concentration.
IHC-P		Use at an assay dependent concentration.
Flow Cyt		Use at an assay dependent concentration. ab170192 - Mouse monoclonal IgG2b, is suitable for use as an isotype control with this antibody.

ターゲット情報

機能	E3 ubiquitin-protein ligase that mediates ubiquitination and subsequent proteasomal degradation of target proteins. E3 ubiquitin ligases accept ubiquitin from an E2 ubiquitin-conjugating enzyme in the form of a thioester and then directly transfers the ubiquitin to targeted substrates. Involved in JUN ubiquitination and degradation. Directly involved in p53 (TP53) ubiquitination and degradation, thereby abolishing p53-dependent transcription and apoptosis. Ubiquitinates p53 independently of MDM2 or RCHY1. Probably mediates E3 ubiquitin ligase activity by functioning as the essential RING domain subunit of larger E3 complexes. In contrast, it does not constitute the catalytic RING subunit in the DCX DET1-COP1 complex that negatively regulates JUN, the ubiquitin ligase activity being mediated by RBX1.
組織特異性	Ubiquitously expressed at low level. Expressed at higher level in testis, placenta, skeletal muscle and heart.
パスウェイ	Protein modification; protein ubiquitination.
配列類似性	Belongs to the COP1 family. Contains 1 RING-type zinc finger. Contains 7 WD repeats.
ドメイン	The RING finger domain, in addition to its role in ubiquitination, functions as a structural scaffold to bring two clusters of positive-charged residues within spatial proximity to mimic a bipartite nuclear localization signal (NLS).
細胞内局在	Nucleus speckle. Cytoplasm. In the nucleus, it forms nuclear speckles.

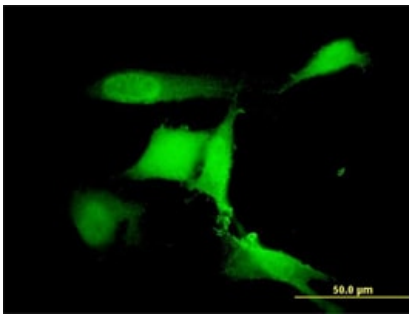
画像



Western blot - Anti-COP1 antibody [1E4] (ab56400)

COP1 antibody (ab56400) at 1 ug/lane + NIH/3T3 cell lysate at 25ug/lane.

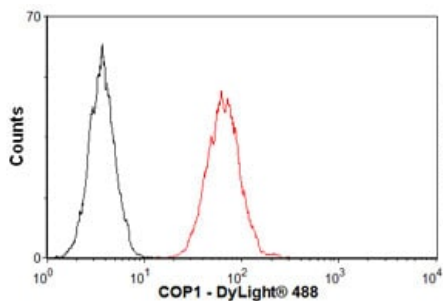
This image was generated using the ascites version of the product.



Immunocytochemistry/ Immunofluorescence - Anti-COP1 antibody [1E4] (ab56400)

Immunofluorescence of ab56400 on NIH/3T3 cell [antibody concentration 10 ug/ml].

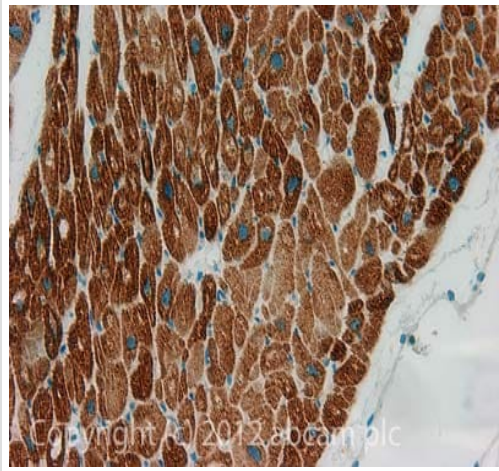
This image was generated using the ascites version of the product.



Flow Cytometry - Anti-COP1 antibody [1E4] (ab56400)

Overlay histogram showing NIH3T3 cells stained with ab56400 (red line). The cells were fixed with 80% methanol (5 min) and then permeabilized with 0.1% PBS-Tween for 20 min. The cells were then incubated in 1x PBS / 10% normal goat serum / 0.3M glycine to block non-specific protein-protein interactions. The cells were then incubated with the antibody (ab56400, 1 μg/1x10⁶ cells) for 30 min at 22°C. The secondary antibody used was DyLight® 488 goat anti-mouse IgG (H+L) (**ab96879**) at 1/500 dilution for 30 min at 22°C. Isotype control antibody (black line) was mouse IgG2b [PLPV219] (**ab91366**, 2 μg/1x10⁶ cells) used under the same conditions. Acquisition of >5,000 events was performed.

This image was generated using the ascites version of the product.



Immunohistochemistry (Formalin/PFA-fixed paraffin-embedded sections) - Anti-COP1 antibody [1E4] (ab56400)

IHC image of COP1 staining in Human normal heart muscle formalin fixed paraffin embedded tissue section, performed on a Leica Bond™ system using the standard protocol F. The section was pre-treated using heat mediated antigen retrieval with sodium citrate buffer (pH6, epitope retrieval solution 1) for 20 mins. The section was then incubated with ab56400, 5µg/ml, for 15 mins at room temperature and detected using an HRP conjugated compact polymer system. DAB was used as the chromogen. The section was then counterstained with haematoxylin and mounted with DPX.

For other IHC staining systems (automated and non-automated) customers should optimize variable parameters such as antigen retrieval conditions, primary antibody concentration and antibody incubation times.

This image was generated using the ascites version of the product.

Please note: All products are "FOR RESEARCH USE ONLY. NOT FOR USE IN DIAGNOSTIC PROCEDURES"

Our Abpromise to you: Quality guaranteed and expert technical support

- Replacement or refund for products not performing as stated on the datasheet
- Valid for 12 months from date of delivery
- Response to your inquiry within 24 hours
- We provide support in Chinese, English, French, German, Japanese and Spanish
- Extensive multi-media technical resources to help you
- We investigate all quality concerns to ensure our products perform to the highest standards

If the product does not perform as described on this datasheet, we will offer a refund or replacement. For full details of the Abpromise, please visit <https://www.abcam.co.jp/abpromise> or contact our technical team.

Terms and conditions

- Guarantee only valid for products bought direct from Abcam or one of our authorized distributors