


Anti-Contactin 1 antibody ab66265

★★★★☆ [2 Abreviews](#) [5 References](#) [画像数 1](#)

製品の概要

製品名	Anti-Contactin 1 antibody
製品の詳細	Rabbit polyclonal to Contactin 1
由来種	Rabbit
アプリケーション	適用あり: WB 適用なし: ICC/IF
種交差性	交差種: Mouse, Rat, Human 交差が予測される動物種: Cow, Pig 
免疫原	Synthetic peptide conjugated to KLH derived from within residues 250 - 350 of Mouse Contactin 1. Immunogenの所有権に関して (Peptide available as ab74597 .)
ポジティブ・コントロール	WB: Human, Mouse and Rat Brain Tissue Lysates.
特記事項	<p>The Life Science industry has been in the grips of a reproducibility crisis for a number of years. Abcam is leading the way in addressing this with our range of recombinant monoclonal antibodies and knockout edited cell lines for gold-standard validation. Please check that this product meets your needs before purchasing.</p> <p>If you have any questions, special requirements or concerns, please send us an inquiry and/or contact our Support team ahead of purchase. Recommended alternatives for this product can be found below, along with publications, customer reviews and Q&As</p>

製品の特性

製品の状態	Liquid
保存方法	Shipped at 4°C. Store at +4°C short term (1-2 weeks). Upon delivery aliquot. Store at -20°C or -80°C. Avoid freeze / thaw cycle.
バッファー	pH: 7.40 Preservative: 0.02% Sodium azide Constituent: PBS
精製度	Batches of this product that have a concentration < 1mg/ml may have BSA added as a stabilising agent. If you would like information about the formulation of a specific lot, please contact our scientific support team who will be happy to help. Immunogen affinity purified

ポリモノ
アイソタイプ

ポリクローナル
IgG

アプリケーション

The Abpromise guarantee **Abpromise保証は、次のテスト済みアプリケーションにおけるab66265の使用に適用されず**
アプリケーションノートには、推奨の開始希釈率がありますが、適切な希釈率につきましてはご検討ください。

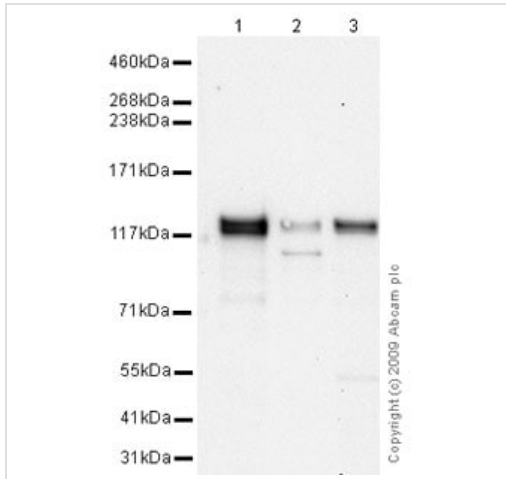
アプリケーション	Abreviews	特記事項
WB	★★★★☆ (2)	Use a concentration of 1 µg/ml. Detects a band of approximately 120 kDa (predicted molecular weight: 113 kDa).

追加情報 Is unsuitable for ICC/IF.

ターゲット情報

機能	Contactins mediate cell surface interactions during nervous system development. Involved in the formation of paranodal axo-glia junctions in myelinated peripheral nerves and in the signaling between axons and myelinating glial cells via its association with CNTNAP1. Participates in oligodendrocytes generation by acting as a ligand of NOTCH1. Its association with NOTCH1 promotes NOTCH1 activation through the released notch intracellular domain (NICD) and subsequent translocation to the nucleus. Interaction with TNR induces a repulsion of neurons and an inhibition of neurite outgrowth.
組織特異性	Strongly expressed in brain and in neuroblastoma and retinoblastoma cell lines. Lower levels of expression in lung, pancreas, kidney and skeletal muscle.
関連疾患	Defects in CNTN1 are the cause of Compton-North congenital myopathy (CNCM) [MIM:612540]. CNCM is a familial lethal form of congenital onset muscle weakness, inherited in an autosomal-recessive fashion and characterized by a secondary loss of beta2-syntrophin and alpha-dystrobrevin from the muscle sarcolemma, central nervous system involvement, and fetal akinesia.
配列類似性	Belongs to the immunoglobulin superfamily. Contactin family. Contains 4 fibronectin type-III domains. Contains 6 Ig-like C2-type (immunoglobulin-like) domains.
細胞内局在	Cell membrane.

画像



Western blot - Anti-Contactin 1 antibody (ab66265)

All lanes : Anti-Contactin 1 antibody (ab66265) at 1 µg/ml

Lane 1 : Human brain tissue lysate - total protein ([ab29466](#))

Lane 2 : Brain (Mouse) Tissue Lysate

Lane 3 : Brain (Rat) Tissue Lysate

Lysates/proteins at 10 µg per lane.

Secondary

All lanes : Goat polyclonal to Rabbit IgG - H&L - Pre-Adsorbed (HRP) at 1/3000 dilution

Performed under reducing conditions.

Predicted band size: 113 kDa

Observed band size: 120 kDa

Exposure time: 8 minutes

Contactin 1 contains a number of potential glycosylation sites (SwissProt) which may explain its migration at a higher molecular weight than predicted.

Please note: All products are "FOR RESEARCH USE ONLY. NOT FOR USE IN DIAGNOSTIC PROCEDURES"

Our Abpromise to you: Quality guaranteed and expert technical support

- Replacement or refund for products not performing as stated on the datasheet
- Valid for 12 months from date of delivery
- Response to your inquiry within 24 hours
- We provide support in Chinese, English, French, German, Japanese and Spanish
- Extensive multi-media technical resources to help you
- We investigate all quality concerns to ensure our products perform to the highest standards

If the product does not perform as described on this datasheet, we will offer a refund or replacement. For full details of the Abpromise, please visit <https://www.abcam.co.jp/abpromise> or contact our technical team.

Terms and conditions

- Guarantee only valid for products bought direct from Abcam or one of our authorized distributors