


Anti-Connexin 43 / GJA1 antibody ab117843

★★★★★ [3 Abreviews](#) [2 References](#) [画像数 3](#)

製品の概要

| | |
|----------|---|
| 製品名 | Anti-Connexin 43 / GJA1 antibody |
| 製品の詳細 | Rabbit polyclonal to Connexin 43 / GJA1 |
| 由来種 | Rabbit |
| アプリケーション | 適用あり: IHC-P, WB |
| 種交差性 | 交差種: Mouse, Rat 交差が予測される動物種: Chicken  |
| 免疫原 | Synthetic peptide. This information is proprietary to Abcam and/or its suppliers. |
| 特記事項 | <p>The Life Science industry has been in the grips of a reproducibility crisis for a number of years. Abcam is leading the way in addressing this with our range of recombinant monoclonal antibodies and knockout edited cell lines for gold-standard validation. Please check that this product meets your needs before purchasing.</p> <p>If you have any questions, special requirements or concerns, please send us an inquiry and/or contact our Support team ahead of purchase. Recommended alternatives for this product can be found below, along with publications, customer reviews and Q&As</p> |

製品の特性

| | |
|--------|--|
| 製品の状態 | Liquid |
| 保存方法 | Shipped at 4°C. Store at +4°C short term (1-2 weeks). Upon delivery aliquot. Store at -20°C or -80°C. Avoid freeze / thaw cycle. |
| バッファー | pH: 7.40 Preservative: 0.02% Sodium azide Constituent: PBS |
| 精製度 | Immunogen affinity purified |
| ポリ/モノ | ポリクローナル |
| アイソタイプ | IgG |

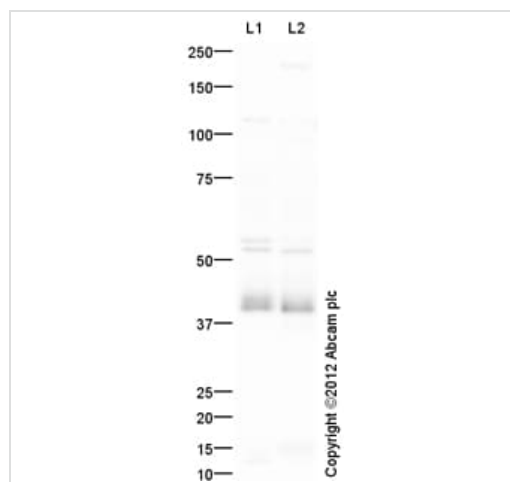
アプリケーション

The Abpromise guarantee **Abpromise保証は、次のテスト済みアプリケーションにおけるab117843の使用に適用されます**
アプリケーションノートには、推奨の開始希釈率がありますが、適切な希釈率につきましてはご確認ください。

| アプリケーション | Abreviews | 特記事項 |
|----------|-----------|--|
| IHC-P | ★★★★★ (1) | Use a concentration of 1 µg/ml. Perform heat mediated antigen retrieval with citrate buffer pH 6 before commencing with IHC staining protocol. |
| WB | ★★★★☆ (1) | Use a concentration of 1 µg/ml. Detects a band of approximately 43 kDa (predicted molecular weight: 43 kDa). |

ターゲット情報

| | |
|-------|--|
| 機能 | One gap junction consists of a cluster of closely packed pairs of transmembrane channels, the connexons, through which materials of low MW diffuse from one cell to a neighboring cell. May play a critical role in the physiology of hearing by participating in the recycling of potassium to the cochlear endolymph. |
| 組織特異性 | Expressed in the heart and fetal cochlea. |
| 関連疾患 | <p>Defects in GJA1 are the cause of autosomal dominant oculodentodigital dysplasia (ODDD) [MIM:164200]; also known as oculodentoosseous dysplasia. ODDD is a highly penetrant syndrome presenting with craniofacial (ocular, nasal, dental) and limb dysmorphisms, spastic paraplegia, and neurodegeneration. Craniofacial anomalies typically include a thin nose with hypoplastic alae nasi, small anteverted nares, prominent columnella, and microcephaly. Brittle nails and hair abnormalities of hypotrichosis and slow growth are present. Ocular defects include microphthalmia, microcornea, cataracts, glaucoma, and optic atrophy. Syndactyly type 3 and conductive deafness can occur in some cases. Cardiac abnormalities are observed in rare instances.</p> <p>Defects in GJA1 are the cause of autosomal recessive oculodentodigital dysplasia (ODDD autosomal recessive) [MIM:257850].</p> <p>Defects in GJA1 may be the cause of syndactyly type 3 (SDTY3) [MIM:186100]. Syndactyly is an autosomal dominant trait and is the most common congenital anomaly of the hand or foot. It is marked by persistence of the webbing between adjacent digits, so they are more or less completely attached. In this type there is usually complete and bilateral syndactyly between the fourth and fifth fingers. Usually it is soft tissue syndactyly but occasionally the distal phalanges are fused. The fifth finger is short with absent or rudimentary middle phalanx. The feet are not affected.</p> <p>Defects in GJA1 are a cause of hypoplastic left heart syndrome (HLHS) [MIM:241550]. HLHS refers to the abnormal development of the left-sided cardiac structures, resulting in obstruction to blood flow from the left ventricular outflow tract. In addition, the syndrome includes underdevelopment of the left ventricle, aorta, and aortic arch, as well as mitral atresia or stenosis.</p> <p>Defects in GJA1 are a cause of Hallermann-Streiff syndrome (HSS) [MIM:234100]. HSS is a disorder characterized by a typical skull shape (brachycephaly with frontal bossing), hypotrichosis, microphthalmia, cataracts, beaked nose, micrognathia, skin atrophy, dental anomalies and proportionate short stature. Mental retardation is present in a minority of cases.</p> |
| 配列類似性 | Belongs to the connexin family. Alpha-type (group II) subfamily. |
| 細胞内局在 | Cell membrane. Cell junction > gap junction. |



Western blot - Anti-Connexin 43 / GJA1 antibody (ab117843)

All lanes : Anti-Connexin 43 / GJA1 antibody (ab117843) at 1 µg/ml

Lane 1 : Heart (Mouse) Tissue Lysate

Lane 2 : Heart (Rat) Tissue Lysate

Lysates/proteins at 10 µg per lane.

Secondary

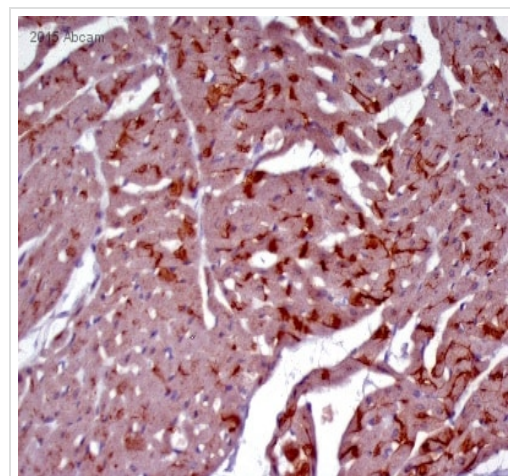
All lanes : Goat Anti-Rabbit IgG H&L (HRP) preadsorbed ([ab97080](#)) at 1/5000 dilution

Developed using the ECL technique.

Performed under reducing conditions.

Predicted band size: 43 kDa

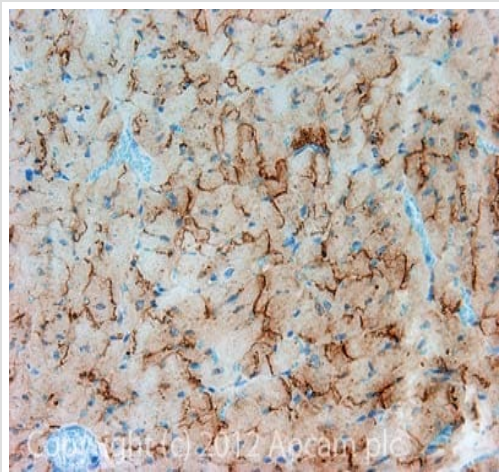
Exposure time: 1 minute



Immunohistochemistry (Formalin/PFA-fixed paraffin-embedded sections) - Anti-Connexin 43 / GJA1 antibody (ab117843)

Image is courtesy of an Abreview submitted by Dr Helder Fonseca.

Immunohistochemical analysis of PFA-fixed paraffin-embedded rat cardiac tissue sections, labelling Connexin 43 with ab117843 at a dilution of 1/500 incubated for 12 hours at 4°C in 1% BSA in TBS. Antigen retrieval was via Tris-EDTA pH 9.0 (heat mediated). Blocking was 3% BSA incubated for 1 hour at 37°C. The secondary was [ab6721](#) at 1/500.



Immunohistochemistry (Formalin/PFA-fixed paraffin-embedded sections) - Anti-Connexin 43 / GJA1 antibody (ab117843)

IHC image of Connexin 43 / GJA1 staining in Mouse normal heart formalin fixed paraffin embedded tissue section, performed on a Leica Bond™ system using the standard protocol B. The section was pre-treated using heat mediated antigen retrieval with sodium citrate buffer (pH6, epitope retrieval solution 1) for 20 mins. The section was then incubated with ab117843, 1µg/ml, for 15 mins at room temperature. A Goat anti-Rabbit biotinylated secondary antibody was used to detect the primary, and visualized using an HRP conjugated ABC system. DAB was used as the chromogen. The section was then counterstained with haematoxylin and mounted with DPX.

For other IHC staining systems (automated and non-automated) customers should optimize variable parameters such as antigen retrieval conditions, primary antibody concentration and antibody incubation times.

Please note: All products are "FOR RESEARCH USE ONLY. NOT FOR USE IN DIAGNOSTIC PROCEDURES"

Our Abpromise to you: Quality guaranteed and expert technical support

- Replacement or refund for products not performing as stated on the datasheet
- Valid for 12 months from date of delivery
- Response to your inquiry within 24 hours
- We provide support in Chinese, English, French, German, Japanese and Spanish
- Extensive multi-media technical resources to help you
- We investigate all quality concerns to ensure our products perform to the highest standards

If the product does not perform as described on this datasheet, we will offer a refund or replacement. For full details of the Abpromise, please visit <https://www.abcam.co.jp/abpromise> or contact our technical team.

Terms and conditions

- Guarantee only valid for products bought direct from Abcam or one of our authorized distributors