

Anti-Collagen X antibody ab58632

★★★★★ [9 Abreviews](#) [227 References](#) [画像数 1](#)

製品の概要

製品名	Anti-Collagen X antibody
製品の詳細	Rabbit polyclonal to Collagen X
由来種	Rabbit
特異性	ab58632 recognizes type X collagen. Exhibits slight cross-reactivity with fibronectin and type II and type IX collagen. Does not cross-react with type I, type III, or type XI collagen.
アプリケーション	適用あり: WB
種交差性	交差種: Human
免疫原	Full length native protein (purified) Type X collagen from rat chondrosarcoma cells
特記事項	<p>The Life Science industry has been in the grips of a reproducibility crisis for a number of years. Abcam is leading the way in addressing this with our range of recombinant monoclonal antibodies and knockout edited cell lines for gold-standard validation. Please check that this product meets your needs before purchasing.</p> <p>If you have any questions, special requirements or concerns, please send us an inquiry and/or contact our Support team ahead of purchase. Recommended alternatives for this product can be found below, along with publications, customer reviews and Q&As</p>

製品の特性

製品の状態	Liquid
保存方法	Shipped at 4°C. Store at +4°C short term (1-2 weeks). Upon delivery aliquot. Store at -20°C long term. Avoid freeze / thaw cycle.
バッファー	Constituent: Whole serum
精製度	Whole antiserum
ポリ/モノ	ポリクローナル
アイソタイプ	IgG

アプリケーション

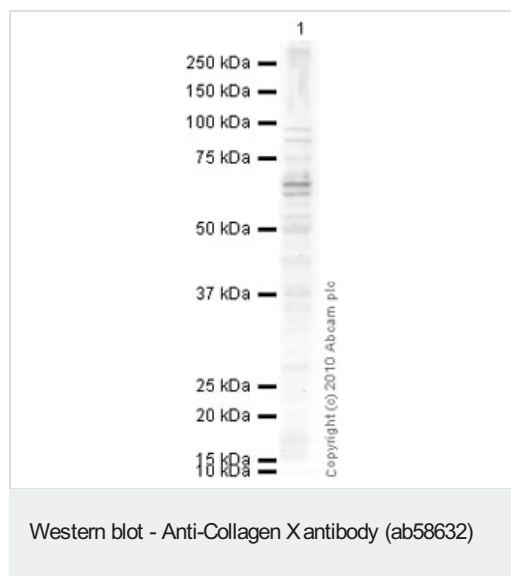
The Abpromise guarantee **Abpromise保証は、**次のテスト済みアプリケーションにおけるab58632の使用に適用されます
アプリケーションノートには、推奨の開始希釈率がありますが、適切な希釈率につきましてはご検討ください。

アプリケーション	Abreviews	特記事項
WB		1/100 - 1/300.

ターゲット情報

機能	Type X collagen is a product of hypertrophic chondrocytes and has been localized to presumptive mineralization zones of hyaline cartilage.
関連疾患	Defects in COL10A1 are the cause of Schmid type metaphyseal chondrodysplasia (SMCD) [MIM:156500]. SMCD is a dominantly inherited disorder of the osseous skeleton. The cardinal features of the phenotype are mild short stature, coxa vara and a waddling gait. Radiography usually shows sclerosis of the ribs, flaring of the metaphyses, and a wide irregular growth plate, especially of the knees. A variant form of SMCD is spondylometaphyseal dysplasia Japanese type. It is characterized by spinal involvement comprising mild platyspondyly, vertebral body abnormalities, and end-plate irregularity.
配列類似性	Contains 1 C1q domain.
翻訳後修飾	Prolines at the third position of the tripeptide repeating unit (G-X-Y) are hydroxylated in some or all of the chains.
細胞内局在	Secreted > extracellular space > extracellular matrix.

画像



Anti-Collagen X antibody (ab58632) at 1/500 dilution + HT 1080 (Human fibrosarcoma) Whole Cell Lysate at 10 µg

Secondary

Goat Anti-Rabbit IgG H&L (HRP) preadsorbed ([ab97080](#)) at 1/5000 dilution

Developed using the ECL technique.

Performed under reducing conditions.

Observed band size: 64,66 kDa

Additional bands at: 37 kDa, 50 kDa, 98 kDa. We are unsure as to the identity of these extra bands.

Exposure time: 150 seconds

The band observed at 64 kDa could potentially be a cleaved form of Collagen X due to the presence of a 18 amino acid signal peptide.

Please note: All products are "FOR RESEARCH USE ONLY. NOT FOR USE IN DIAGNOSTIC PROCEDURES"

Our Abpromise to you: Quality guaranteed and expert technical support

- Replacement or refund for products not performing as stated on the datasheet
- Valid for 12 months from date of delivery
- Response to your inquiry within 24 hours
- We provide support in Chinese, English, French, German, Japanese and Spanish
- Extensive multi-media technical resources to help you
- We investigate all quality concerns to ensure our products perform to the highest standards

If the product does not perform as described on this datasheet, we will offer a refund or replacement. For full details of the Abpromise, please visit <https://www.abcam.co.jp/abpromise> or contact our technical team.

Terms and conditions

- Guarantee only valid for products bought direct from Abcam or one of our authorized distributors