



# Anti-COL22A1 antibody ab121846

★★★★★ [4 Abreviews](#) [4 References](#) [画像数 5](#)

### 製品の概要

製品名	Anti-COL22A1 antibody
製品の詳細	Rabbit polyclonal to COL22A1
由来種	Rabbit
アプリケーション	<b>適用あり:</b> ICC, IHC-P
種交差性	<b>交差種:</b> Human
免疫原	Recombinant fragment within Human COL22A1 aa 150-300. The exact immunogen sequence used to generate this antibody is proprietary information. If additional detail on the immunogen is needed to determine the suitability of the antibody for your needs, please <b><a href="#">contact</a></b> our Scientific Support team to discuss your requirements. Database link: <a href="#">Q8NFW1</a>
	 <a href="#">Run BLAST with</a>  <a href="#">Run BLAST with</a>
ポジティブ・コントロール	IHC-P: Human stomach and small intestine tissues; ICC: Human cell line U-2 OS.
特記事項	<p>The Life Science industry has been in the grips of a reproducibility crisis for a number of years. Abcam is leading the way in addressing this with our range of recombinant monoclonal antibodies and knockout edited cell lines for gold-standard validation. Please check that this product meets your needs before purchasing.</p> <p>If you have any questions, special requirements or concerns, please send us an inquiry and/or contact our Support team ahead of purchase. Recommended alternatives for this product can be found below, along with publications, customer reviews and Q&amp;As</p>

### 製品の特性

製品の状態	Liquid
保存方法	Shipped at 4°C. Upon delivery aliquot and store at -20°C. Avoid freeze / thaw cycles.
バッファー	pH: 7.20 Preservative: 0.02% Sodium azide Constituents: 40% Glycerol (glycerin, glycerine), 59% PBS
精製度	Immunogen affinity purified
ポリ/モノ	ポリクローナル
アイソタイプ	IgG

## アプリケーション

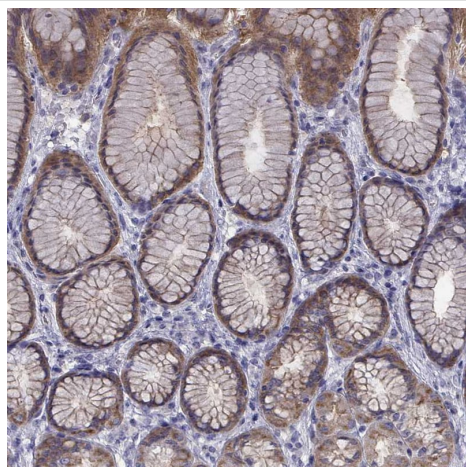
**The Abpromise guarantee** Abpromise保証は、次のテスト済みアプリケーションにおけるab121846の使用に適用されます  
アプリケーションノートには、推奨の開始希釈率がありますが、適切な希釈率につきましてはご検討ください。

アプリケーション	Abreviews	特記事項
ICC		Use a concentration of 0.25 - 2 µg/ml.
IHC-P	★★★★★ (3)	1/200 - 1/500. Perform heat mediated antigen retrieval with citrate buffer pH 6 before commencing with IHC staining protocol.

## ターゲット情報

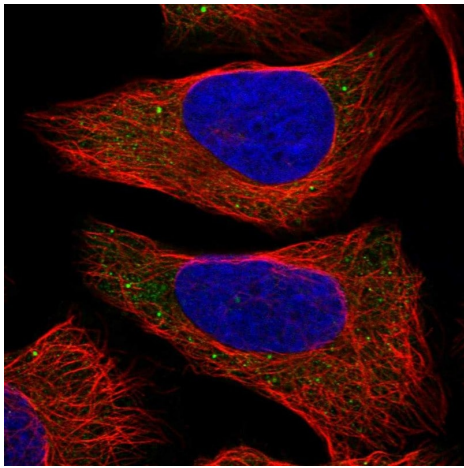
機能	Acts as a cell adhesion ligand for skin epithelial cells and fibroblasts.
組織特異性	Restrictive expression is observed at tissue junctions such as the myotendinous junction in skeletal and heart muscle, the articular cartilage-synovial fluid junction, or the border between the anagen hair follicle and the dermis in the skin. It is deposited in the basement membrane zone of the myotendinous junction and the hair follicle and associated with the extrafibrillar matrix in cartilage.
配列類似性	Belongs to the fibril-associated collagens with interrupted helices (FACIT) family. Contains 16 collagen-like domains. Contains 1 TSP N-terminal (TSPN) domain. Contains 1 VWFA domain.
細胞内局在	Secreted > extracellular space > extracellular matrix. Cytoplasm.

## 画像



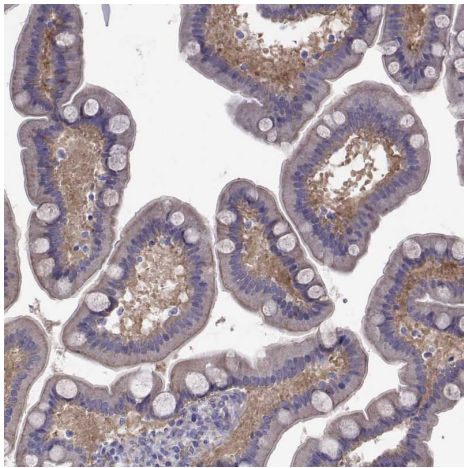
Immunohistochemistry (Formalin/PFA-fixed paraffin-embedded sections) analysis of human stomach tissue labelling COL22A1 with ab121846 at 1/200 dilution. Heat mediated antigen retrieval performed with citrate buffer pH 6 before commencing with IHC staining protocol.

Immunohistochemistry (Formalin/PFA-fixed paraffin-embedded sections) - Anti-COL22A1 antibody (ab121846)



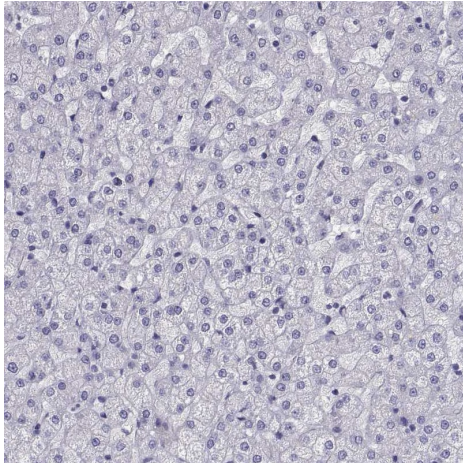
Immunocytochemistry analysis of human cell line U-2 OS cells  
labelling COL22A1 with ab121846 at 2 µg/mL

Immunocytochemistry - Anti-COL22A1 antibody  
(ab121846)



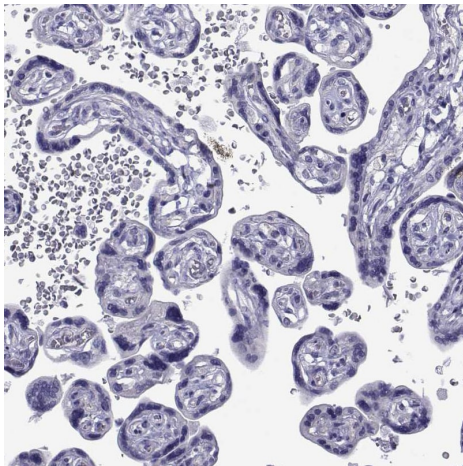
Immunohistochemistry (Formalin/PFA-fixed paraffin-embedded  
sections) analysis of human small intestine tissue labelling  
COL22A1 with ab121846 at 1/200 dilution. Heat mediated antigen  
retrieval performed with citrate buffer pH 6 before commencing with  
IHC staining protocol.

Immunohistochemistry (Formalin/PFA-fixed paraffin-  
embedded sections) - Anti-COL22A1 antibody  
(ab121846)



Immunohistochemistry (Formalin/PFA-fixed paraffin-embedded sections) - Anti-COL22A1 antibody (ab121846)

Immunohistochemistry (Formalin/PFA-fixed paraffin-embedded sections) analysis of human liver tissue labelling COL22A1 with ab121846 at 1/200 dilution. Heat mediated antigen retrieval performed with citrate buffer pH 6 before commencing with IHC staining protocol.



Immunohistochemistry (Formalin/PFA-fixed paraffin-embedded sections) - Anti-COL22A1 antibody (ab121846)

Immunohistochemistry (Formalin/PFA-fixed paraffin-embedded sections) analysis of human placenta tissue labelling COL22A1 with ab121846 at 1/200 dilution. Heat mediated antigen retrieval performed with citrate buffer pH 6 before commencing with IHC staining protocol.

**Please note:** All products are "FOR RESEARCH USE ONLY. NOT FOR USE IN DIAGNOSTIC PROCEDURES"

### Our Abpromise to you: Quality guaranteed and expert technical support

- Replacement or refund for products not performing as stated on the datasheet
- Valid for 12 months from date of delivery
- Response to your inquiry within 24 hours
- We provide support in Chinese, English, French, German, Japanese and Spanish
- Extensive multi-media technical resources to help you
- We investigate all quality concerns to ensure our products perform to the highest standards

If the product does not perform as described on this datasheet, we will offer a refund or replacement. For full details of the Abpromise,

please visit <https://www.abcam.co.jp/abpromise> or contact our technical team.

## **Terms and conditions**

---

- Guarantee only valid for products bought direct from Abcam or one of our authorized distributors