

### Anti-Coilin antibody [Pdelta] ab11822

★★★★★ [1 Abreviews](#) [39 References](#) [画像数 1](#)

#### 製品の概要

製品名	Anti-Coilin antibody [Pdelta]
製品の詳細	Mouse monoclonal [Pdelta] to Coilin
由来種	Mouse
アプリケーション	<b>適用あり:</b> WB, ICC/IF
種交差性	<b>交差種:</b> Mouse, Human
免疫原	Recombinant fragment corresponding to Human Coilin (C terminal).
エピトープ	Monoclonal Anti-coilin reacts with an epitope located between amino acids 363 and 481 of human coilin.
ポジティブ・コントロール	HeLa nuclear extract.
特記事項	<p>The Life Science industry has been in the grips of a reproducibility crisis for a number of years. Abcam is leading the way in addressing this with our range of recombinant monoclonal antibodies and knockout edited cell lines for gold-standard validation. Please check that this product meets your needs before purchasing.</p> <p>If you have any questions, special requirements or concerns, please send us an inquiry and/or contact our Support team ahead of purchase. Recommended alternatives for this product can be found below, along with publications, customer reviews and Q&amp;As</p>

#### 製品の特性

製品の状態	Liquid
保存方法	Shipped at 4°C. Upon delivery aliquot and store at -20°C. Avoid freeze / thaw cycles.
バッファー	<p>pH: 7.40</p> <p>Preservative: 0.097% Sodium azide</p> <p>Constituent: 0.0268% PBS</p>
精製度	Protein A purified
ポリ/モノ	モノクローナル
クローン名	Pdelta
アイソタイプ	IgG1

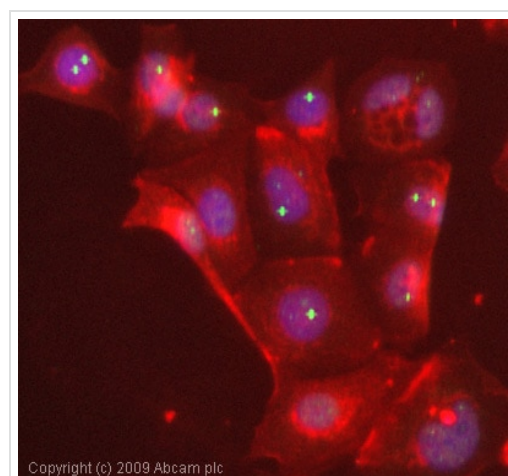
**The Abpromise guarantee** Abpromise保証は、 次のテスト済みアプリケーションにおけるab11822の使用に適用されます  
アプリケーションノートには、推奨の開始希釈率がありますが、適切な希釈率につきましてはご検討ください。

アプリケーション	Abreviews	特記事項
WB		Use at an assay dependent concentration.
ICC/IF	★★★★★ (1)	Use a concentration of 1 µg/ml.

## ターゲット情報

機能	Is a component of the nuclear coiled bodies (CBS) which are involved in the function or assembly/disassembly of nucleoplasmic snRNPs. During mitosis, CBS disassemble, coinciding with a mitotic-specific phosphorylation of p80 coilin.
組織特異性	Found in all the cell types examined.
配列類似性	Belongs to the coilin family.
細胞内局在	Nucleus. Nuclear coiled body located in the interchromatin space between the nucleolus and the nucleus.

## 画像



Copyright (c) 2009 Abcam plc

Immunocytochemistry/ Immunofluorescence - Anti-Coilin antibody [Pdelta] (ab11822)

ICC/IF image of ab11822 stained MCF-7 cells. The cells were 4% formaldehyde fixed (10 min) and then incubated in 1%BSA / 10% normal goat serum / 0.3M glycine in 0.1% PBS-Tween for 1h to permeabilise the cells and block non-specific protein-protein interactions. The cells were then incubated with the antibody (ab11822, 1µg/ml) overnight at +4°C. The secondary antibody (green) was Alexa Fluor® 488 goat anti-mouse IgG (H+L) used at a 1/1000 dilution for 1h. Alexa Fluor® 594 WGA was used to label plasma membranes (red) at a 1/200 dilution for 1h. DAPI was used to stain the cell nuclei (blue) at a concentration of 1.43µM.

**Please note:** All products are "FOR RESEARCH USE ONLY. NOT FOR USE IN DIAGNOSTIC PROCEDURES"

## Our Abpromise to you: Quality guaranteed and expert technical support

- Replacement or refund for products not performing as stated on the datasheet
- Valid for 12 months from date of delivery

- Response to your inquiry within 24 hours
- We provide support in Chinese, English, French, German, Japanese and Spanish
- Extensive multi-media technical resources to help you
- We investigate all quality concerns to ensure our products perform to the highest standards

If the product does not perform as described on this datasheet, we will offer a refund or replacement. For full details of the Abpromise, please visit <https://www.abcam.co.jp/abpromise> or contact our technical team.

#### **Terms and conditions**

---

- Guarantee only valid for products bought direct from Abcam or one of our authorized distributors