

Anti-Cofilin antibody ab29038

3 References [画像数 1](#)

製品の概要

製品名	Anti-Cofilin antibody
製品の詳細	Rabbit polyclonal to Cofilin
由来種	Rabbit
特異性	ab29038 recognises Cofilin 1. The immunogen sequence has only 3 amino acid differences from human Cofilin 2.
アプリケーション	適用あり: WB
種交差性	交差種: Human
免疫原	A synthetic peptide (conjugated to KLH) corresponding to amino acid residues at the N terminus of human Cofilin 1.
特記事項	<p>The Life Science industry has been in the grips of a reproducibility crisis for a number of years. Abcam is leading the way in addressing this with our range of recombinant monoclonal antibodies and knockout edited cell lines for gold-standard validation. Please check that this product meets your needs before purchasing.</p> <p>If you have any questions, special requirements or concerns, please send us an inquiry and/or contact our Support team ahead of purchase. Recommended alternatives for this product can be found below, along with publications, customer reviews and Q&As</p>

製品の特性

製品の状態	Liquid
保存方法	Shipped at 4°C. Upon delivery aliquot and store at -20°C. Avoid freeze / thaw cycles.
バッファー	Preservative: 0.05% Sodium azide Constituents: PBS, 50% Glycerol, 0.1% BSA
精製度	Immunogen affinity purified
ポリ/モノ	ポリクローナル
アイソタイプ	IgG

アプリケーション

The Abpromise guarantee

Abpromise保証は、 次のテスト済みアプリケーションにおけるab29038の使用に適用されます

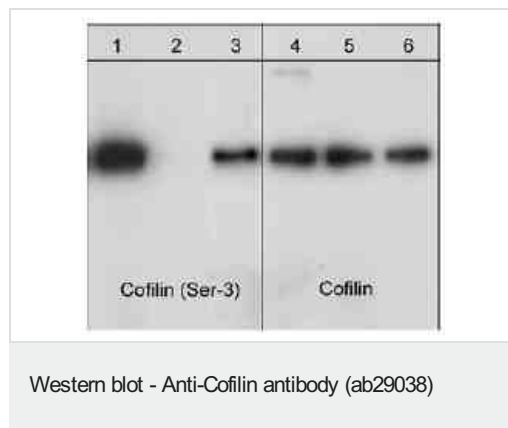
アプリケーションノートには、推奨の開始希釈率がありますが、適切な希釈率につきましてはご確認ください。

アプリケーション	Abreviews	特記事項
WB		1/1000. Predicted molecular weight: 18 kDa.

ターゲット情報

機能	Controls reversibly actin polymerization and depolymerization in a pH-sensitive manner. It has the ability to bind G- and F-actin in a 1:1 ratio of cofilin to actin. It is the major component of intranuclear and cytoplasmic actin rods.
組織特異性	Widely distributed in various tissues.
配列類似性	Belongs to the actin-binding proteins ADF family. Contains 1 ADF-H domain.
翻訳後修飾	Phosphorylated on Ser-3 in resting cells.
細胞内局在	Nucleus matrix. Cytoplasm > cytoskeleton. Almost completely in nucleus in cells exposed to heat shock or 10% dimethyl sulfoxide.

画像



Western blot of jurkat cells expressing cofilin 1. Blots were treated with (lanes 2, 3, 5 & 6) or without (lanes 1 & 4) lambda phosphatase for 1 hr at 37 degrees C. In lanes 3 & 6, phosphatase treatments were performed in the presence of phospho-cofilin 1 (Ser-3) peptide. Blots were probed with anti-phospho-Cofilin 1 (Ser-3) (lanes 1-3;) or anti-Cofilin 1 (lanes 4-6; ab29038). Phosphatase treatment removes Ser-3 phosphorylation of Cofilin, but this phosphatase activity is reduced in the presence of peptide.

Please note: All products are "FOR RESEARCH USE ONLY. NOT FOR USE IN DIAGNOSTIC PROCEDURES"

Our Abpromise to you: Quality guaranteed and expert technical support

- Replacement or refund for products not performing as stated on the datasheet
- Valid for 12 months from date of delivery
- Response to your inquiry within 24 hours
- We provide support in Chinese, English, French, German, Japanese and Spanish
- Extensive multi-media technical resources to help you
- We investigate all quality concerns to ensure our products perform to the highest standards

If the product does not perform as described on this datasheet, we will offer a refund or replacement. For full details of the Abpromise, please visit <https://www.abcam.co.jp/abpromise> or contact our technical team.

Terms and conditions

- Guarantee only valid for products bought direct from Abcam or one of our authorized distributors