


### Anti-Coatomer subunit delta/COPD antibody ab96725

★★★★★ 1 Abreviews 4 References 画像数 5

医薬用外劇物

#### 製品の概要

製品名	Anti-Coatomer subunit delta/COPD antibody
製品の詳細	Rabbit polyclonal to Coatomer subunit delta/COPD
由来種	Rabbit
アプリケーション	<b>適用あり:</b> WB, ICC/IF, IHC-P, IHC-Fr
種交差性	<b>交差種:</b> Mouse, Human <b>交差が予測される動物種:</b> Rat 
免疫原	Recombinant fragment corresponding to Human Coatomer subunit delta/COPD aa 89-492. Database link: <a href="#">NP_001646</a>
ポジティブ・コントロール	WB: 293T, A431, H1299, HeLaS3, HepG2 and Raji cell lysates. ICC/IF: HeLa cells. IHC-P: Mouse brain tissue. IHC-Fr: Mouse cerebellum tissue.
特記事項	<p>The Life Science industry has been in the grips of a reproducibility crisis for a number of years. Abcam is leading the way in addressing this with our range of recombinant monoclonal antibodies and knockout edited cell lines for gold-standard validation. Please check that this product meets your needs before purchasing.</p> <p>If you have any questions, special requirements or concerns, please send us an inquiry and/or contact our Support team ahead of purchase. Recommended alternatives for this product can be found below, along with publications, customer reviews and Q&amp;As</p>

#### 製品の特性

製品の状態	Liquid
保存方法	Shipped at 4°C. Upon delivery aliquot and store at -20°C or -80°C. Avoid repeated freeze / thaw cycles.
バッファー	pH: 7.00 Preservative: 0.01% Thimerosal (merthiolate) Constituents: 1.21% Tris, 0.75% Glycine, 20% Glycerol (glycerin, glycerine)
精製度	Immunogen affinity purified
ポリモノ	ポリクローナル
アイソタイプ	IgG

## アプリケーション

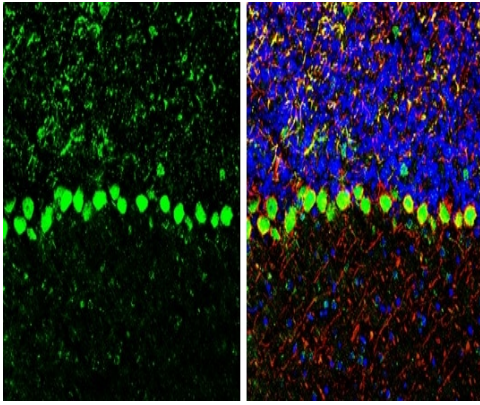
**The Abpromise guarantee**      **Abpromise保証は、**次のテスト済みアプリケーションにおけるab96725の使用に適用されます  
アプリケーションノートには、推奨の開始希釈率がありますが、適切な希釈率につきましてはご確認ください。

アプリケーション	Abreviews	特記事項
WB	★★★★★ (1)	1/500 - 1/3000. Predicted molecular weight: 58 kDa.
ICC/IF		1/100 - 1/500.
IHC-P		1/100 - 1/1000. Perform heat mediated antigen retrieval with citrate buffer pH 6 before commencing with IHC staining protocol.
IHC-Fr		1/100 - 1/1000. Antigen Retrieval: Citrate buffer, pH 6.0, 10 min.

## ターゲット情報

機能	The coatomer is a cytosolic protein complex that binds to dilysine motifs and reversibly associates with Golgi non-clathrin-coated vesicles, which further mediate biosynthetic protein transport from the ER, via the Golgi up to the trans Golgi network. Coatomer complex is required for budding from Golgi membranes, and is essential for the retrograde Golgi-to-ER transport of dilysine-tagged proteins. In mammals, the coatomer can only be recruited by membranes associated to ADP-ribosylation factors (ARFs), which are small GTP-binding proteins; the complex also influences the Golgi structural integrity, as well as the processing, activity, and endocytic recycling of LDL receptors.
組織特異性	Ubiquitously expressed.
配列類似性	Belongs to the adaptor complexes medium subunit family. Delta-COP subfamily. Contains 1 MHD (mu homology) domain.
細胞内局在	Cytoplasm. Golgi apparatus membrane. Cytoplasmic vesicle > COPI-coated vesicle membrane. The coatomer is cytoplasmic or polymerized on the cytoplasmic side of the Golgi, as well as on the vesicles/buds originating from it.

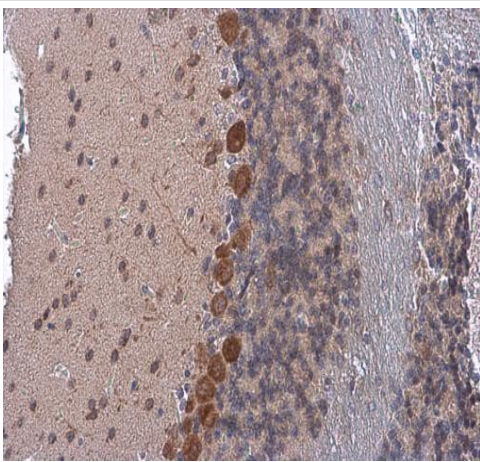
## 画像



Immunohistochemistry (Frozen sections) - Anti-Coatomer subunit delta/COPD antibody (ab96725)

Frozen section of mouse cerebellum tissue stained for Coatomer subunit delta/COPD using ab96725 at 1/250 dilution (green). The nuclear counter stain is DAPI (blue). NF-H is detected with an anti NF-H antibody (red).

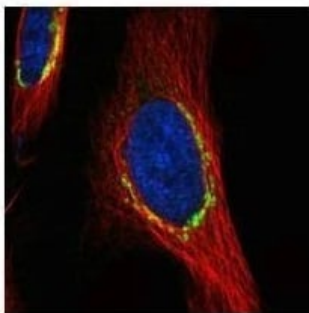
Antigen Retrieval: Citrate buffer, pH 6.0, 10 min.



Immunohistochemistry (Formalin/PFA-fixed paraffin-embedded sections) - Anti-Coatomer subunit delta/COPD antibody (ab96725)

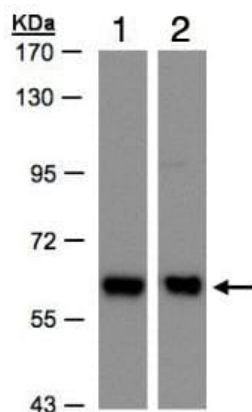
Paraffin-embedded mouse brain tissue stained for Coatomer subunit delta/COPD using ab96725 at 1/500 dilution in immunohistochemical analysis.

Antigen Retrieval: Citrate buffer, pH 6.0, 10 min.



Immunocytochemistry/ Immunofluorescence - Anti-Coatomer subunit delta/COPD antibody (ab96725)

Paraformaldehyde-fixed HeLa cells stained for Coatomer subunit delta/COPD using ab96725 at 1/500 dilution (green) in ICC/IF. Alpha tubulin filaments are detected with an anti-tubulin antibody (red).



Western blot - Anti-Coatomer subunit delta/COPD antibody (ab96725)

**All lanes :** Anti-Coatomer subunit delta/COPD antibody (ab96725)  
at 1/500 dilution

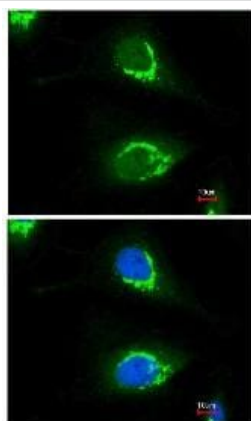
**Lane 1 :** H1299 whole cell lysate

**Lane 2 :** HepG2 whole cell lysate

Lysates/proteins at 30 µg per lane.

**Predicted band size:** 58 kDa

7.5% SDS PAGE



Immunocytochemistry/ Immunofluorescence - Anti-Coatomer subunit delta/COPD antibody (ab96725)

Immunofluorescence analysis of paraformaldehyde-fixed HeLa cells, using ab96725 at 1/200 dilution. Lower image merged with DNA probe.

**Please note:** All products are "FOR RESEARCH USE ONLY. NOT FOR USE IN DIAGNOSTIC PROCEDURES"

### Our Abpromise to you: Quality guaranteed and expert technical support

- Replacement or refund for products not performing as stated on the datasheet
- Valid for 12 months from date of delivery
- Response to your inquiry within 24 hours
- We provide support in Chinese, English, French, German, Japanese and Spanish
- Extensive multi-media technical resources to help you
- We investigate all quality concerns to ensure our products perform to the highest standards

If the product does not perform as described on this datasheet, we will offer a refund or replacement. For full details of the Abpromise,

please visit <https://www.abcam.co.jp/abpromise> or contact our technical team.

#### **Terms and conditions**

---

- Guarantee only valid for products bought direct from Abcam or one of our authorized distributors