

Anti-CNTLN antibody ab122356

画像数 3

製品の概要

製品名	Anti-CNTLN antibody
製品の詳細	Rabbit polyclonal to CNTLN
由来種	Rabbit
アプリケーション	適用あり: IHC-P, WB, ICC/IF
種交差性	交差種: Human
免疫原	Recombinant fragment corresponding to Human CNTLN aa 289-379. Sequence: LIEARKEVEVVSQSKYNALSLQLSNKQTELIQKMDITLVRKE LQELQNLV KQNSTHTAQAELIQQLQVLNMDTQKVLNRNQEDVHTAESIS Run BLAST with Run BLAST with
ポジティブ・コントロール	Human liver tissue; Human liver lysate; Human cell line U-251 MG
特記事項	The Life Science industry has been in the grips of a reproducibility crisis for a number of years. Abcam is leading the way in addressing this with our range of recombinant monoclonal antibodies and knockout edited cell lines for gold-standard validation. Please check that this product meets your needs before purchasing. If you have any questions, special requirements or concerns, please send us an inquiry and/or contact our Support team ahead of purchase. Recommended alternatives for this product can be found below, along with publications, customer reviews and Q&As

製品の特性

製品の状態	Liquid
保存方法	Shipped at 4°C. Upon delivery aliquot and store at -20°C. Avoid freeze / thaw cycles.
バッファー	pH: 7.20 Preservative: 0.02% Sodium azide Constituents: 40% Glycerol (glycerin, glycerine), 59% PBS
精製度	Immunogen affinity purified
ポリ/モノ	ポリクローナル
アイソタイプ	IgG

アプリケーション

The Abpromise guarantee **Abpromise保証は、次のテスト済みアプリケーションにおけるab122356の使用に適用されます**
アプリケーションノートには、推奨の開始希釈率がありますが、適切な希釈率につきましてはご確認ください。

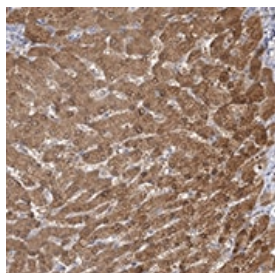
アプリケーション	Abreviews	特記事項
IHC-P		1/50 - 1/200. Perform heat mediated antigen retrieval with citrate buffer pH 6 before commencing with IHC staining protocol.
WB		Use a concentration of 0.04 - 0.4 µg/ml.
ICC/IF		Use a concentration of 1 - 4 µg/ml. Fixation/Permeabilization: PFA/Triton X-100.

ターゲット情報

細胞内局在

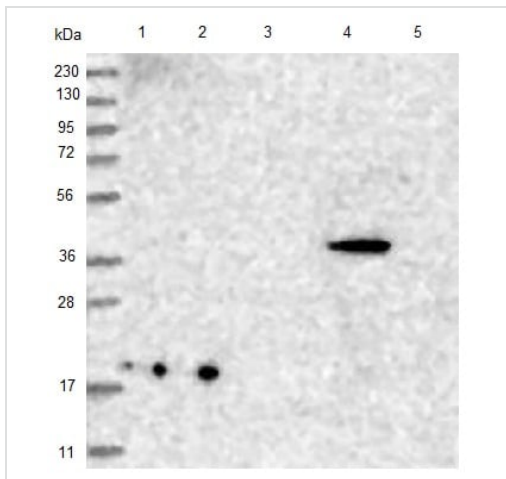
Cytoplasm > cytoskeleton > centrosome > centriole. Colocalizes with gamma-tubulin during interphase and mitosis. Appears to associated with the mother centriole during G1 phase and with daughter centrioles towards G1/S phase.

画像



ab122356, at 1/60 dilution, staining CNTLN in paraffin-embedded Human liver tissue by Immunohistochemistry.

Immunohistochemistry (Formalin/PFA-fixed paraffin-embedded sections) - Anti-CNTLN antibody (ab122356)



Western blot - Anti-CNTLN antibody (ab122356)

All lanes : Anti-CNTLN antibody (ab122356) at 1/250 dilution

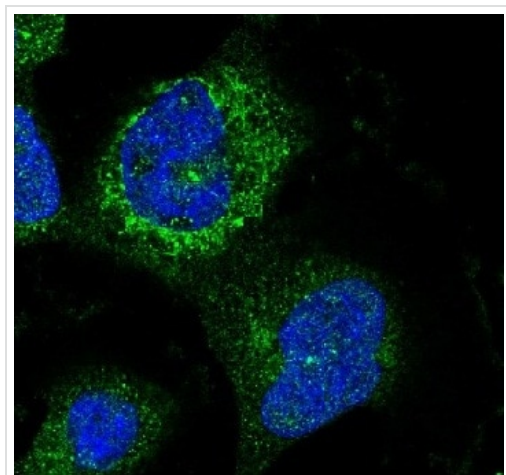
Lane 1 : RT-4 cell lysate

Lane 2 : U-251 MG cell lysate

Lane 3 : Human plasma lysate

Lane 4 : Human liver lysate

Lane 5 : Human tonsil lysate



Immunocytochemistry/ Immunofluorescence - Anti-CNTLN antibody (ab122356)

ab122356, at 4 µg/ml, staining CNTLN in Human cell line U-251 MG by Immunofluorescence. Antibody staining is shown in green.

Please note: All products are "FOR RESEARCH USE ONLY. NOT FOR USE IN DIAGNOSTIC PROCEDURES"

Our Abpromise to you: Quality guaranteed and expert technical support

- Replacement or refund for products not performing as stated on the datasheet
- Valid for 12 months from date of delivery
- Response to your inquiry within 24 hours
- We provide support in Chinese, English, French, German, Japanese and Spanish
- Extensive multi-media technical resources to help you
- We investigate all quality concerns to ensure our products perform to the highest standards

If the product does not perform as described on this datasheet, we will offer a refund or replacement. For full details of the Abpromise, please visit <https://www.abcam.co.jp/abpromise> or contact our technical team.

Terms and conditions

- Guarantee only valid for products bought direct from Abcam or one of our authorized distributors