

Anti-CNTFR antibody [MM0190-10L29] ab89333

★★★★★ [1 Abreviews](#) [3 References](#) [画像数 2](#)

製品の概要

製品名	Anti-CNTFR antibody [MM0190-10L29]
製品の詳細	Mouse monoclonal [MM0190-10L29] to CNTFR
由来種	Mouse
アプリケーション	適用あり: Flow Cyt, IHC-P
種交差性	交差種: Human
免疫原	Recombinant full length protein corresponding to Human CNTFR.
特記事項	<p>The Life Science industry has been in the grips of a reproducibility crisis for a number of years. Abcam is leading the way in addressing this with our range of recombinant monoclonal antibodies and knockout edited cell lines for gold-standard validation. Please check that this product meets your needs before purchasing.</p> <p>If you have any questions, special requirements or concerns, please send us an inquiry and/or contact our Support team ahead of purchase. Recommended alternatives for this product can be found below, along with publications, customer reviews and Q&As</p>

製品の特性

製品の状態	Liquid
保存方法	Shipped at 4°C. Upon delivery aliquot and store at -20°C or -80°C. Avoid repeated freeze / thaw cycles.
バッファー	Constituent: PBS
精製度	Protein G purified
ポリ/モノ	モノクローナル
クローン名	MM0190-10L29
アイソタイプ	IgG2

アプリケーション

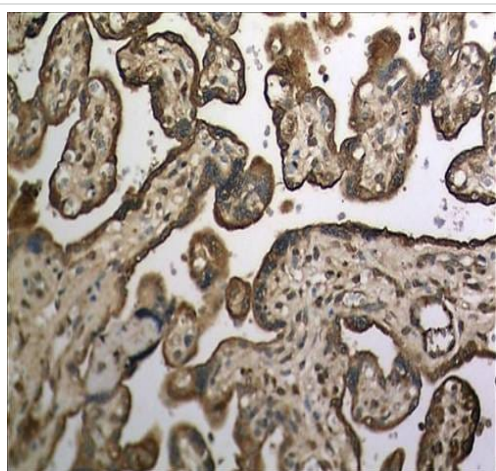
The Abpromise guarantee **Abpromise保証は、**次のテスト済みアプリケーションにおけるab89333の使用に適用されます
 アプリケーションノートには、推奨の開始希釈率がありますが、適切な希釈率につきましてはご検討ください。

アプリケーション	Abreviews	特記事項
Flow Cyt		Use 0.5µg for 10 ⁶ cells. ab18414 - Mouse monoclonal IgG2a, is suitable for use as an isotype control with this antibody.
IHC-P	★★★★★ (1)	Use a concentration of 15 µg/ml.

ターゲット情報

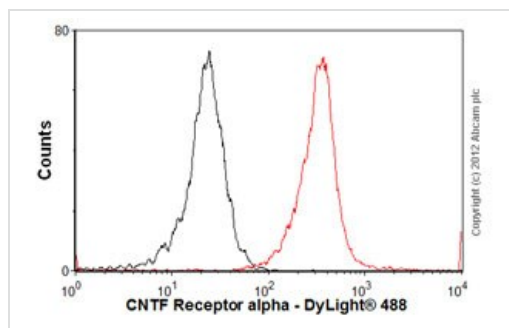
機能	Binds to CNTF. The alpha subunit provides the receptor specificity.
組織特異性	Nervous system and skeletal muscle.
配列類似性	Belongs to the type I cytokine receptor family. Type 3 subfamily. Contains 2 fibronectin type-III domains. Contains 1 Ig-like C2-type (immunoglobulin-like) domain.
ドメイン	The WSXWS motif appears to be necessary for proper protein folding and thereby efficient intracellular transport and cell-surface receptor binding.
細胞内局在	Cell membrane.

画像



Immunohistochemistry (Formalin/PFA-fixed paraffin-embedded sections) analysis of human placental tissue section (4µm) labelling CNTFR with ab89333. Tissue was treated with 15µg/ml Proteinase K for antigen retrieval and fixed with 4% PFA. A HRP-conjugated anti-mouse IgG was used as the secondary antibody (30 minutes at room temperature) followed by DAB color development.

Immunohistochemistry (Formalin/PFA-fixed paraffin-embedded sections) - Anti-CNTFR antibody
[MM0190-10L29] (ab89333)



Flow Cytometry - Anti-CNTFR antibody [MM0190-10L29] (ab89333)

Overlay histogram showing SH-SY5Y cells stained with ab89333 (red line). The cells were fixed with 80% methanol (5 min) and incubated in 1x PBS / 10% normal goat serum / 0.3M glycine to block non-specific protein-protein interactions. The cells were then incubated with the antibody (ab89333, 0.5µg/1x10⁶ cells) for 30 min at 22°C. The secondary antibody used was DyLight® 488 goat anti-mouse IgG (H+L) (**ab96879**) at 1/500 dilution for 30 min at 22°C. Isotype control antibody (black line) was mouse IgG2 (1µg/1x10⁶ cells) used under the same conditions. Acquisition of >5,000 events was performed.

Please note that Abcam do not have any data for use of this antibody on non-fixed cells. We welcome any customer feedback.

Please note: All products are "FOR RESEARCH USE ONLY. NOT FOR USE IN DIAGNOSTIC PROCEDURES"

Our Abpromise to you: Quality guaranteed and expert technical support

- Replacement or refund for products not performing as stated on the datasheet
- Valid for 12 months from date of delivery
- Response to your inquiry within 24 hours
- We provide support in Chinese, English, French, German, Japanese and Spanish
- Extensive multi-media technical resources to help you
- We investigate all quality concerns to ensure our products perform to the highest standards

If the product does not perform as described on this datasheet, we will offer a refund or replacement. For full details of the Abpromise, please visit <https://www.abcam.co.jp/abpromise> or contact our technical team.

Terms and conditions

- Guarantee only valid for products bought direct from Abcam or one of our authorized distributors