

Anti-CMKLR1 antibody ab64881

★★★★★ [1 Abreviews](#) [14 References](#) [画像数 1](#)

製品の概要

製品名	Anti-CMKLR1 antibody
製品の詳細	Rabbit polyclonal to CMKLR1
由来種	Rabbit
アプリケーション	適用あり: WB
種交差性	交差種: Human
免疫原	Synthetic peptide from an internal sequence of Human CMKLR1.
特記事項	<p>The Life Science industry has been in the grips of a reproducibility crisis for a number of years. Abcam is leading the way in addressing this with our range of recombinant monoclonal antibodies and knockout edited cell lines for gold-standard validation. Please check that this product meets your needs before purchasing.</p> <p>If you have any questions, special requirements or concerns, please send us an inquiry and/or contact our Support team ahead of purchase. Recommended alternatives for this product can be found below, along with publications, customer reviews and Q&As</p>

製品の特性

製品の状態	Liquid
保存方法	Shipped at 4°C. Store at -20°C. Stable for 12 months at -20°C.
バッファー	pH: 7.40 Preservative: 0.02% Sodium azide Constituents: PBS, 50% Glycerol (glycerin, glycerine), 0.87% Sodium chloride
精製度	Immunogen affinity purified
ポリ/モノ	ポリクローナル
アイソタイプ	IgG

アプリケーション

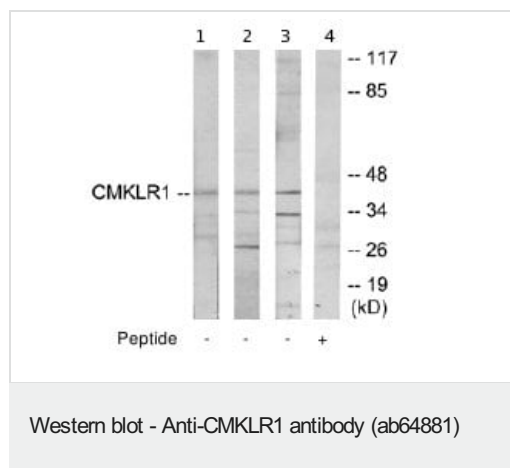
The Abpromise guarantee Abpromise保証は、次のテスト済みアプリケーションにおけるab64881の使用に適用されます
アプリケーションノートには、推奨の開始希釈率がありますが、適切な希釈率につきましてはご検討ください。

アプリケーション	Abreviews	特記事項
WB	★★★★★ (1)	1/500 - 1/1000. Detects a band of approximately 43 kDa (predicted molecular weight: 43 kDa).

ターゲット情報

機能	Orphan receptor. Could be a chemotactic peptide receptor. May have a function in bone metabolism. Acts as a coreceptor for several SIV strains (SIVMAC316, SIVMAC239, SIVMACL7E-FR and SIVSM62A), as well as a primary HIV-1 strain (92UG024-2).
組織特異性	Prominently expressed in developing osseous and cartilaginous tissue. Also found in adult parathyroid glands.
配列類似性	Belongs to the G-protein coupled receptor 1 family.
発生段階	Expressed during bone development.
細胞内局在	Cell membrane.

画像



All lanes : Anti-CMKLR1 antibody (ab64881) at 1/500 dilution

Lane 1 : extracts from HepG2 cells (5-30µg total protein).

Lane 2 : extracts from HeLa cells (5-30µg total protein).

Lane 3 : extracts from 293 cells (5-30µg total protein).

Lane 4 : extracts from 293 cells (5-30µg total protein) and 5-10µg of the immunising peptide.

Predicted band size: 43 kDa

Observed band size: 43 kDa

Additional bands at: 26 kDa, 34 kDa. We are unsure as to the identity of these extra bands.

Please note: All products are "FOR RESEARCH USE ONLY. NOT FOR USE IN DIAGNOSTIC PROCEDURES"

Our Abpromise to you: Quality guaranteed and expert technical support

- Replacement or refund for products not performing as stated on the datasheet
- Valid for 12 months from date of delivery
- Response to your inquiry within 24 hours
- We provide support in Chinese, English, French, German, Japanese and Spanish
- Extensive multi-media technical resources to help you
- We investigate all quality concerns to ensure our products perform to the highest standards

If the product does not perform as described on this datasheet, we will offer a refund or replacement. For full details of the Abpromise, please visit <https://www.abcam.co.jp/abpromise> or contact our technical team.

Terms and conditions

- Guarantee only valid for products bought direct from Abcam or one of our authorized distributors