

Anti-Clusterin antibody ab79280

★★★★★ [3 Abreviews](#) [画像数 4](#)

製品の概要

製品名	Anti-Clusterin antibody
製品の詳細	Goat polyclonal to Clusterin
由来種	Goat
アプリケーション	適用あり: ICC/IF, WB
種交差性	交差種: Rat, Human
免疫原	Synthetic peptide corresponding to Mouse Clusterin aa 435-448 (C terminal). Sequence: C-EKALQEYRRKSRAE Run BLAST with Run BLAST with
ポジティブ・コントロール	ICC/IF: PC12 cells
特記事項	<p>The Life Science industry has been in the grips of a reproducibility crisis for a number of years. Abcam is leading the way in addressing this with our range of recombinant monoclonal antibodies and knockout edited cell lines for gold-standard validation. Please check that this product meets your needs before purchasing.</p> <p>If you have any questions, special requirements or concerns, please send us an inquiry and/or contact our Support team ahead of purchase. Recommended alternatives for this product can be found below, along with publications, customer reviews and Q&As</p>

製品の特性

製品の状態	Liquid
保存方法	Shipped at 4°C. Upon delivery aliquot and store at -20°C. Avoid repeated freeze / thaw cycles.
バッファー	pH: 7.30 Preservative: 0.02% Sodium azide Constituents: 0.5% Tris buffered saline, 0.5% BSA
精製度	Immunogen affinity purified
特記事項 (精製)	ab79280 was purified from goat serum by ammonium sulphate precipitation followed by antigen affinity chromatography using the immunizing peptide.
ポリ/モノ	ポリクローナル
アイソタイプ	IgG

アプリケーション

The Abpromise guarantee Abpromise保証は、 次のテスト済みアプリケーションにおけるab79280の使用に適用されます
アプリケーションノートには、推奨の開始希釈率がありますが、適切な希釈率につきましてはご検討ください。

アプリケーション	Abreviews	特記事項
ICC/IF		
WB		

追加情報

Peptide ELISA: Antibody detection limit dilution 1/8000.
WB: Use at a concentration of 0.3 - 1 µg/ml. Detects a band of approximately 37 kDa (predicted molecular weight: 52 kDa).

Not yet tested in other applications.
Optimal dilutions/concentrations should be determined by the end user.

ターゲット情報

機能

Isoform 1 functions as extracellular chaperone that prevents aggregation of nonnative proteins. Prevents stress-induced aggregation of blood plasma proteins. Inhibits formation of amyloid fibrils by APP, APOC2, B2M, CALCA, CSN3, SNCA and aggregation-prone LYZ variants (in vitro). Does not require ATP. Maintains partially unfolded proteins in a state appropriate for subsequent refolding by other chaperones, such as HSPA8/HSC70. Does not refold proteins by itself. Binding to cell surface receptors triggers internalization of the chaperone-client complex and subsequent lysosomal or proteasomal degradation. Secreted isoform 1 protects cells against apoptosis and against cytolysis by complement. Intracellular isoforms interact with ubiquitin and SCF (SKP1-CUL1-F-box protein) E3 ubiquitin-protein ligase complexes and promote the ubiquitination and subsequent proteasomal degradation of target proteins. Promotes proteasomal degradation of COMMD1 and IKBKB. Modulates NF-kappa-B transcriptional activity. Nuclear isoforms promote apoptosis. Mitochondrial isoforms suppress BAX-dependent release of cytochrome c into the cytoplasm and inhibit apoptosis. Plays a role in the regulation of cell proliferation.

組織特異性

Detected in blood plasma, cerebrospinal fluid, milk, seminal plasma and colon mucosa. Detected in the germinal center of colon lymphoid nodules and in colon parasympathetic ganglia of the Auerbach plexus (at protein level). Ubiquitous. Detected in brain, testis, ovary, liver and pancreas, and at lower levels in kidney, heart, spleen and lung.

配列類似性

Belongs to the clusterin family.

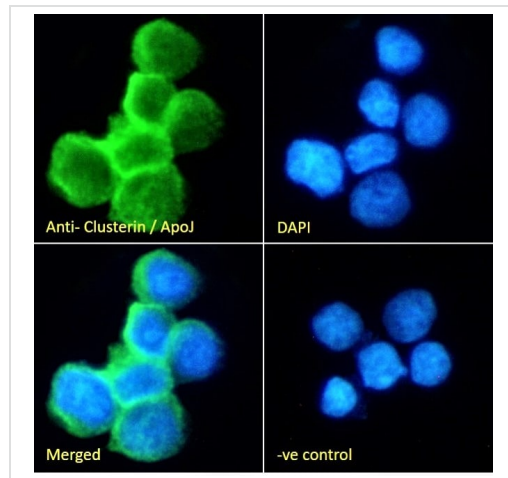
翻訳後修飾

Isoform 1 is proteolytically cleaved on its way through the secretory system, probably within the Golgi lumen.
Polyubiquitinated, leading to proteasomal degradation.
Heavily N-glycosylated. About 30% of the protein mass is comprised of complex N-linked carbohydrate.

細胞内局在

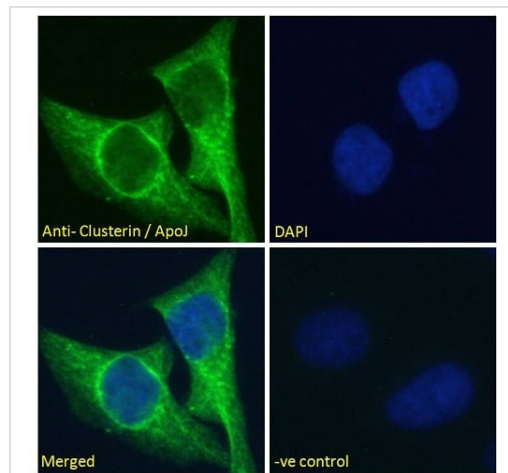
Secreted. Can retrotranslocate from the secretory compartments to the cytosol upon cellular stress and Nucleus. Cytoplasm. Mitochondrion membrane. Cytoplasm, cytosol. Microsome. Endoplasmic reticulum. Cytoplasmic vesicle, secretory vesicle, chromaffin granule. Isoforms lacking the N-terminal signal sequence have been shown to be cytoplasmic and/or nuclear. Secreted isoforms can retrotranslocate from the secretory compartments to the cytosol upon cellular stress. Detected in perinuclear foci that may be aggresomes containing misfolded,

画像



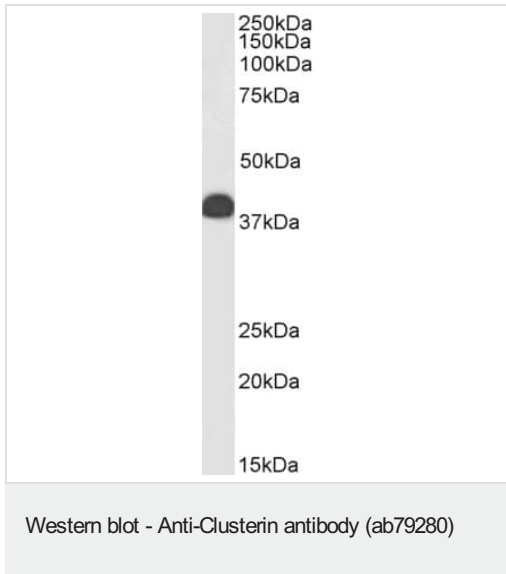
Immunocytochemistry/ Immunofluorescence - Anti-Clusterin antibody (ab79280)

Immunofluorescence analysis of paraformaldehyde fixed PC12 suspension cells, permeabilized with 0.15% Triton. Primary incubation 1hr using ab79280 (10ug/ml) followed by Alexa Fluor 488 secondary antibody (2ug/ml), showing membrane and cytoplasmic staining. The nuclear stain is DAPI (blue). Negative control: Unimmunized goat IgG (10ug/ml) followed by Alexa Fluor 488 secondary antibody (2ug/ml).



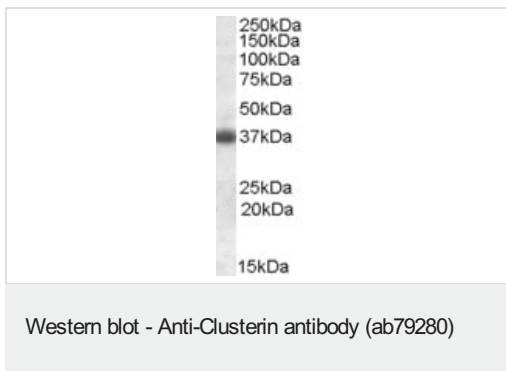
Immunocytochemistry/ Immunofluorescence - Anti-Clusterin antibody (ab79280)

HeLa cells stained for Clusterin (green) using ab79280 at 10 µg/ml in ICC/IF. Cells were permeabilized with 0.15% Triton. DAPI was used as a nuclear counterstain.



Anti-Clusterin antibody (ab79280) at 0.3 µg/ml + Human Testis lysate at 35 µg

Predicted band size: 52 kDa



Anti-Clusterin antibody (ab79280) at 0.3 µg/ml + Rat Brain lysate (in RIPA buffer) at 35 µg

Predicted band size: 52 kDa

Observed band size: 37 kDa

The observed molecular weight corresponds to earlier findings in literature with different antibodies (Miyata et al, Circulation. 2001 Sep 18;104(12):1407-12.; PMID: 11560857).

Please note: All products are "FOR RESEARCH USE ONLY. NOT FOR USE IN DIAGNOSTIC PROCEDURES"

Our Abpromise to you: Quality guaranteed and expert technical support

- Replacement or refund for products not performing as stated on the datasheet
- Valid for 12 months from date of delivery
- Response to your inquiry within 24 hours

- We provide support in Chinese, English, French, German, Japanese and Spanish
- Extensive multi-media technical resources to help you
- We investigate all quality concerns to ensure our products perform to the highest standards

If the product does not perform as described on this datasheet, we will offer a refund or replacement. For full details of the Abpromise, please visit <https://www.abcam.co.jp/abpromise> or contact our technical team.

Terms and conditions

- Guarantee only valid for products bought direct from Abcam or one of our authorized distributors