

Anti-CLMN antibody ab121373

1 References [画像数 4](#)

製品の概要

製品名	Anti-CLMN antibody
製品の詳細	Rabbit polyclonal to CLMN
由来種	Rabbit
アプリケーション	適用あり: ICC/IF, IHC-P
種交差性	交差種: Human
免疫原	antigen, corresponding to amino acids 446-553 of Human CLMN.
ポジティブ・コントロール	Human liver lysate; Human kidney tissue.
特記事項	<p>The Life Science industry has been in the grips of a reproducibility crisis for a number of years. Abcam is leading the way in addressing this with our range of recombinant monoclonal antibodies and knockout edited cell lines for gold-standard validation. Please check that this product meets your needs before purchasing.</p> <p>If you have any questions, special requirements or concerns, please send us an inquiry and/or contact our Support team ahead of purchase. Recommended alternatives for this product can be found below, along with publications, customer reviews and Q&As</p>

製品の特性

製品の状態	Liquid
保存方法	Shipped at 4°C. Upon delivery aliquot and store at -20°C. Avoid freeze / thaw cycles.
バッファー	pH: 7.20 Preservative: 0.02% Sodium azide Constituents: 40% Glycerol (glycerin, glycerine), 59% PBS
精製度	Immunogen affinity purified
ポリ/モノ	ポリクローナル
アイソタイプ	IgG

アプリケーション

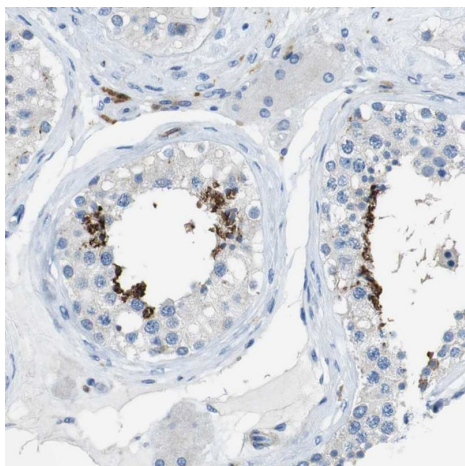
The Abpromise guarantee **Abpromise保証は、** 次のテスト済みアプリケーションにおけるab121373の使用に適用されます
アプリケーションノートには、推奨の開始希釈率がありますが、適切な希釈率につきましてはご検討ください。

アプリケーション	Abreviews	特記事項
ICC/IF		Use a concentration of 0.25 - 2 µg/ml.
IHC-P		1/50 - 1/200. Perform heat mediated antigen retrieval with citrate buffer pH 6 before commencing with IHC staining protocol.

ターゲット情報

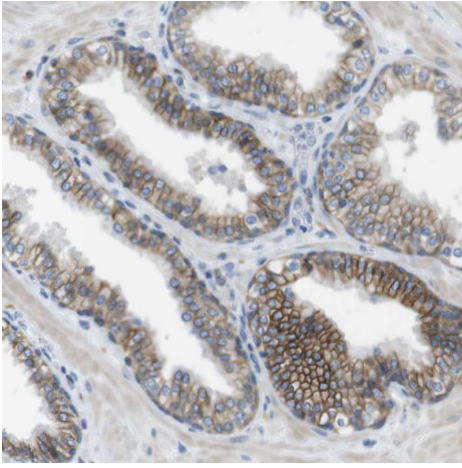
組織特異性	Widely expressed at intermediate level.
配列類似性	Contains 1 actin-binding domain. Contains 2 CH (calponin-homology) domains.
細胞内局在	Membrane.

画像



Immunohistochemical analysis of human testis tissue labelled for CLMN using ab121373 at 1/200 dilution. Positive cytoplasmic staining observed in seminiferous duct cells.

Immunohistochemistry (Formalin/PFA-fixed paraffin-embedded sections) - Anti-CLMN antibody (ab121373)



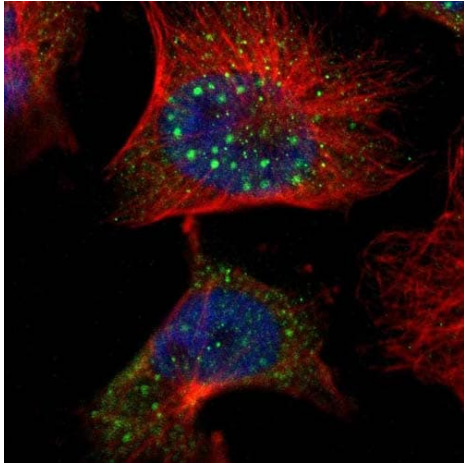
Immunohistochemical analysis of human prostate tissue labelled for CLMN using ab121373 at 1/200 dilution. Positive membranous staining observed in glandular cells.

Immunohistochemistry (Formalin/PFA-fixed paraffin-embedded sections) - Anti-CLMN antibody (ab121373)



Immunohistochemical analysis of human colon tissue labelled for CLMN using ab121373 at 1/200 dilution. Positive membranous and cytoplasmic staining observed in glandular cells.

Immunohistochemistry (Formalin/PFA-fixed paraffin-embedded sections) - Anti-CLMN antibody (ab121373)



Immunocytochemistry/ Immunofluorescence - Anti-CLMN antibody (ab121373)

Immunofluorescent staining of Human cell line U-251MG shows positivity in nucleus and cytoplasm. Recommended concentration of ab121373 1-4 µg/ml. Cells treated with PFA/Triton X-100.

Please note: All products are "FOR RESEARCH USE ONLY. NOT FOR USE IN DIAGNOSTIC PROCEDURES"

Our Abpromise to you: Quality guaranteed and expert technical support

- Replacement or refund for products not performing as stated on the datasheet
- Valid for 12 months from date of delivery
- Response to your inquiry within 24 hours
- We provide support in Chinese, English, French, German, Japanese and Spanish
- Extensive multi-media technical resources to help you
- We investigate all quality concerns to ensure our products perform to the highest standards

If the product does not perform as described on this datasheet, we will offer a refund or replacement. For full details of the Abpromise, please visit <https://www.abcam.co.jp/abpromise> or contact our technical team.

Terms and conditions

- Guarantee only valid for products bought direct from Abcam or one of our authorized distributors