

Anti-CLK4 antibody ab67936

[2 References](#) [画像数 1](#)

製品の概要

製品名	Anti-CLK4 antibody
製品の詳細	Mouse polyclonal to CLK4
由来種	Mouse
アプリケーション	適用あり: WB
種交差性	交差種: Human
免疫原	Recombinant full length protein within Human CLK4. The exact immunogen sequence used to generate this antibody is proprietary information. If additional detail on the immunogen is needed to determine the suitability of the antibody for your needs, please contact our Scientific Support team to discuss your requirements.
ポジティブ・コントロール	CLK4 transfected 293T cell lysate
特記事項	<p>The Life Science industry has been in the grips of a reproducibility crisis for a number of years. Abcam is leading the way in addressing this with our range of recombinant monoclonal antibodies and knockout edited cell lines for gold-standard validation. Please check that this product meets your needs before purchasing.</p> <p>If you have any questions, special requirements or concerns, please send us an inquiry and/or contact our Support team ahead of purchase. Recommended alternatives for this product can be found below, along with publications, customer reviews and Q&As</p>

製品の特性

製品の状態	Liquid
保存方法	Shipped at 4°C. Upon delivery aliquot and store at -20°C or -80°C. Avoid repeated freeze / thaw cycles.
バッファー	pH: 7.40 Constituent: 100% PBS
精製度	Protein G purified
ポリ/モノ	ポリクローナル
アイソタイプ	IgG

アプリケーション

The Abpromise guarantee

Abpromise保証は、次のテスト済みアプリケーションにおけるab67936の使用に適用されます

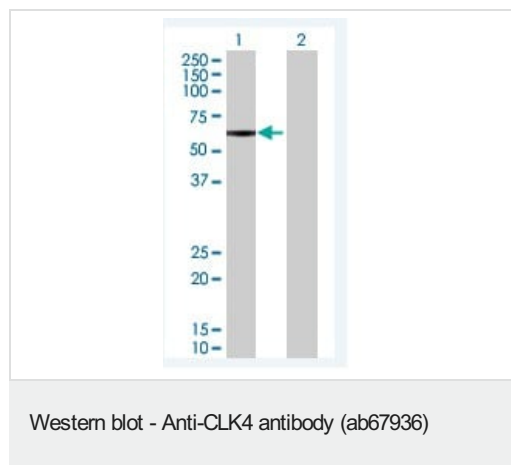
アプリケーションノートには、推奨の開始希釈率がありますが、適切な希釈率につきましてはご検討ください。

アプリケーション	Abreviews	特記事項
WB		1/500 - 1/1000. Detects a band of approximately 62 kDa (predicted molecular weight: 57 kDa).

ターゲット情報

機能	Dual specificity kinase acting on both serine/threonine and tyrosine-containing substrates. Phosphorylates serine- and arginine-rich (SR) proteins of the spliceosomal complex and may be a constituent of a network of regulatory mechanisms that enable SR proteins to control RNA splicing. Phosphorylates SRSF1 and SRSF3. Required for the regulation of alternative splicing of MAPT/TAU. Regulates the alternative splicing of tissue factor (F3) pre-mRNA in endothelial cells.
組織特異性	Expressed in liver, kidney, heart, muscle, brain and endothelial cells.
配列類似性	Belongs to the protein kinase superfamily. CMGC Ser/Thr protein kinase family. Lammer subfamily. Contains 1 protein kinase domain.
翻訳後修飾	Autophosphorylates on all three types of residues.
細胞内局在	Nucleus.

画像



All lanes : Anti-CLK4 antibody (ab67936) at 1/500 dilution

Lane 1 : CLK4 transfected 293T cell lysate

Lane 2 : non transfected 293T cell lysate

Lysates/proteins at 25 µg per lane.

Secondary

All lanes : Goat Anti-Mouse IgG (H&L)-HRP Conjugate at 1/2500 dilution

Predicted band size: 57 kDa

Observed band size: 62 kDa

Please note: All products are "FOR RESEARCH USE ONLY. NOT FOR USE IN DIAGNOSTIC PROCEDURES"

Our Abpromise to you: Quality guaranteed and expert technical support

- Replacement or refund for products not performing as stated on the datasheet
- Valid for 12 months from date of delivery
- Response to your inquiry within 24 hours

- We provide support in Chinese, English, French, German, Japanese and Spanish
- Extensive multi-media technical resources to help you
- We investigate all quality concerns to ensure our products perform to the highest standards

If the product does not perform as described on this datasheet, we will offer a refund or replacement. For full details of the Abpromise, please visit <https://www.abcam.co.jp/abpromise> or contact our technical team.

Terms and conditions

- Guarantee only valid for products bought direct from Abcam or one of our authorized distributors