


Anti-CLK2 antibody ab86147

★★★★★ [4 Abreviews](#) [3 References](#) [画像数 3](#)

製品の概要

製品名	Anti-CLK2 antibody
製品の詳細	Rabbit polyclonal to CLK2
由来種	Rabbit
特異性	From Jan 2024, QC testing of replenishment batches of this polyclonal changed. All tested and expected application and reactive species combinations are still covered by our Abcam product promise. However, we no longer test all applications. For more information on a specific batch, please contact our Scientific Support who will be happy to help.
アプリケーション	適用あり: WB, ICC
種交差性	交差種: Human 交差が予測される動物種: Mouse, Rat, Chinese hamster 
免疫原	Synthetic peptide. This information is proprietary to Abcam and/or its suppliers.
ポジティブ・コントロール	WB: HeLa whole cell lysate. ICC: HepG2 cells.
特記事項	<p>The Life Science industry has been in the grips of a reproducibility crisis for a number of years. Abcam is leading the way in addressing this with our range of recombinant monoclonal antibodies and knockout edited cell lines for gold-standard validation. Please check that this product meets your needs before purchasing.</p> <p>If you have any questions, special requirements or concerns, please send us an inquiry and/or contact our Support team ahead of purchase. Recommended alternatives for this product can be found below, along with publications, customer reviews and Q&As</p>

製品の特性

製品の状態	Liquid
保存方法	Shipped at 4°C. Store at +4°C short term (1-2 weeks). Upon delivery aliquot. Store at -20°C or -80°C. Avoid freeze / thaw cycle.
バッファー	pH: 7.40 Preservative: 0.02% Sodium azide Constituent: PBS
	Batches of this product that have a concentration < 1mg/ml may have BSA added as a stabilising agent. If you would like information about the formulation of a specific lot, please contact our

scientific support team who will be happy to help.

精製度

Immunogen affinity purified

ポリ/モノ

ポリクローナル

アイソタイプ

IgG

アプリケーション

The Abpromise guarantee

Abpromise保証は、次のテスト済みアプリケーションにおけるab86147の使用に適用されます

アプリケーションノートには、推奨の開始希釈率がありますが、適切な希釈率につきましてはご確認ください。

アプリケーション	Abreviews	特記事項
WB	★★★★★ (2)	Use a concentration of 0.5 µg/ml. Detects a band of approximately 60 kDa (predicted molecular weight: 60 kDa).
ICC		Use a concentration of 1 µg/ml.

ターゲット情報

機能

Phosphorylates serine- and arginine-rich (SR) proteins of the spliceosomal complex may be a constituent of a network of regulatory mechanisms that enable SR proteins to control RNA splicing. Phosphorylates serines, threonines and tyrosines.

配列類似性

Belongs to the protein kinase superfamily. CMGC Ser/Thr protein kinase family. Lammer subfamily.

Contains 1 protein kinase domain.

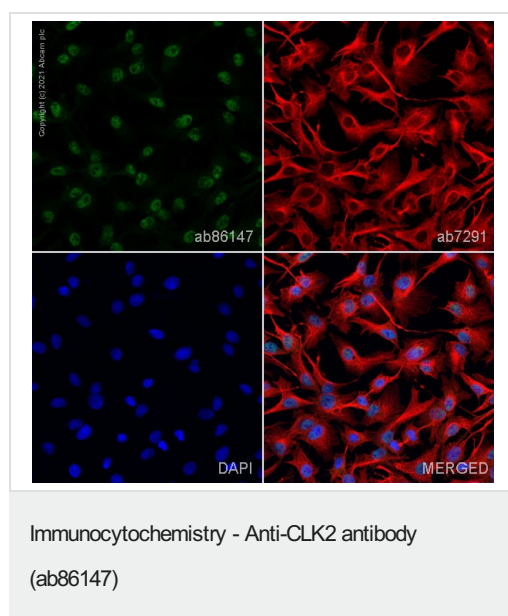
翻訳後修飾

Autophosphorylates on all three types of residues.

細胞内局在

Nucleus.

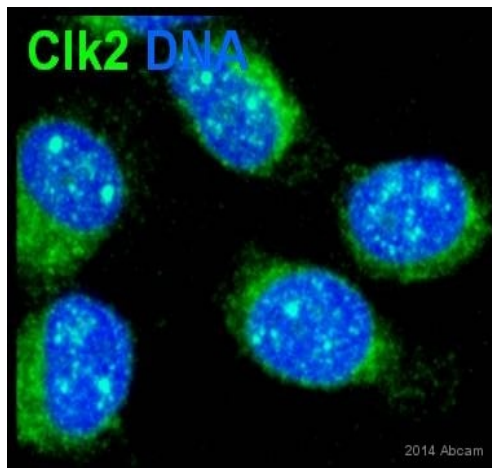
画像



ab86147 staining CLK2 in HepG2 cells. The cells were fixed with 4% paraformaldehyde (10 min), permeabilized with 0.1% PBS-Triton X-100 for 5 minutes and then blocked with 1% BSA/10% normal goat serum/0.3M glycine in 0.1%PBS-Tween for 1h. The cells were then incubated overnight at 4°C with ab86147 at 1µg/ml and **ab7291**, Mouse monoclonal [DM1A] to alpha Tubulin - Loading Control. Cells were then incubated with **ab150081**, Goat polyclonal Secondary Antibody to Rabbit IgG - H&L (Alexa Fluor® 488), pre-adsorbed at 1/1000 dilution (shown in green) and **ab150120**, Goat polyclonal Secondary Antibody to Mouse IgG - H&L (Alexa Fluor® 594), pre-adsorbed at 1/1000 dilution (shown in pseudocolour red). Nuclear DNA was labelled with DAPI (shown in blue).

Image was acquired with a high-content analyser (Operetta CLS,

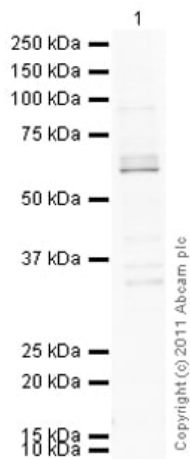
Perkin Elmer) and a maximum intensity projection of confocal sections is shown.



Immunocytochemistry - Anti-CLK2 antibody
(ab86147)

This image is courtesy of an Abreview submitted by
Eleni Petsalaki

ab86147 staining CLK2 in human colon carcinoma cells by ICC/IF (Immunocytochemistry/immunofluorescence). Cells were fixed with methanol and blocked with 1% BSA for 30 minutes at 37°C. Samples were incubated with primary antibody (1/30 in PBS + 1% BSA) for 16 hour at 4°C. A FITC-conjugated goat anti-rabbit IgG polyclonal (1/100) was used as the secondary antibody.



Western blot - Anti-CLK2 antibody (ab86147)

Anti-CLK2 antibody (ab86147) at 0.5 µg/ml + HeLa (Human epithelial carcinoma cell line) Whole Cell Lysate at 10 µg

Secondary

Goat polyclonal to Rabbit IgG - H&L - Pre-Adsorbed (HRP) at 1/3000 dilution

Developed using the ECL technique.

Performed under reducing conditions.

Predicted band size: 60 kDa

Observed band size: 60 kDa

Additional bands at: 36 kDa, 64 kDa, 94 kDa. We are unsure as to the identity of these extra bands.

Exposure time: 8 minutes

Human Dual specificity protein kinase CLK2 contains a number of potential phosphorylation sites (SwissProt) which may explain the banding pattern at a higher molecular weight than predicted (64 kDa).

Please note: All products are "FOR RESEARCH USE ONLY. NOT FOR USE IN DIAGNOSTIC PROCEDURES"

Our Abpromise to you: Quality guaranteed and expert technical support

- Replacement or refund for products not performing as stated on the datasheet
- Valid for 12 months from date of delivery
- Response to your inquiry within 24 hours

- We provide support in Chinese, English, French, German, Japanese and Spanish
- Extensive multi-media technical resources to help you
- We investigate all quality concerns to ensure our products perform to the highest standards

If the product does not perform as described on this datasheet, we will offer a refund or replacement. For full details of the Abpromise, please visit <https://www.abcam.co.jp/abpromise> or contact our technical team.

Terms and conditions

- Guarantee only valid for products bought direct from Abcam or one of our authorized distributors