


Anti-CLINT1 antibody ab86046

画像数 2

製品の概要

製品名	Anti-CLINT1 antibody
製品の詳細	Rabbit polyclonal to CLINT1
由来種	Rabbit
アプリケーション	適用あり: WB, IP
種交差性	<p>交差種: Mouse, Human</p> <p>交差が予測される動物種: Rat, Rabbit, Horse, Guinea pig, Cow, Dog, Pig, Rhesus monkey, Gorilla, Orangutan, Platypus </p>
免疫原	Synthetic peptide corresponding to a region between residues 250 and 300 of Human CLINT1 (NP_055481.1).
ポジティブ・コントロール	HeLa, 293T and NIH3T3 whole cell lysates.
特記事項	<p>The Life Science industry has been in the grips of a reproducibility crisis for a number of years. Abcam is leading the way in addressing this with our range of recombinant monoclonal antibodies and knockout edited cell lines for gold-standard validation. Please check that this product meets your needs before purchasing.</p> <p>If you have any questions, special requirements or concerns, please send us an inquiry and/or contact our Support team ahead of purchase. Recommended alternatives for this product can be found below, along with publications, customer reviews and Q&As</p>

製品の特性

製品の状態	Liquid
保存方法	Shipped at 4°C. Upon delivery aliquot and store at -20°C. Avoid freeze / thaw cycles.
バッファー	<p>pH: 6.8</p> <p>Preservative: 0.09% Sodium azide</p> <p>Constituents: Tris buffered saline, 0.1% BSA</p>
精製度	Immunogen affinity purified
ポリ/モノ	ポリクローナル
アイソタイプ	IgG

アプリケーション

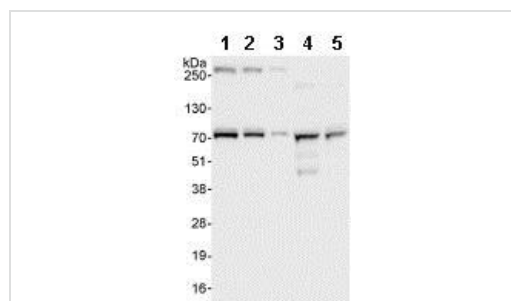
The Abpromise guarantee **Abpromise保証は、** 次のテスト済みアプリケーションにおけるab86046の使用に適用されます
 アプリケーションノートには、推奨の開始希釈率がありますが、適切な希釈率につきましてはご検討ください。

アプリケーション	Abreviews	特記事項
WB		1/2000 - 1/10000. Predicted molecular weight: 68 kDa.
IP		Use at 2-5 µg/mg of lysate.

ターゲット情報

機能	Binds to membranes enriched in phosphatidylinositol-4,5-bisphosphate (PtdIns(4,5)P ₂). May have a role in transport via clathrin-coated vesicles from the trans-Golgi network to endosomes. Stimulates clathrin assembly.
組織特異性	Ubiquitously expressed at low to intermediate levels.
配列類似性	Belongs to the epsin family. Contains 1 ENTH (epsin N-terminal homology) domain.
細胞内局在	Cytoplasm. Cytoplasm > perinuclear region. Membrane. Cytoplasmic vesicle > clathrin-coated vesicle. Found throughout the cell, with the exception of the cell surface. Concentrated in the perinuclear region and associated with clathrin-coated vesicles close to the trans-Golgi network.

画像



Western blot - Anti-CLINT1 antibody (ab86046)

All lanes : Anti-CLINT1 antibody (ab86046) at 0.04 µg/ml

Lane 1 : HeLa whole cell lysate at 50 µg

Lane 2 : HeLa whole cell lysate at 15 µg

Lane 3 : HeLa whole cell lysate at 5 µg

Lane 4 : 293T whole cell lysate at 50 µg

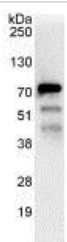
Lane 5 : NIH3T3 whole cell lysate at 50 µg

Developed using the ECL technique.

Predicted band size: 68 kDa

Observed band size: 72 kDa

Exposure time: 3 seconds



Immunoprecipitation - Anti-CLINT1 antibody
(ab86046)

Detection of Human CLINT1 in Immunoprecipitates of Whole cell lysate from HeLa cells (1 mg for IP, 20% of IP loaded) using ab86046 at 3 µg/mg lysate for IP and at 1 µg/ml for subsequent Western blot detection. Detection: Chemiluminescence with an exposure time of 10 seconds.

Please note: All products are "FOR RESEARCH USE ONLY. NOT FOR USE IN DIAGNOSTIC PROCEDURES"

Our Abpromise to you: Quality guaranteed and expert technical support

- Replacement or refund for products not performing as stated on the datasheet
- Valid for 12 months from date of delivery
- Response to your inquiry within 24 hours
- We provide support in Chinese, English, French, German, Japanese and Spanish
- Extensive multi-media technical resources to help you
- We investigate all quality concerns to ensure our products perform to the highest standards

If the product does not perform as described on this datasheet, we will offer a refund or replacement. For full details of the Abpromise, please visit <https://www.abcam.co.jp/abpromise> or contact our technical team.

Terms and conditions

- Guarantee only valid for products bought direct from Abcam or one of our authorized distributors