

Anti-Cleaved PARP1 antibody ab4830

★★★★★ [4 Abreviews](#) [48 References](#) [画像数 3](#)

製品の概要

製品名	Anti-Cleaved PARP1 antibody
製品の詳細	Rabbit polyclonal to Cleaved PARP1
由来種	Rabbit
特異性	This antibody specifically recognizes the 85 kDa fragment of cleaved PARP1 and can be used as marker for detecting apoptotic cells. Cleavage site specific antibody, unconjugated. The antiserum was produced against a chemically synthesized peptide corresponding to the N-terminus of cleavage site (214/215) of human PARP1 and will recognize Asp 214 and Gly 215.
アプリケーション	適用あり: WB
種交差性	交差種: Human
免疫原	Synthetic peptide corresponding to Human Cleaved PARP1. (Peptide available as ab10779)
ポジティブ・コントロール	WB: THP1 Nuclear Enriched, HeLa Nuclear Enriched, KARPAS-299 and Daudi cell lysate. HeLa and Jurkat cells.
特記事項	<p>The Life Science industry has been in the grips of a reproducibility crisis for a number of years. Abcam is leading the way in addressing this with our range of recombinant monoclonal antibodies and knockout edited cell lines for gold-standard validation. Please check that this product meets your needs before purchasing.</p> <p>If you have any questions, special requirements or concerns, please send us an inquiry and/or contact our Support team ahead of purchase. Recommended alternatives for this product can be found below, along with publications, customer reviews and Q&As</p>

製品の特性

製品の状態	Liquid
保存方法	Shipped at 4°C. Upon delivery aliquot and store at -20°C or -80°C. Avoid repeated freeze / thaw cycles.
バッファー	<p>pH: 7.3</p> <p>Preservative: 0.05% Sodium azide</p> <p>Constituents: PBS, 50% Glycerol, 0.1% BSA</p> <p>BSA is IgG and protease free</p>

精製度	Immunogen affinity purified
特記事項 (精製)	Purified from rabbit serum by sequential epitope-specific chromatography. The antibody has been negatively preadsorbed using a peptide spanning the cleavage site to remove antibody that is reactive with full length PARP1. The final product is generated by affinity chromatography using a peptide corresponding to the PARP1 cleavage site.
ポリ/モノ	ポリクローナル
アイソタイプ	IgG

アプリケーション

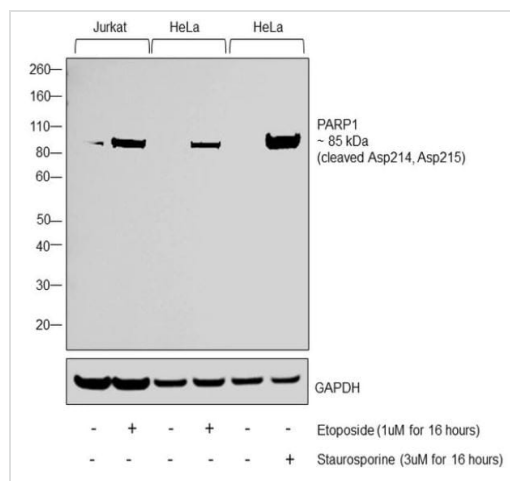
The Abpromise guarantee **Abpromise保証は、次のテスト済みアプリケーションにおけるab4830の使用に適用されます**
 アプリケーションノートには、推奨の開始希釈率がありますが、適切な希釈率につきましてはご検討ください。

アプリケーション	Abreviews	特記事項
WB	★★★★★ (4)	1/1000. Detects a band of approximately 85 kDa (predicted molecular weight: 85 kDa).

ターゲット情報

機能	Involved in the base excision repair (BER) pathway, by catalyzing the poly(ADP-ribosyl)ation of a limited number of acceptor proteins involved in chromatin architecture and in DNA metabolism. This modification follows DNA damages and appears as an obligatory step in a detection/signaling pathway leading to the reparation of DNA strand breaks. Mediates the poly(ADP-ribosyl)ation of APLF and CHFR. Positively regulates the transcription of MTUS1 and negatively regulates the transcription of MTUS2/TIP150. With EEF1A1 and TXK, forms a complex that acts as a T-helper 1 (Th1) cell-specific transcription factor and binds the promoter of IFN-gamma to directly regulate its transcription, and is thus involved importantly in Th1 cytokine production. Required for PARP9 and DTX3L recruitment to DNA damage sites. PARP1-dependent PARP9-DTX3L-mediated ubiquitination promotes the rapid and specific recruitment of 53BP1/TP53BP1, UIMC1/RAP80, and BRCA1 to DNA damage sites.
配列類似性	Contains 1 BRCT domain. Contains 1 PARP alpha-helical domain. Contains 1 PARP catalytic domain. Contains 2 PARP-type zinc fingers.
翻訳後修飾	Phosphorylated by PRKDC and TXK. Poly-ADP-ribosylated by PARP2. Poly-ADP-ribosylation mediates the recruitment of CHD1L to DNA damage sites. S-nitrosylated, leading to inhibit transcription regulation activity.
細胞内局在	Nucleus. Nucleus, nucleolus. Localizes at sites of DNA damage.

画像



Western blot - Anti-Cleaved PARP1 antibody (ab4830)

All lanes : Anti-Cleaved PARP1 antibody (ab4830) at 1/1000 dilution

Lane 1 : Jurkat cell lysate

Lane 2 : Jurkat cells treated with Etoposide (1 μ M for 16 hours)

Lanes 3 & 5 : HeLa cell lysate

Lane 4 : HeLa cells treated with Etoposide (1 μ M for 16 hours)

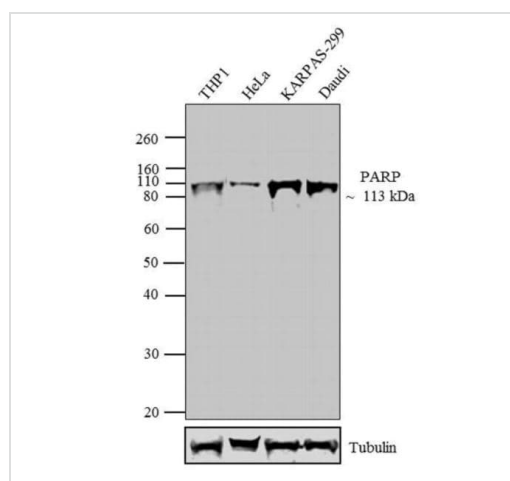
Lane 6 : HeLa cells treated with Staurosporine (3 μ M for 16 hours)

Lysates/proteins at 40 μ g per lane.

Secondary

All lanes : Goat anti-Rabbit IgG (H+L) Superclonal™ Recombinant Secondary Antibody, HRP at 1/14000 dilution

Predicted band size: 85 kDa



Western blot - Anti-Cleaved PARP1 antibody (ab4830)

All lanes : Anti-Cleaved PARP1 antibody (ab4830) at 1/2000 dilution

Lane 1 : THP1 Nuclear Enriched

Lane 2 : HeLa Nuclear Enriched

Lane 3 : KARPAS-299

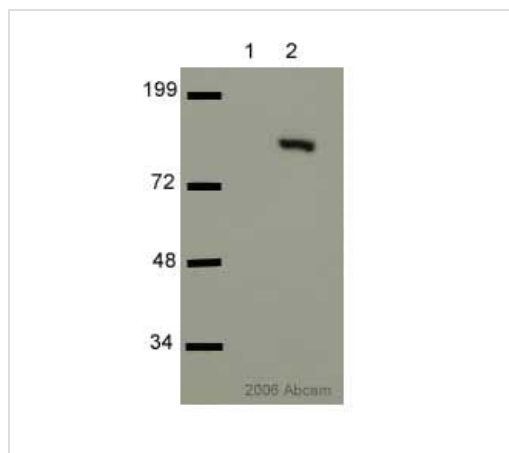
Lane 4 : Daudi cell lysate

Lysates/proteins at 30 μ g per lane.

Secondary

All lanes : Anti-Rabbit IgG (H+L) Superclonal™ Secondary Antibody, HRP conjugate at 1/2500 dilution

Predicted band size: 85 kDa



Western blot - Anti-Cleaved PARP1 antibody (ab4830)

This image is courtesy of an Abreview submitted by Adam Szadkowski on 26 January 2006.

All lanes : Anti-Cleaved PARP1 antibody (ab4830) at 1/1000 dilution

Lane 1 : Non-induced Jurkat cells

Lane 2 : Induced Jurkat cells

Secondary

All lanes : Goat Anti-Rabbit HRP

Developed using the ECL technique.

Performed under reducing conditions.

Predicted band size: 85 kDa

Observed band size: 85 kDa

Exposure time: 5 seconds

Please note: All products are "FOR RESEARCH USE ONLY. NOT FOR USE IN DIAGNOSTIC PROCEDURES"

Our Abpromise to you: Quality guaranteed and expert technical support

- Replacement or refund for products not performing as stated on the datasheet
- Valid for 12 months from date of delivery
- Response to your inquiry within 24 hours
- We provide support in Chinese, English, French, German, Japanese and Spanish
- Extensive multi-media technical resources to help you
- We investigate all quality concerns to ensure our products perform to the highest standards

If the product does not perform as described on this datasheet, we will offer a refund or replacement. For full details of the Abpromise, please visit <https://www.abcam.co.jp/abpromise> or contact our technical team.

Terms and conditions

- Guarantee only valid for products bought direct from Abcam or one of our authorized distributors