

### Anti-Cleaved NEAS (Asp1185) antibody [EPR3830-17] ab92373

リコンビナント **RabMAb**

画像数 2

#### 製品の概要

製品名	Anti-Cleaved NEAS (Asp1185) antibody [EPR3830-17]
製品の詳細	Rabbit monoclonal [EPR3830-17] to Cleaved NEAS (Asp1185)
由来種	Rabbit
特異性	Only detects the large fragment of Alpha Fodrin resulting from cleavage at aspartic acid 1185.
アプリケーション	<b>適用あり:</b> WB <b>適用なし:</b> Flow Cyt, ICC/IF or IHC-P
種交差性	<b>交差種:</b> Human
免疫原	Synthetic peptide within Human Cleaved NEAS (Asp1185) aa 1150-1250. The exact sequence is proprietary.
ポジティブ・コントロール	HeLa + Camptothecin cell lysate, HeLa cell lysate, Jurkat + Staurosporine cell lysate, Jurkat cell lysate
特記事項	<p>This product is a recombinant monoclonal antibody, which offers several advantages including:</p> <ul style="list-style-type: none"> <li>- High batch-to-batch consistency and reproducibility</li> <li>- Improved sensitivity and specificity</li> <li>- Long-term security of supply</li> <li>- Animal-free production</li> </ul> <p>For more information <a href="#">see here</a>.</p> <p>Our RabMAb<sup>®</sup> technology is a patented hybridoma-based technology for making rabbit monoclonal antibodies. For details on our patents, please refer to <a href="#">RabMAb<sup>®</sup> patents</a>.</p> <p>Mouse, Rat: We have preliminary internal testing data to indicate this antibody may not react with these species. Please contact us for more information.</p>

#### 製品の特性

製品の状態	Liquid
保存方法	Shipped at 4°C. Upon delivery aliquot and store at -20°C. Avoid freeze / thaw cycles.
バッファー	<p>pH: 7.20</p> <p>Preservative: 0.01% Sodium azide</p> <p>Constituents: 9% PBS, 40% Glycerol (glycerin, glycerine), 0.05% BSA, 50% Tissue culture supernatant</p>

精製度	Protein A purified
ポリ/モノ	モノクローナル
クローン名	EPR3830-17
アイソタイプ	IgG

## アプリケーション

**The Abpromise guarantee** Abpromise保証は、 次のテスト済みアプリケーションにおけるab92373の使用に適用されます

アプリケーションノートには、推奨の開始希釈率がありますが、適切な希釈率につきましてはご検討ください。

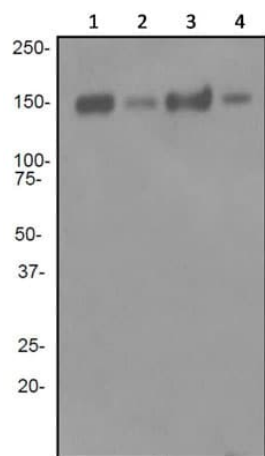
アプリケーション	Abreviews	特記事項
WB		1/10000 - 1/50000. Predicted molecular weight: 285 kDa.

**追加情報** Is unsuitable for Flow Cyt, ICC/IF or IHC-P.

## ターゲット情報

機能	Fodrin, which seems to be involved in secretion, interacts with calmodulin in a calcium-dependent manner and is thus candidate for the calcium-dependent movement of the cytoskeleton at the membrane.
関連疾患	Epileptic encephalopathy, early infantile, 5
配列類似性	Belongs to the spectrin family. Contains 3 EF-hand domains. Contains 1 SH3 domain. Contains 23 spectrin repeats.
翻訳後修飾	Phosphorylation of Tyr-1176 decreases sensitivity to cleavage by calpain in vitro.
細胞内局在	Cytoplasm, cytoskeleton. Cytoplasm, cell cortex. Expressed along the cell membrane in podocytes and presumptive tubule cells during glomerulogenesis and is expressed along lateral cell margins in tubule cells.

## 画像



Western blot - Anti-Cleaved NEAS (Asp1185) antibody [EPR3830-17] (ab92373)

**All lanes :** Anti-Cleaved NEAS (Asp1185) antibody [EPR3830-17] (ab92373)

**Lane 1 :** HeLa + Camptothecin cell lysate

**Lane 2 :** HeLa cell lysate

**Lane 3 :** Jurkat + Staurosporine cell lysate

**Lane 4 :** Jurkat cell lysate

Lysates/proteins at 10 µg per lane.

### Secondary

**All lanes :** HRP labelled goat anti-rabbit at 1/2000 dilution

**Predicted band size:** 285 kDa

**Observed band size:** 150 kDa

### Why choose a recombinant antibody?



**Research with confidence**  
Consistent and reproducible results



**Long-term and scalable supply**  
Recombinant technology



**Success from the first experiment**  
Confirmed specificity



**Ethical standards compliant**  
Animal-free production

Anti-Cleaved NEAS (Asp1185) antibody [EPR3830-17] (ab92373)

**Please note:** All products are "FOR RESEARCH USE ONLY. NOT FOR USE IN DIAGNOSTIC PROCEDURES"

### Our Abpromise to you: Quality guaranteed and expert technical support

- Replacement or refund for products not performing as stated on the datasheet
- Valid for 12 months from date of delivery
- Response to your inquiry within 24 hours
- We provide support in Chinese, English, French, German, Japanese and Spanish
- Extensive multi-media technical resources to help you
- We investigate all quality concerns to ensure our products perform to the highest standards

If the product does not perform as described on this datasheet, we will offer a refund or replacement. For full details of the Abpromise,

please visit <https://www.abcam.co.jp/abpromise> or contact our technical team.

## **Terms and conditions**

---

- Guarantee only valid for products bought direct from Abcam or one of our authorized distributors