


Anti-CLDN16/Claudin-16 antibody ab106504

★★★★★ [1 Abreviews](#) [1 References](#) [画像数 1](#)

製品の概要

製品名	Anti-CLDN16/Claudin-16 antibody
製品の詳細	Rabbit polyclonal to CLDN16/Claudin-16
由来種	Rabbit
特異性	From Mar 2024, QC testing of replenishment batches of this polyclonal changed. All tested and expected application and reactive species combinations are still covered by our Abcam product promise. However, we no longer test all applications. For more information on a specific batch, please contact our Scientific Support who will be happy to help.
アプリケーション	適用あり: WB 適用なし: IHC-P
種交差性	交差種: Human 交差が予測される動物種: Mouse, Rat, Dog, Gorilla 
免疫原	Synthetic peptide corresponding to Human CLDN16/Claudin-16 aa 250 to the C-terminus (C terminal) conjugated to keyhole limpet haemocyanin. (Peptide available as ab125930)
ポジティブ・コントロール	WB: HEK293 whole cell lysate, human adult and fetal kidney tissue lysates.
特記事項	<p>The Life Science industry has been in the grips of a reproducibility crisis for a number of years. Abcam is leading the way in addressing this with our range of recombinant monoclonal antibodies and knockout edited cell lines for gold-standard validation. Please check that this product meets your needs before purchasing.</p> <p>If you have any questions, special requirements or concerns, please send us an inquiry and/or contact our Support team ahead of purchase. Recommended alternatives for this product can be found below, along with publications, customer reviews and Q&As</p>

製品の特性

製品の状態	Liquid
保存方法	Shipped at 4°C. Store at +4°C short term (1-2 weeks). Upon delivery aliquot. Store at -20°C or -80°C. Avoid freeze / thaw cycle.
バッファー	pH: 7.40 Preservative: 0.02% Sodium azide Constituent: PBS

Batches of this product that have a concentration < 1mg/ml may have BSA added as a stabilising agent. If you would like information about the formulation of a specific lot, please contact our scientific support team who will be happy to help.

精製度 Immunogen affinity purified
ポリ/モノ ポリクローナル
アイソタイプ IgG

アプリケーション

The Abpromise guarantee **Abpromise保証は、次のテスト済みアプリケーションにおけるab106504の使用に適用されず**
アプリケーションノートには、推奨の開始希釈率がありますが、適切な希釈率につきましてはご検討ください。

アプリケーション	Abreviews	特記事項
WB		Use a concentration of 1 µg/ml. Detects a band of approximately 34 kDa (predicted molecular weight: 34 kDa).

追加情報 Is unsuitable for IHC-P.

ターゲット情報

機能 Plays a major role in tight junction-specific obliteration of the intercellular space, through calcium-independent cell-adhesion activity. Involved in paracellular magnesium reabsorption. Required for a selective paracellular conductance. May form, alone or in partnership with other constituents, an intercellular pore permitting paracellular passage of magnesium and calcium ions down their electrochemical gradients. Alternatively, it could be a sensor of magnesium concentration that could alter paracellular permeability mediated by other factors.

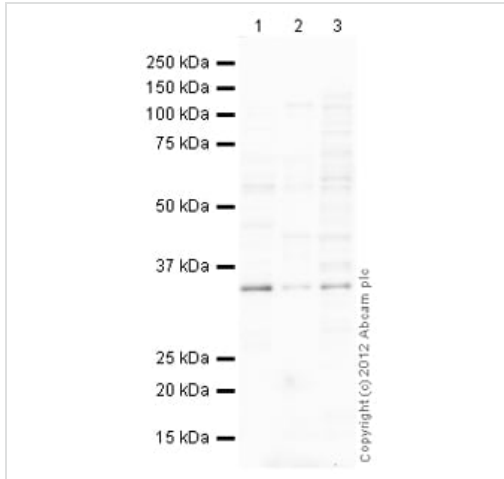
組織特異性 Kidney-specific, including the thick ascending limb of Henle (TAL).

関連疾患 Defects in CLDN16 are the cause of hypomagnesemia type 3 (HOMG3) [MIM:248250]; also known as familial hypomagnesemia with hypercalciuria and nephrocalcinosis (FHHNC). HOMG3 is a progressive renal disease characterized by primary renal magnesium wasting with hypomagnesemia, hypercalciuria and nephrocalcinosis. Recurrent urinary tract infections and kidney stones are often observed. In spite of hypercalciuria, patients do not show hypocalcemia.

配列類似性 Belongs to the claudin family.

細胞内局在 Cell junction > tight junction. Cell membrane.

画像



Western blot - Anti-CLDN16/Claudin-16 antibody (ab106504)

All lanes : Anti-CLDN16/Claudin-16 antibody (ab106504) at 1 µg/ml

Lane 1 : Human kidney tissue lysate - total protein (**ab30203**)

Lane 2 : Kidney (Human) Tissue Lysate - fetal normal tissue (**ab30204**)

Lane 3 : HEK293 (Human embryonic kidney cell line) Whole Cell Lysate

Lysates/proteins at 10 µg per lane.

Secondary

All lanes : Goat Anti-Rabbit IgG H&L (HRP) preadsorbed (**ab97080**) at 1/5000 dilution

Developed using the ECL technique.

Performed under reducing conditions.

Predicted band size: 34 kDa

Observed band size: 34 kDa

Additional bands at: 56 kDa. We are unsure as to the identity of these extra bands.

Exposure time: 4 minutes

Please note: All products are "FOR RESEARCH USE ONLY. NOT FOR USE IN DIAGNOSTIC PROCEDURES"

Our Abpromise to you: Quality guaranteed and expert technical support

- Replacement or refund for products not performing as stated on the datasheet
- Valid for 12 months from date of delivery
- Response to your inquiry within 24 hours
- We provide support in Chinese, English, French, German, Japanese and Spanish
- Extensive multi-media technical resources to help you
- We investigate all quality concerns to ensure our products perform to the highest standards

If the product does not perform as described on this datasheet, we will offer a refund or replacement. For full details of the Abpromise, please visit <https://www.abcam.co.jp/abpromise> or contact our technical team.

Terms and conditions

- Guarantee only valid for products bought direct from Abcam or one of our authorized distributors