





# Anti-CLCA4 antibody ab121524

画像数 1

### 製品の概要

製品名	Anti-CLCA4 antibody
製品の詳細	Rabbit polyclonal to CLCA4
由来種	Rabbit
アプリケーション	<b>適用あり:</b> IHC-P
種交差性	<b>交差種:</b> Human
免疫原	antigen sequence: WVG MVHFDST ATIVNKL IQI KSSDERNTLM AGLPTYPLGG TSICSGIKYA FQVIGELHSQ LDGSEVLLLT DGEDNTASSC IDEV, corresponding to amino acids 56-139 of Human CLCA4.  <b>Run BLAST with</b>   <b>Run BLAST with</b> 
ポジティブ・コントロール	Human duodenum.
特記事項	<p>The Life Science industry has been in the grips of a reproducibility crisis for a number of years. Abcam is leading the way in addressing this with our range of recombinant monoclonal antibodies and knockout edited cell lines for gold-standard validation. Please check that this product meets your needs before purchasing.</p> <p>If you have any questions, special requirements or concerns, please send us an inquiry and/or contact our Support team ahead of purchase. Recommended alternatives for this product can be found below, along with publications, customer reviews and Q&amp;As</p>

### 製品の特性

製品の状態	Liquid
保存方法	Shipped at 4°C. Store at -20°C.
バッファー	pH: 7.20 Preservative: 0.02% Sodium azide Constituents: PBS, 40% Glycerol (glycerin, glycerine)
精製度	Immunogen affinity purified
ポリ/モノ	ポリクローナル
アイソタイプ	IgG

### アプリケーション

## The Abpromise guarantee

**Abpromise保証は、**次のテスト済みアプリケーションにおけるab121524の使用に適用されます

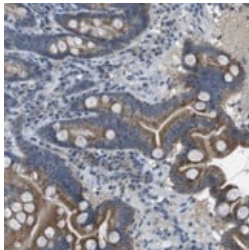
アプリケーションノートには、推奨の開始希釈率がありますが、適切な希釈率につきましてはご検討ください。

アプリケーション	Abreviews	特記事項
IHC-P		1/10 - 1/20. Perform heat mediated antigen retrieval with citrate buffer pH 6 before commencing with IHC staining protocol.

## ターゲット情報

機能	May be involved in mediating calcium-activated chloride conductance.
組織特異性	Primarily expressed in the digestive tract, mainly in colon. Detected in smaller amounts in brain, urogenital organs, testis, and salivary and mammary glands. Highly expressed in the epithelial layer and submucosal gland of the inferior turbinate mucosa. Lower levels in the epithelial layer of nasal polyp.
配列類似性	Belongs to the CLCR family. Contains 1 VWFA domain.
翻訳後修飾	Processed at a monobasic residue to yield a larger N-terminal and a smaller C-terminal cleavage products of 90 to 110 and 30 to 35 kDa, respectively.
細胞内局在	Cell membrane. Apical cell membrane. Secreted. The C-terminus 30 kDa form is anchored to the membrane (By similarity). The N-terminus 110 kDa form is released from the membrane triggered by an unknown stimulus.

## 画像



ab121524, at 1/10 dilution, staining human duodenum by immunohistochemistry on paraffin embedded tissues (IHC-P).

Immunohistochemistry (Formalin/PFA-fixed paraffin-embedded sections) - Anti-CLCA4 antibody (ab121524)

**Please note:** All products are "FOR RESEARCH USE ONLY. NOT FOR USE IN DIAGNOSTIC PROCEDURES"

## Our Abpromise to you: Quality guaranteed and expert technical support

- Replacement or refund for products not performing as stated on the datasheet
- Valid for 12 months from date of delivery
- Response to your inquiry within 24 hours

- We provide support in Chinese, English, French, German, Japanese and Spanish
- Extensive multi-media technical resources to help you
- We investigate all quality concerns to ensure our products perform to the highest standards

If the product does not perform as described on this datasheet, we will offer a refund or replacement. For full details of the Abpromise, please visit <https://www.abcam.co.jp/abpromise> or contact our technical team.

#### **Terms and conditions**

---

- Guarantee only valid for products bought direct from Abcam or one of our authorized distributors