

Anti-CIC-4 antibody ab75008

画像数 2

製品の概要

| | |
|--------------|---|
| 製品名 | Anti-CIC-4 antibody |
| 製品の詳細 | Rabbit polyclonal to CIC-4 |
| 由来種 | Rabbit |
| アプリケーション | 適用あり: WB, ICC/IF |
| 種交差性 | 交差種: Human 交差が予測される動物種: Mouse, Rat  |
| 免疫原 | Synthetic peptide corresponding to Human CIC-4 (internal sequence). |
| ポジティブ・コントロール | WB: Extracts from MCF-7 cells ICC/IF: HUVEC cells |
| 特記事項 | <p>The Life Science industry has been in the grips of a reproducibility crisis for a number of years. Abcam is leading the way in addressing this with our range of recombinant monoclonal antibodies and knockout edited cell lines for gold-standard validation. Please check that this product meets your needs before purchasing.</p> <p>If you have any questions, special requirements or concerns, please send us an inquiry and/or contact our Support team ahead of purchase. Recommended alternatives for this product can be found below, along with publications, customer reviews and Q&As</p> |

製品の特性

| | |
|-----------|--|
| 製品の状態 | Liquid |
| 保存方法 | Shipped at 4°C. Upon delivery aliquot and store at -20°C. Avoid freeze / thaw cycles. |
| バッファー | pH: 7.40 Preservative: 0.02% Sodium azide Constituents: 50% Glycerol (glycerin, glycerine), 0.87% Sodium chloride, PBS |
| 精製度 | Without Mg ²⁺ and Ca ²⁺ Immunogen affinity purified |
| 特記事項 (精製) | The antibody was affinity purified from rabbit antiserum by affinity chromatography using epitope specific immunogen. |
| ポリ/モノ | ポリクローナル |
| アイソタイプ | IgG |

アプリケーション

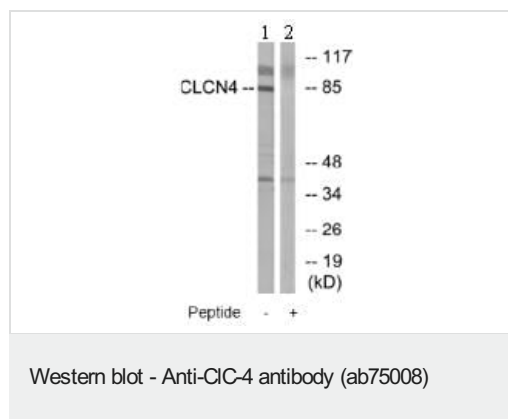
The Abpromise guarantee **Abpromise保証は、次のテスト済みアプリケーションにおけるab75008の使用に適用されます**
アプリケーションノートには、推奨の開始希釈率がありますが、適切な希釈率につきましてはご検討ください。

| アプリケーション | Abreviews | 特記事項 |
|----------|-----------|---|
| WB | | 1/500 - 1/1000. Predicted molecular weight: 85 kDa. |
| ICC/IF | | 1/500 - 1/1000. |

ターゲット情報

| | |
|-------|--|
| 機能 | Proton-coupled chloride transporter. Functions as antiport system and exchanges chloride ions against protons. |
| 組織特異性 | Abundant in skeletal muscle and also detectable in brain and heart. |
| 配列類似性 | Belongs to the chloride channel (TC 2.A.49) family. CIC-4/CLCN4 subfamily. Contains 2 CBS domains. |
| 細胞内局在 | Early endosome membrane. Late endosome membrane. |

画像



All lanes : Anti-CIC-4 antibody (ab75008) at 1/500 dilution

Lane 1 : extracts from MCF-7 cells

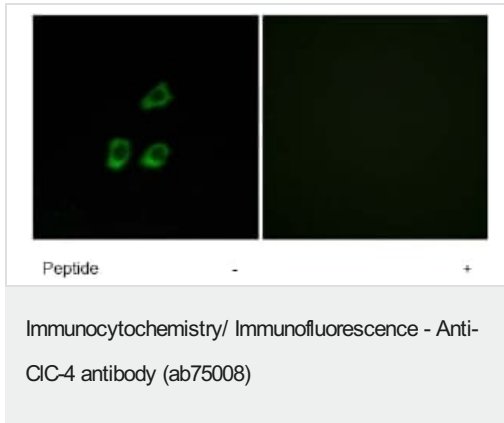
Lane 2 : extracts from MCF-7 cells with immunising peptide at 10 μ g

Lysates/proteins at 30 μ g per lane.

Predicted band size: 85 kDa

Observed band size: 85 kDa

Additional bands at: 100 kDa, 45 kDa. We are unsure as to the identity of these extra bands.



Immunofluorescence analysis of CIC-4 in HUVEC cells, using ab75008 at a 1/500 dilution with (right image) or without (left image) the immunising peptide.

Please note: All products are "FOR RESEARCH USE ONLY. NOT FOR USE IN DIAGNOSTIC PROCEDURES"

Our Abpromise to you: Quality guaranteed and expert technical support

- Replacement or refund for products not performing as stated on the datasheet
- Valid for 12 months from date of delivery
- Response to your inquiry within 24 hours
- We provide support in Chinese, English, French, German, Japanese and Spanish
- Extensive multi-media technical resources to help you
- We investigate all quality concerns to ensure our products perform to the highest standards

If the product does not perform as described on this datasheet, we will offer a refund or replacement. For full details of the Abpromise, please visit <https://www.abcam.co.jp/abpromise> or contact our technical team.

Terms and conditions

- Guarantee only valid for products bought direct from Abcam or one of our authorized distributors