

# Anti-Claudin 3 antibody ab52231

★★★★☆ [5 Abreviews](#) [6 References](#) [画像数 4](#)

### 製品の概要

---

製品名	Anti-Claudin 3 antibody
製品の詳細	Rabbit polyclonal to Claudin 3
由来種	Rabbit
アプリケーション	<b>適用あり:</b> ELISA, IP, WB, ICC/IF, IHC-P
種交差性	<b>交差種:</b> Human
免疫原	Synthetic peptide derived from within amino acids 181 and 220 of Human Claudin-3
特記事項	<p>The Life Science industry has been in the grips of a reproducibility crisis for a number of years. Abcam is leading the way in addressing this with our range of recombinant monoclonal antibodies and knockout edited cell lines for gold-standard validation. Please check that this product meets your needs before purchasing.</p> <p>If you have any questions, special requirements or concerns, please send us an inquiry and/or contact our Support team ahead of purchase. Recommended alternatives for this product can be found below, along with publications, customer reviews and Q&amp;As</p>

### 製品の特性

---

製品の状態	Liquid
保存方法	Shipped at 4°C. Store at -20°C. Stable for 12 months at -20°C.
バッファー	pH: 7.40 Preservative: 0.02% Sodium azide Constituents: PBS, 0.87% Sodium chloride, 50% Glycerol (glycerin, glycerine)
精製度	Immunogen affinity purified
ポリ/モノ	ポリクローナル
アイソタイプ	IgG

### アプリケーション

---

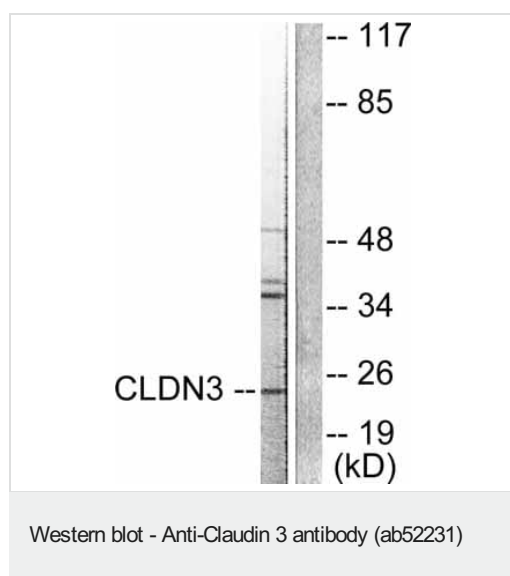
**The Abpromise guarantee** [Abpromise保証は、次のテスト済みアプリケーションにおけるab52231の使用に適用されます](#)  
アプリケーションノートには、推奨の開始希釈率がありますが、適切な希釈率につきましてはご検討ください。

アプリケーション	Abreviews	特記事項
ELISA		Use at an assay dependent concentration.
IP		Use at an assay dependent concentration.
WB	★★★★★ (5)	1/500 - 1/1000. Detects a band of approximately 23 kDa (predicted molecular weight: 23 kDa).
ICC/IF		Use a concentration of 5 µg/ml.
IHC-P		Use a concentration of 1 µg/ml. Perform heat mediated antigen retrieval with citrate buffer pH 6 before commencing with IHC staining protocol.

## ターゲット情報

機能	Plays a major role in tight junction-specific obliteration of the intercellular space, through calcium-independent cell-adhesion activity.
関連疾患	Note=CLDN3 is located in the Williams-Beuren syndrome (WBS) critical region. WBS results from a hemizygous deletion of several genes on chromosome 7q11.23, thought to arise as a consequence of unequal crossing over between highly homologous low-copy repeat sequences flanking the deleted region.
配列類似性	Belongs to the claudin family.
細胞内局在	Cell junction > tight junction. Cell membrane.

## 画像



**All lanes** : Anti-Claudin 3 antibody (ab52231) at 1/500 dilution

**Lane 1** : Extracts from HuvEc cells, untreated.

**Lane 2** : Extracts from HuvEc cells, treated with the immunizing peptide.

**Predicted band size:** 23 kDa

**Observed band size:** 23 kDa

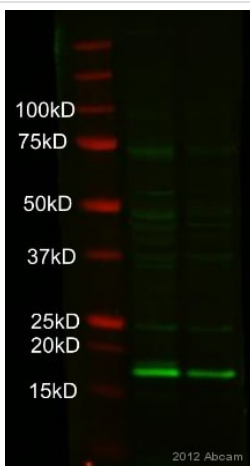
Immunohistochemistry (Formalin/PFA-fixed paraffin-embedded sections) - Anti-Claudin 3 antibody (ab52231)

IHC image of ab52231 staining in normal human colon formalin fixed paraffin embedded tissue section, performed on a Leica Bond™ system using the standard protocol F. The section was pre-treated using heat mediated antigen retrieval with sodium citrate buffer (pH6, epitope retrieval solution 1) for 20 mins. The section was then incubated with ab52231, 1µg/ml, for 15 mins at room temperature and detected using an HRP conjugated compact polymer system. DAB was used as the chromogen. The section was then counterstained with haematoxylin and mounted with DPX.

For other IHC staining systems (automated and non-automated) customers should optimize variable parameters such as antigen retrieval conditions, primary antibody concentration and antibody incubation times.

Immunocytochemistry/ Immunofluorescence - Anti-Claudin 3 antibody (ab52231)

ICC/IF image of ab52231 stained MCF7 cells. The cells were 4% formaldehyde fixed (10 min) and then incubated in 1%BSA / 10% normal goat serum / 0.3M glycine in 0.1% PBS-Tween for 1h to permeabilise the cells and block non-specific protein-protein interactions. The cells were then incubated with the antibody (ab52231, 5µg/ml) overnight at +4°C. The secondary antibody (green) was **ab96899**, DyLight® 488 goat anti-rabbit IgG (H+L) used at a 1/250 dilution for 1h. Alexa Fluor® 594 WGA was used to label plasma membranes (red) at a 1/200 dilution for 1h. DAPI was used to stain the cell nuclei (blue) at a concentration of 1.43µM.



Western blot - Anti-Claudin 3 antibody (ab52231)  
This image is courtesy of an anonymous Abreview

**All lanes** : Anti-Claudin 3 antibody (ab52231)

**Lane 1** : Human urothelial cells (differentiated)

**Lane 2** : Human urothelial cells (non-differentiated)

Lysates/proteins at 15 µg per lane.

#### Secondary

**All lanes** : IRDye® 800-conjugated Goat anti-rabbit IgG polyclonal

Developed using the ECL technique.

Performed under reducing conditions.

**Predicted band size:** 23 kDa

**Exposure time:** 2 minutes

Blocked with 0.1% Milk for 1 hour at 22°C

**Please note:** All products are "FOR RESEARCH USE ONLY. NOT FOR USE IN DIAGNOSTIC PROCEDURES"

### **Our Abpromise to you: Quality guaranteed and expert technical support**

---

- Replacement or refund for products not performing as stated on the datasheet
- Valid for 12 months from date of delivery
- Response to your inquiry within 24 hours
  
- We provide support in Chinese, English, French, German, Japanese and Spanish
- Extensive multi-media technical resources to help you
- We investigate all quality concerns to ensure our products perform to the highest standards

If the product does not perform as described on this datasheet, we will offer a refund or replacement. For full details of the Abpromise, please visit <https://www.abcam.co.jp/abpromise> or contact our technical team.

### **Terms and conditions**

---

- Guarantee only valid for products bought direct from Abcam or one of our authorized distributors