




Anti-Clathrin light chain antibody ab77542

1 References [画像数 1](#)

製品の概要

製品名	Anti-Clathrin light chain antibody
製品の詳細	Goat polyclonal to Clathrin light chain
由来種	Goat
特異性	Expected to recognize all reported isoforms of light chains a and b.
アプリケーション	適用あり: WB
種交差性	交差種: Human 交差が予測される動物種: Mouse, Rat, Horse, Chicken, Cow, Dog, Pig, Xenopus laevis, Chimpanzee, Zebrafish, Macaque monkey 
免疫原	Synthetic peptide: CDFNPKSSKQAKD from Human Clathrin light chain(NP_001824.1; NP_009027.1; NP_001070145.1; NP_001825.1; NP_009028.1) <div>  Run BLAST with  Run BLAST with </div>
ポジティブ・コントロール	Recombinant Human Clathrin light chain protein (ab126693) can be used as a positive control in WB. Human frontal cortex lysate
特記事項	<p>The Life Science industry has been in the grips of a reproducibility crisis for a number of years. Abcam is leading the way in addressing this with our range of recombinant monoclonal antibodies and knockout edited cell lines for gold-standard validation. Please check that this product meets your needs before purchasing.</p> <p>If you have any questions, special requirements or concerns, please send us an inquiry and/or contact our Support team ahead of purchase. Recommended alternatives for this product can be found below, along with publications, customer reviews and Q&As</p>

製品の特性

製品の状態	Liquid
保存方法	Shipped at 4°C. Upon delivery aliquot and store at -20°C or -80°C. Avoid repeated freeze / thaw cycles.
バッファー	pH: 7.30 Preservative: 0.02% Sodium azide Constituents: 0.5% BSA, Tris buffered saline

精製度	Immunogen affinity purified
特記事項 (精製)	Purified from goat serum by ammonium sulphate precipitation, followed by antigen affinity chromatography using the immunizing peptide.
ポリモノ	ポリクローナル
アイソタイプ	IgG

アプリケーション

The Abpromise guarantee Abpromise保証は、次のテスト済みアプリケーションにおけるab77542の使用に適用されます
 アプリケーションノートには、推奨の開始希釈率がありますが、適切な希釈率につきましてはご検討ください。

アプリケーション	Abreviews	特記事項
WB		

追加情報

ELISA: Use at an assay dependent dilution. Antibody detection limit dilution: 1/32000.
 WB: Use at a concentration of 0.1 - 0.3 µg/ml. Predicted molecular weight: 23 kDa.

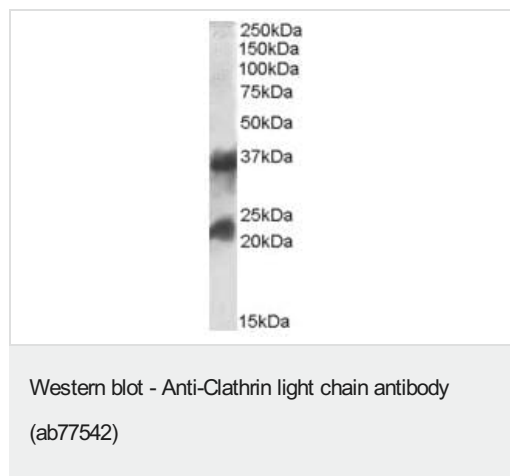
Not yet tested in other applications.
 Optimal dilutions/concentrations should be determined by the end user.

ターゲット情報

機能 Clathrin is the major protein of the polyhedral coat of coated pits and vesicles.

細胞内局在 Cytoplasmic vesicle membrane. Membrane > coated pit. Cytoplasmic face of coated pits and vesicles.

画像



Anti-Clathrin light chain antibody (ab77542) at 0.1 µg/ml + Human frontal cortex lysate in RIPA buffer at 35 µg

Predicted band size: 23 kDa

Observed band size: 23 kDa

Additional bands at: 35 kDa (possible isoform)

The observed molecular weight of ~35kDa corresponds to earlier findings in literature with different antibodies (Okamoto et al, Am J Physiol Cell Physiol. 2000 Sep;279(3):C833-51.; PMID: 10942733)

Please note: All products are "FOR RESEARCH USE ONLY. NOT FOR USE IN DIAGNOSTIC PROCEDURES"

Our Abpromise to you: Quality guaranteed and expert technical support

- Replacement or refund for products not performing as stated on the datasheet
- Valid for 12 months from date of delivery
- Response to your inquiry within 24 hours

- We provide support in Chinese, English, French, German, Japanese and Spanish
- Extensive multi-media technical resources to help you
- We investigate all quality concerns to ensure our products perform to the highest standards

If the product does not perform as described on this datasheet, we will offer a refund or replacement. For full details of the Abpromise, please visit <https://www.abcam.co.jp/abpromise> or contact our technical team.

Terms and conditions

- Guarantee only valid for products bought direct from Abcam or one of our authorized distributors