

Anti-Clathrin heavy chain antibody [TD.1] ab24578

9 References 画像数 1

医薬用外劇物

製品の概要

製品名	Anti-Clathrin heavy chain antibody [TD.1]
製品の詳細	Mouse monoclonal [TD.1] to Clathrin heavy chain
由来種	Mouse
特異性	This antibody reacts with clathrin heavy chains (CHC).
アプリケーション	適用あり: ICC/IF 適用なし: IP
種交差性	交差種: Human
免疫原	This antibody was raised using the globular N terminal domain of clathrin heavy chain.
ポジティブ・コントロール	Methanol fixed HeLa cells for IF.
特記事項	<p>The Life Science industry has been in the grips of a reproducibility crisis for a number of years. Abcam is leading the way in addressing this with our range of recombinant monoclonal antibodies and knockout edited cell lines for gold-standard validation. Please check that this product meets your needs before purchasing.</p> <p>If you have any questions, special requirements or concerns, please send us an inquiry and/or contact our Support team ahead of purchase. Recommended alternatives for this product can be found below, along with publications, customer reviews and Q&As</p>

製品の特性

製品の状態	Liquid
保存方法	Shipped at 4°C. Upon delivery aliquot and store at -20°C. Avoid freeze / thaw cycles.
バッファー	Preservative: 0.03% Thimerosal (merthiolate)
精製度	Protein G purified
ポリ/モノ	モノクローナル
クローン名	TD.1
アイソタイプ	IgG1
軽鎖の種類	kappa

アプリケーション

The Abpromise guarantee

Abpromise保証は、次のテスト済みアプリケーションにおけるab24578の使用に適用されます

アプリケーションノートには、推奨の開始希釈率がありますが、適切な希釈率につきましてはご確認ください。

アプリケーション	Abreviews	特記事項
ICC/IF		Use at an assay dependent concentration.

追加情報

Is unsuitable for IP.

ターゲット情報

機能

Clathrin is the major protein of the polyhedral coat of coated pits and vesicles. Two different adapter protein complexes link the clathrin lattice either to the plasma membrane or to the trans-Golgi network.

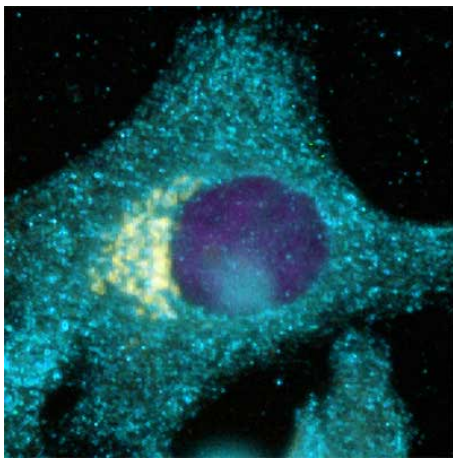
配列類似性

Belongs to the clathrin heavy chain family.

細胞内局在

Cytoplasmic vesicle membrane. Membrane > coated pit. Melanosome. Cytoplasmic face of coated pits and vesicles. Identified by mass spectrometry in melanosome fractions from stage I to stage IV.

画像



ab24578 at a 1/200 dilution staining clathrin triskelion (blue) throughout the methanol fixed HeLa cells by Immunocytochemistry/Immunofluorescence. The Golgi is brilliantly stained by Giantin (yellow). Secondary antibodies used were a goat anti-mouse alexafluor AF546 and a goat anti-rabbit alexafluor AF488 applied at 1 ug/mL. The DNA was visualized with DAPI at 1 ug/mL. The colors of this image were altered.

Immunocytochemistry/ Immunofluorescence - Anti-Clathrin heavy chain antibody [TD.1] (ab24578)

Please note: All products are "FOR RESEARCH USE ONLY. NOT FOR USE IN DIAGNOSTIC PROCEDURES"

Our Abpromise to you: Quality guaranteed and expert technical support

- Replacement or refund for products not performing as stated on the datasheet
- Valid for 12 months from date of delivery
- Response to your inquiry within 24 hours

- We provide support in Chinese, English, French, German, Japanese and Spanish
- Extensive multi-media technical resources to help you
- We investigate all quality concerns to ensure our products perform to the highest standards

If the product does not perform as described on this datasheet, we will offer a refund or replacement. For full details of the Abpromise, please visit <https://www.abcam.co.jp/abpromise> or contact our technical team.

Terms and conditions

- Guarantee only valid for products bought direct from Abcam or one of our authorized distributors