




### Anti-Clathrin heavy chain antibody ab59710

★★★★ 4 Abreviews 6 References 両俵数?

医薬用外劇物

#### 製品の概要

製品名	Anti-Clathrin heavy chain antibody
製品の詳細	Rabbit polyclonal to Clathrin heavy chain
由来種	Rabbit
アプリケーション	適用あり: IHC-P
種交差性	<p>交差が予測される動物種: Chicken, Cow, Xenopus laevis, Caenorhabditis elegans, Zebrafish, a wide range of other species </p>
免疫原	<p>Synthetic peptide corresponding to Rat Clathrin heavy chain aa 619-638.</p> <p>Sequence:</p> <p>KAGLLQRALEHFTDLYDIKR</p> <p> <a href="#">Run BLAST with</a>  <a href="#">Run BLAST with</a></p>
ポジティブ・コントロール	IHC-P: Non-ciliated bronchiolar cells (Clara cells).
特記事項	<p>The Life Science industry has been in the grips of a reproducibility crisis for a number of years. Abcam is leading the way in addressing this with our range of recombinant monoclonal antibodies and knockout edited cell lines for gold-standard validation. Please check that this product meets your needs before purchasing.</p> <p>If you have any questions, special requirements or concerns, please send us an inquiry and/or contact our Support team ahead of purchase. Recommended alternatives for this product can be found below, along with publications, customer reviews and Q&amp;As</p>

#### 製品の特性

製品の状態	Liquid
保存方法	Shipped at 4°C. Store at +4°C short term (1-2 weeks). Upon delivery aliquot. Store at -20°C or -80°C. Avoid freeze / thaw cycle.
バッファー	<p>Preservative: 0.02% Thimerosal (merthiolate)</p> <p>Constituent: Whole serum</p>
精製度	Whole antiserum
ポリ/モノ	ポリクローナル

## アプリケーション

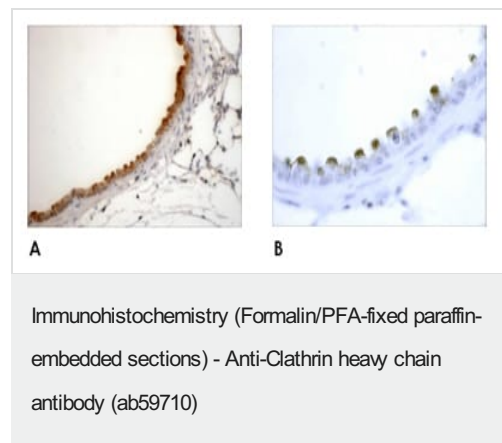
**The Abpromise guarantee** Abpromise保証は、 次のテスト済みアプリケーションにおけるab59710の使用に適用されます  
アプリケーションノートには、推奨の開始希釈率がありますが、適切な希釈率につきましてはご確認ください。

アプリケーション	Abreviews	特記事項
IHC-P		Use at an assay dependent concentration.

## ターゲット情報

機能	Clathrin is the major protein of the polyhedral coat of coated pits and vesicles. Two different adapter protein complexes link the clathrin lattice either to the plasma membrane or to the trans-Golgi network.
配列類似性	Belongs to the clathrin heavy chain family.
細胞内局在	Cytoplasmic vesicle membrane. Membrane > coated pit. Melanosome. Cytoplasmic face of coated pits and vesicles. Identified by mass spectrometry in melanosome fractions from stage I to stage IV.

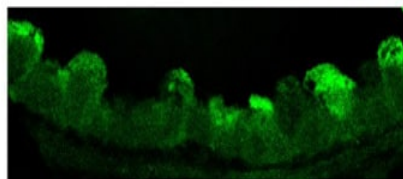
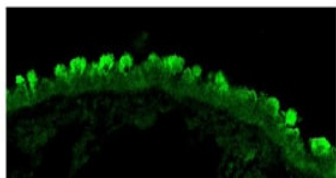
## 画像



ab59710 at 1/1000, overnight, secondary antibody biotinylated goat anti-sheep at 1/3000.

Figure A is a low power image showing intense staining of non-ciliated bronchiolar cells (Clara cells) and lesser staining in alveolar type II cells.

Figure B is a higher power image of the staining of the non ciliated bronchiolar cells.



Immunohistochemistry (Formalin/PFA-fixed paraffin-embedded sections) - Anti-Clathrin heavy chain antibody (ab59710)

ab59710 at 1/100, overnight, secondary antibody donkey anti-rabbit Cy2® at 1/50. Confocal image shows intense staining of non-ciliated bronchiolar cells (Clara cells).

**Please note:** All products are "FOR RESEARCH USE ONLY. NOT FOR USE IN DIAGNOSTIC PROCEDURES"

#### Our Abpromise to you: Quality guaranteed and expert technical support

---

- Replacement or refund for products not performing as stated on the datasheet
- Valid for 12 months from date of delivery
- Response to your inquiry within 24 hours
- We provide support in Chinese, English, French, German, Japanese and Spanish
- Extensive multi-media technical resources to help you
- We investigate all quality concerns to ensure our products perform to the highest standards

If the product does not perform as described on this datasheet, we will offer a refund or replacement. For full details of the Abpromise, please visit <https://www.abcam.co.jp/abpromise> or contact our technical team.

#### Terms and conditions

---

- Guarantee only valid for products bought direct from Abcam or one of our authorized distributors