


Anti-Clathrin heavy chain antibody ab21679

★★★★★ [38 Abreviews](#) [130 References](#) [画像数 5](#)

製品の概要

製品名	Anti-Clathrin heavy chain antibody
製品の詳細	Rabbit polyclonal to Clathrin heavy chain
由来種	Rabbit
特異性	Replenishment batches of our polyclonal antibody, ab21679 are tested in WB. Previous batches were additionally validated in ICC/IF. This application is still expected to work and is covered by our Abpromise guarantee. You may also be interested in our alternative recombinant antibody, ab172958 .
アプリケーション	適用あり: WB, ICC/IF
種交差性	交差種: Mouse, Rat, Human 交差が予測される動物種: Chicken, Hamster 
免疫原	Synthetic peptide conjugated to KLH derived from within residues 1650 to the C-terminus of Human Clathrin heavy chain. Immunogen の所有権に関して (Peptide available as ab23440 .)
特記事項	<p>The Life Science industry has been in the grips of a reproducibility crisis for a number of years. Abcam is leading the way in addressing this with our range of recombinant monoclonal antibodies and knockout edited cell lines for gold-standard validation. Please check that this product meets your needs before purchasing.</p> <p>If you have any questions, special requirements or concerns, please send us an inquiry and/or contact our Support team ahead of purchase. Recommended alternatives for this product can be found below, along with publications, customer reviews and Q&As</p>

製品の特性

製品の状態	Liquid
保存方法	Shipped at 4°C. Store at +4°C short term (1-2 weeks). Upon delivery aliquot. Store at -20°C or -80°C. Avoid freeze / thaw cycle.
バッファー	pH: 7.40 Preservative: 0.02% Sodium azide Constituents: PBS, 1% BSA
	Batches of this product that have a concentration < 1mg/ml may have BSA added as a stabilising agent. If you would like information about the formulation of a specific lot, please contact our scientific support team who will be happy to help.

精製度	Immunogen affinity purified
ポリ/モノ	ポリクローナル
アイソタイプ	IgG

アプリケーション

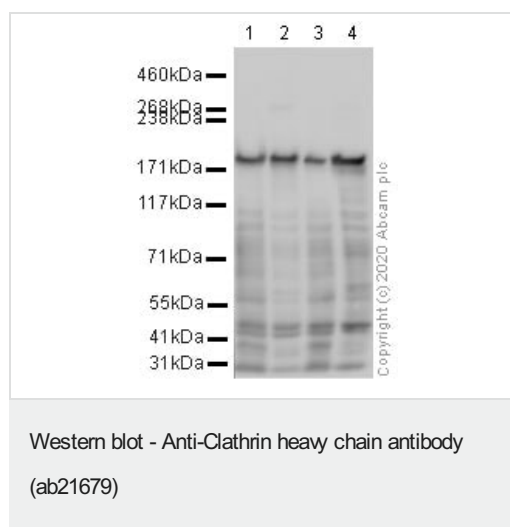
The Abpromise guarantee Abpromise保証は、次のテスト済みアプリケーションにおけるab21679の使用に適用されず
 アプリケーションノートには、推奨の開始希釈率がありますが、適切な希釈率につきましてはご検討ください。

アプリケーション	Abreviews	特記事項
WB	★★★★★ (13)	Use a concentration of 1 µg/ml. Detects a band of approximately 180 kDa (predicted molecular weight: 180 kDa).
ICC/IF	★★★★★ (19)	Use a concentration of 1 µg/ml.

ターゲット情報

機能	Clathrin is the major protein of the polyhedral coat of coated pits and vesicles. Two different adapter protein complexes link the clathrin lattice either to the plasma membrane or to the trans-Golgi network.
配列類似性	Belongs to the clathrin heavy chain family.
細胞内局在	Cytoplasmic vesicle membrane. Membrane > coated pit. Melanosome. Cytoplasmic face of coated pits and vesicles. Identified by mass spectrometry in melanosome fractions from stage I to stage IV.

画像



All lanes : Anti-Clathrin heavy chain antibody (ab21679) at 1 µg/ml

Lane 1 : HeLa whole cell lysate

Lane 2 : A431 whole cell lysate

Lane 3 : NIH 3T3 whole cell lysate

Lane 4 : PC12 whole cell lysate

Lysates/proteins at 10 µg per lane.

Secondary

All lanes : Goat polyclonal to Rabbit IgG - H&L - Pre-Adsorbed (HRP) at 1/50000 dilution

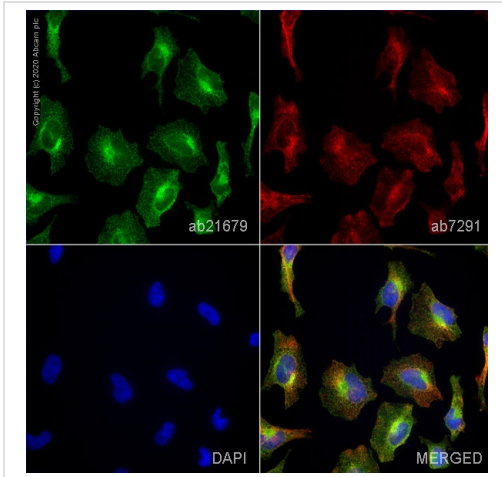
Predicted band size: 180 kDa

Observed band size: 180 kDa

Blocking buffer: 2% BSA

Gel type: TA

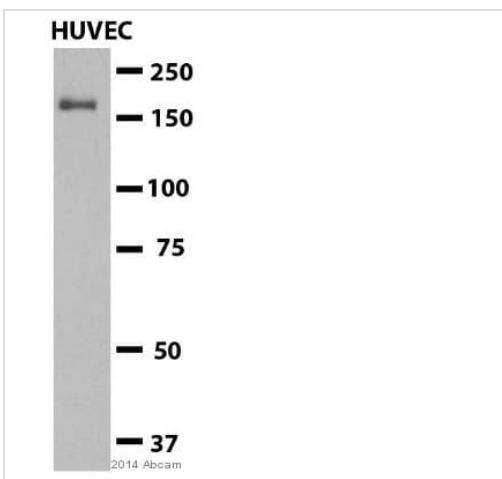
Exposure Time: 1 minute



Immunocytochemistry/ Immunofluorescence - Anti-Clathrin heavy chain antibody (ab21679)

ab21679 staining Clathrin heavy chain in HeLa cells. The cells were fixed with 4% paraformaldehyde (10 min), permeabilized with 0.1% PBS-Tween for 5 minutes and then blocked with 1% BSA/10% normal goat serum/0.3M glycine in 0.1%PBS-Tween for 1h. The cells were then incubated overnight at 4°C with ab21679 at 1µg/ml and **ab7291**, Mouse monoclonal [DM1A] to alpha Tubulin - Loading Control. Cells were then incubated with **ab150081**, Goat polyclonal Secondary Antibody to Rabbit IgG - H&L (Alexa Fluor® 488), pre-adsorbed at 1/1000 dilution (shown in green) and **ab150120**, Goat polyclonal Secondary Antibody to Mouse IgG - H&L (Alexa Fluor® 594), pre-adsorbed at 1/1000 dilution (shown in pseudocolour red). Nuclear DNA was labelled with DAPI (shown in blue).

Image was acquired with a high-content analyser (Operetta CLS, Perkin Elmer) and a maximum intensity projection of confocal sections is shown.



Western blot - Anti-Clathrin heavy chain antibody (ab21679)

This image is courtesy of an anonymous Abreview

Anti-Clathrin heavy chain antibody (ab21679) at 1/1000 dilution + HUVEC cell lysate at 20 µg

Secondary

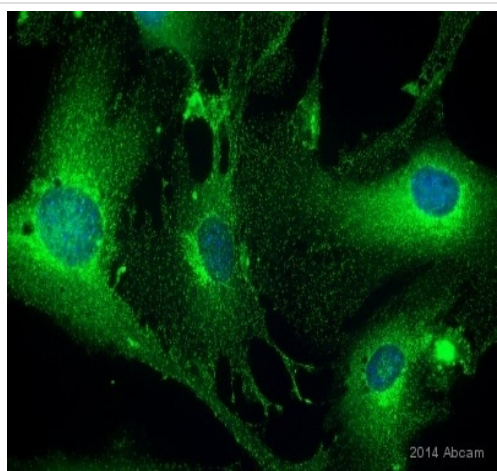
HRP conjugated goat anti-rabbit IgG at 1/10000 dilution

Developed using the ECL technique.

Performed under reducing conditions.

Predicted band size: 180 kDa

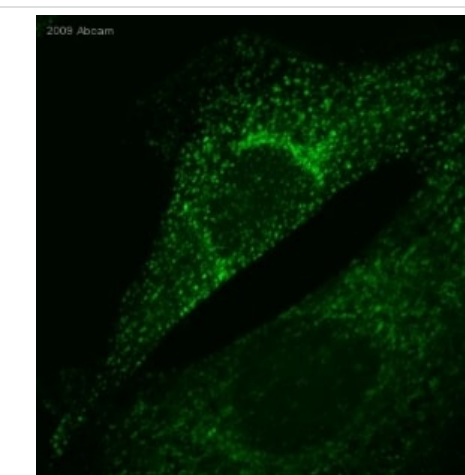
Exposure time: 5 seconds



Immunocytochemistry/ Immunofluorescence - Anti-Clathrin heavy chain antibody (ab21679)

This image is courtesy of an anonymous Abreview

Immunocytochemical analysis of mouse bEnd.3 labeling Clathrin heavy chain with ab21679 at 1/300 dilution using secondary anti-rabbit-alex fluor 488 at 1/500 dilution.



Immunocytochemistry/ Immunofluorescence - Anti-Clathrin heavy chain antibody (ab21679)

This image is a courtesy of Anonymous Abreview

ab21679 staining Clathrin heavy chain in mouse embryonic fibroblasts by Immunocytochemistry/ Immunofluorescence. Cells were fixed with paraformaldehyde and permeabilized with -20°C ethanol. Samples were incubated with primary antibody at 1/500 dilution (in 0.1% Saponin/1% BSA/PBS) for 1 hour. An Alexa Fluor[®] 546-conjugated goat polyclonal to rabbit IgG (H+L) was used as secondary antibody at 1/500 dilution. Green color in image show positive staining with Alexa Fluor[®] 546 conjugated secondary.

Please note: All products are "FOR RESEARCH USE ONLY. NOT FOR USE IN DIAGNOSTIC PROCEDURES"

Our Abpromise to you: Quality guaranteed and expert technical support

- Replacement or refund for products not performing as stated on the datasheet
- Valid for 12 months from date of delivery
- Response to your inquiry within 24 hours

- We provide support in Chinese, English, French, German, Japanese and Spanish
- Extensive multi-media technical resources to help you
- We investigate all quality concerns to ensure our products perform to the highest standards

If the product does not perform as described on this datasheet, we will offer a refund or replacement. For full details of the Abpromise, please visit <https://www.abcam.co.jp/abpromise> or contact our technical team.

Terms and conditions

- Guarantee only valid for products bought direct from Abcam or one of our authorized distributors