


Anti-Claspin antibody ab3721

1 References [画像数 2](#)

製品の概要

製品名	Anti-Claspin antibody
製品の詳細	Rabbit polyclonal to Claspin
由来種	Rabbit
アプリケーション	適用あり: WB, IP
種交差性	交差種: Human 交差が予測される動物種: Chimpanzee, Gorilla 
免疫原	Synthetic peptide (Human) - which represents a portion of human Claspin encoded within exon 15.
ポジティブ・コントロール	HeLa cell lysate.
特記事項	<p>The Life Science industry has been in the grips of a reproducibility crisis for a number of years. Abcam is leading the way in addressing this with our range of recombinant monoclonal antibodies and knockout edited cell lines for gold-standard validation. Please check that this product meets your needs before purchasing.</p> <p>If you have any questions, special requirements or concerns, please send us an inquiry and/or contact our Support team ahead of purchase. Recommended alternatives for this product can be found below, along with publications, customer reviews and Q&As</p>

製品の特性

製品の状態	Liquid
保存方法	Shipped at 4°C. Upon delivery aliquot and store at -20°C. Avoid freeze / thaw cycles.
バッファー	pH: 7 Preservative: 0.1% Sodium azide Constituents: 0.021% PBS, 1.764% Sodium citrate, 1.815% Tris
精製度	Immunogen affinity purified
ポリ/モノ	ポリクローナル
アイソタイプ	IgG

アプリケーション

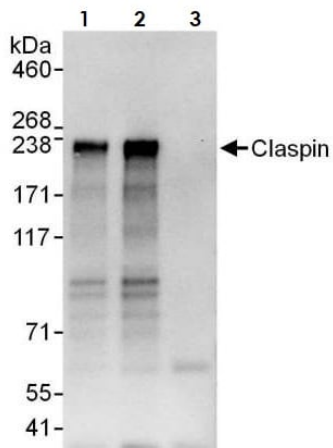
The Abpromise guarantee Abpromise保証は、 次のテスト済みアプリケーションにおけるab3721の使用に適用されます
 アプリケーションノートには、推奨の開始希釈率がありますが、適切な希釈率につきましてはご検討ください。

アプリケーション	Abreviews	特記事項
WB		1/1000 - 1/10000. Detects a band of approximately 180 kDa (predicted molecular weight: 150 kDa).
IP		Use at 2-10 µg/mg of lysate.

ターゲット情報

機能	Required for checkpoint mediated cell cycle arrest in response to inhibition of DNA replication or to DNA damage induced by both ionizing and UV irradiation. Adapter protein which binds to BRCA1 and the checkpoint kinase CHEK1 and facilitates the ATR-dependent phosphorylation of both proteins. Can also bind specifically to branched DNA structures and may associate with S-phase chromatin following formation of the pre-replication complex (pre-RC). This may indicate a role for this protein as a sensor which monitors the integrity of DNA replication forks.
配列類似性	Belongs to the claspin family.
ドメイン	The C-terminus of the protein contains 3 potential CHEK1-binding motifs (CKB motifs). Potential phosphorylation sites within CKB motif 1 and CKB motif 2 are required for interaction with CHEK1.
翻訳後修飾	Phosphorylated. Undergoes ATR-dependent phosphorylation by CHEK1 during activation of DNA replication or damage checkpoints. Phosphorylation by CSNK1G1/CK1 promotes CHEK1 binding. Ubiquitinated by the anaphase promoting complex/cyclosome (APC/C) during G1 phase, leading to its degradation by the proteasome. Ubiquitination is mediated via its interaction with FZR1/CDH1. Following DNA damage, it is deubiquitinated by USP28 in G2 phase, preventing its degradation.
細胞内局在	Nucleus.

画像



Immunoprecipitation - Anti-Claspin antibody
(ab3721)

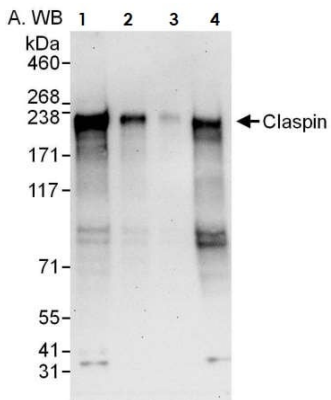
Claspin was immunoprecipitated from HeLa whole cell lysate (1 mg per IP reaction, 20% loaded) with ab3721 at 6 µg per reaction. Western blot was performed on the immunoprecipitate using ab3721 at 0.1 µg/mL.

Lane 1: ab3721 IP in HeLa whole cell lysate.

Lane 2: ab3721 IP in HeLa whole cell lysate.

Lane 3: Control IgG in HeLa whole cell lysate.

Detection: Chemiluminescence with an exposure time of 10 seconds



Western blot - Anti-Claspin antibody (ab3721)

All lanes : Anti-Claspin antibody (ab3721) at 0.1 µg/ml

Lane 1 : HeLa whole cell lysate at 50 µg

Lane 2 : HeLa whole cell lysate at 15 µg

Lane 3 : HeLa whole cell lysate at 5 µg

Lane 4 : HEK293T whole cell lysate at 50 µg

Predicted band size: 150 kDa

Exposure time: 30 seconds

Please note: All products are "FOR RESEARCH USE ONLY. NOT FOR USE IN DIAGNOSTIC PROCEDURES"

Our Abpromise to you: Quality guaranteed and expert technical support

- Replacement or refund for products not performing as stated on the datasheet
- Valid for 12 months from date of delivery
- Response to your inquiry within 24 hours
- We provide support in Chinese, English, French, German, Japanese and Spanish
- Extensive multi-media technical resources to help you
- We investigate all quality concerns to ensure our products perform to the highest standards

If the product does not perform as described on this datasheet, we will offer a refund or replacement. For full details of the Abpromise, please visit <https://www.abcam.co.jp/abpromise> or contact our technical team.

Terms and conditions

- Guarantee only valid for products bought direct from Abcam or one of our authorized distributors