

Anti-CKS1 antibody ab72639

3 References [画像数 2](#)

製品の概要

製品名	Anti-CKS1 antibody
製品の詳細	Rabbit polyclonal to CKS1
由来種	Rabbit
アプリケーション	適用あり: WB, ICC/IF
種交差性	交差種: Human 交差が予測される動物種: Mouse 
免疫原	Synthetic peptide derived from the N terminus of human CKS1.
ポジティブ・コントロール	Extracts from Jurkat cells, treated with serum (20%, 15mins). HeLa cells.
特記事項	<p>The Life Science industry has been in the grips of a reproducibility crisis for a number of years. Abcam is leading the way in addressing this with our range of recombinant monoclonal antibodies and knockout edited cell lines for gold-standard validation. Please check that this product meets your needs before purchasing.</p> <p>If you have any questions, special requirements or concerns, please send us an inquiry and/or contact our Support team ahead of purchase. Recommended alternatives for this product can be found below, along with publications, customer reviews and Q&As</p>

製品の特性

製品の状態	Liquid
保存方法	Shipped at 4°C. Store at -20°C. Stable for 12 months at -20°C.
バッファー	<p>pH: 7.40</p> <p>Preservative: 0.02% Sodium azide</p> <p>Constituents: 50% Glycerol (glycerin, glycerine), 0.87% Sodium chloride, PBS</p>
精製度	Without Mg ²⁺ and Ca ²⁺
ポリ/モノ	ポリクローナル
アイソタイプ	IgG

アプリケーション

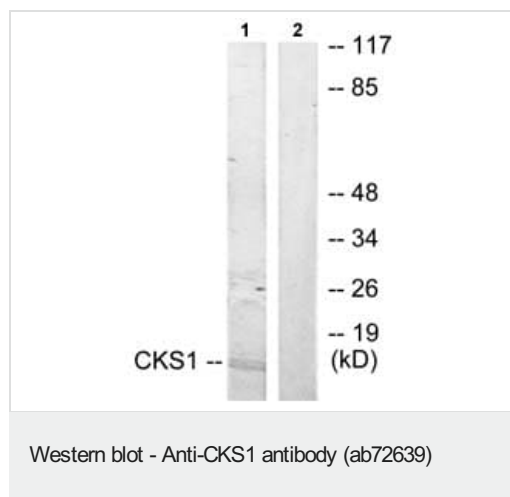
The Abpromise guarantee **Abpromise保証は、**次のテスト済みアプリケーションにおけるab72639の使用に適用されます
 アプリケーションノートには、推奨の開始希釈率がありますが、適切な希釈率につきましてはご検討ください。

アプリケーション	Abreviews	特記事項
WB		1/500 - 1/1000. Detects a band of approximately <19 kDa (predicted molecular weight: 10 kDa).
ICC/IF		1/500 - 1/1000.

ターゲット情報

機能	Binds to the catalytic subunit of the cyclin dependent kinases and is essential for their biological function.
配列類似性	Belongs to the CKS family.

画像



All lanes : Anti-CKS1 antibody (ab72639) at 1/500 dilution

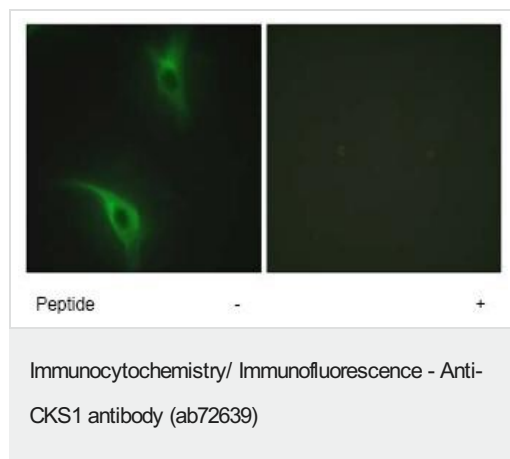
Lane 1 : Extracts from Jurkat cells, treated with serum (20%, 15mins)

Lane 2 : Extracts from Jurkat cells, treated with serum (20%, 15mins) with immunising peptide at 5 µg

Lysates/proteins at 5 µg per lane.

Predicted band size: 10 kDa

Observed band size: <19 kDa



ab72639, at 1/500 dilution, staining CKS1 in HeLa cells by Immunofluorescence in the absence or presence of the immunising peptide.

Please note: All products are "FOR RESEARCH USE ONLY. NOT FOR USE IN DIAGNOSTIC PROCEDURES"

Our Abpromise to you: Quality guaranteed and expert technical support

- Replacement or refund for products not performing as stated on the datasheet
- Valid for 12 months from date of delivery
- Response to your inquiry within 24 hours
- We provide support in Chinese, English, French, German, Japanese and Spanish
- Extensive multi-media technical resources to help you
- We investigate all quality concerns to ensure our products perform to the highest standards

If the product does not perform as described on this datasheet, we will offer a refund or replacement. For full details of the Abpromise, please visit <https://www.abcam.co.jp/abpromise> or contact our technical team.

Terms and conditions

- Guarantee only valid for products bought direct from Abcam or one of our authorized distributors