

Anti-CIP2A antibody ab84547

★★★★★ **1 Abreviews** **10 References** 画像数 3

製品の概要

製品名	Anti-CIP2A antibody
製品の詳細	Rabbit polyclonal to CIP2A
由来種	Rabbit
アプリケーション	適用あり: IHC-P
種交差性	交差種: Human
免疫原	Synthetic peptide within Human CIP2A aa 550-650. The exact immunogen sequence used to generate this antibody is proprietary information. If additional detail on the immunogen is needed to determine the suitability of the antibody for your needs, please contact our Scientific Support team to discuss your requirements. Database link: Q8TCG1
ポジティブ・コントロール	IHC-P: Human colon carcinoma. Human ovarian carcinoma.
特記事項	Concentration is optimized for IHC and not determined. The Life Science industry has been in the grips of a reproducibility crisis for a number of years. Abcam is leading the way in addressing this with our range of recombinant monoclonal antibodies and knockout edited cell lines for gold-standard validation. Please check that this product meets your needs before purchasing. If you have any questions, special requirements or concerns, please send us an inquiry and/or contact our Support team ahead of purchase. Recommended alternatives for this product can be found below, along with publications, customer reviews and Q&As

製品の特性

製品の状態	Liquid
保存方法	Shipped at 4°C. Upon delivery aliquot and store at -20°C. Avoid freeze / thaw cycles.
バッファー	pH: 6.8 Preservative: 0.09% Sodium azide Constituents: 0.1% BSA, Tris buffered saline
精製度	Immunogen affinity purified
ポリ/モノ	ポリクローナル
アイソタイプ	IgG

アプリケーション

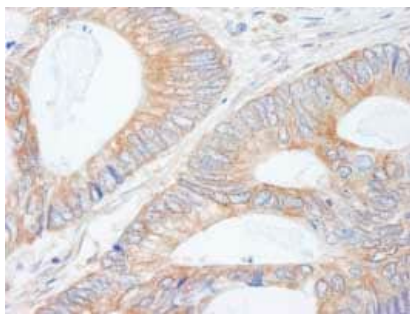
The Abpromise guarantee **Abpromise保証は、次のテスト済みアプリケーションにおけるab84547の使用に適用されます**
アプリケーションノートには、推奨の開始希釈率がありますが、適切な希釈率につきましてはご検討ください。

アプリケーション	Abreviews	特記事項
IHC-P	★★★★★ (1)	1/100 - 1/500. Perform heat mediated antigen retrieval with citrate buffer pH 6 before commencing with IHC staining protocol.

ターゲット情報

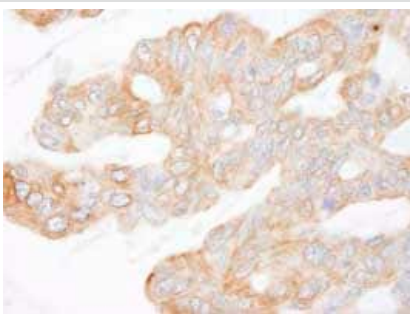
機能	Oncoprotein that inhibits PP2A and stabilizes MYC in human malignancies. Promotes anchorage-independent cell growth and tumor formation.
組織特異性	Expressed at low levels in most of the tissues. Overexpressed in head-and-neck squamous cell carcinomas (HNSCC). Present in liver cancer cells (at protein level).
細胞内局在	Membrane. Cytoplasm. Slightly concentrates in the perinuclear region.

画像



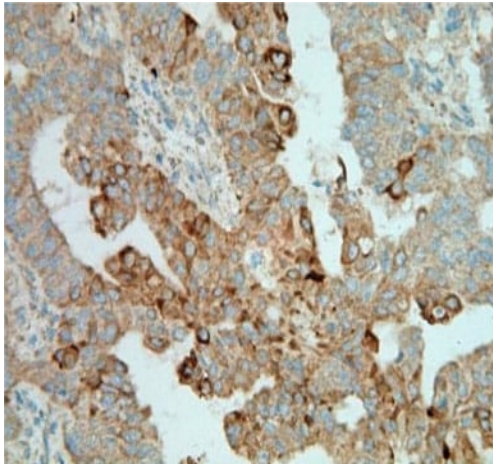
Immunohistochemistry (Formalin/PFA-fixed paraffin-embedded sections) - Anti-CIP2A antibody (ab84547)

Detection of Human CIP2A by Immunohistochemistry. Sample: FFPE section of Human colon carcinoma. Antibody: ab84547 used at a dilution of 1/250. Detection: DAB staining.



Immunohistochemistry (Formalin/PFA-fixed paraffin-embedded sections) - Anti-CIP2A antibody (ab84547)

Detection of Human CIP2A by Immunohistochemistry. Sample: FFPE section of Human ovarian carcinoma. Antibody: ab84547 used at a dilution of 1/250. Detection: DAB staining.



Immunohistochemical analysis of Human breast tumour tissue, staining CIP2A with ab84547 at 1/100 dilution.

Immunohistochemistry (Formalin/PFA-fixed paraffin-embedded sections) - Anti-CIP2A antibody (ab84547)

Image from Tseng LM et al., Breast Cancer Res. 2012 Apr 26;14(2):R68 Fig 6.; doi:10.1186/bcr3175; 26 April 2012, Breast Cancer Research 2012, 14:R68

Please note: All products are "FOR RESEARCH USE ONLY. NOT FOR USE IN DIAGNOSTIC PROCEDURES"

Our Abpromise to you: Quality guaranteed and expert technical support

- Replacement or refund for products not performing as stated on the datasheet
- Valid for 12 months from date of delivery
- Response to your inquiry within 24 hours
- We provide support in Chinese, English, French, German, Japanese and Spanish
- Extensive multi-media technical resources to help you
- We investigate all quality concerns to ensure our products perform to the highest standards

If the product does not perform as described on this datasheet, we will offer a refund or replacement. For full details of the Abpromise, please visit <https://www.abcam.co.jp/abpromise> or contact our technical team.

Terms and conditions

- Guarantee only valid for products bought direct from Abcam or one of our authorized distributors