

Anti-CIDE A antibody ab8402

[10 References](#) [画像数 2](#)

製品の概要

製品名	Anti-CIDE A antibody
製品の詳細	Rabbit polyclonal to CIDE A
由来種	Rabbit
特異性	Does not recognise CIDE-B.
アプリケーション	適用あり: WB, ICC/IF
種交差性	交差種: Mouse
免疫原	Synthetic peptide corresponding to Mouse CIDE A. The antibody was raised against an 18 amino acid peptide within the last 50 amino acids of mouse CIDE A. Database link: O70302 (Peptide available as ab8434)
ポジティブ・コントロール	WB: Mouse heart tissue lysate.
特記事項	<p>The Life Science industry has been in the grips of a reproducibility crisis for a number of years. Abcam is leading the way in addressing this with our range of recombinant monoclonal antibodies and knockout edited cell lines for gold-standard validation. Please check that this product meets your needs before purchasing.</p> <p>If you have any questions, special requirements or concerns, please send us an inquiry and/or contact our Support team ahead of purchase. Recommended alternatives for this product can be found below, along with publications, customer reviews and Q&As</p>

製品の特性

製品の状態	Liquid
保存方法	Shipped at 4°C. Store at +4°C short term (1-2 weeks). Store at +4°C.
バッファー	pH: 7.2 Preservative: 0.02% Sodium azide
精製度	Affinity purified
ポリ/モノ	ポリクローナル
アイソタイプ	IgG
軽鎖の種類	unknown

アプリケーション

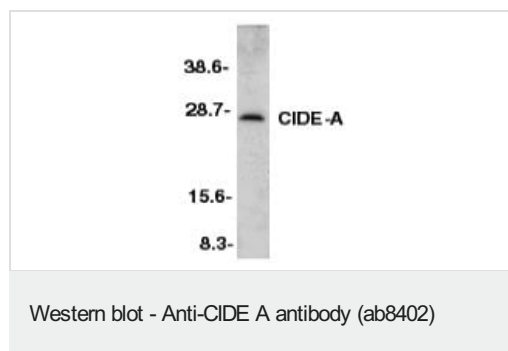
The Abpromise guarantee **Abpromise保証は、次のテスト済みアプリケーションにおけるab8402の使用に適用されます**
アプリケーションノートには、推奨の開始希釈率がありますが、適切な希釈率につきましてはご検討ください。

アプリケーション	Abreviews	特記事項
WB		1/500. Predicted molecular weight: 25 kDa.
ICC/IF		Use a concentration of 20 µg/ml.

ターゲット情報

機能	Acts as a CEBPB coactivator in mammary epithelial cells to control the expression of a subset of CEBPB downstream target genes, including ID2, IGF1, PRLR, SOCS1, SOCS3, XDH, but not casein. By interacting with CEBPB, strengthens the association of CEBPB with the XDH promoter, increases histone acetylation and dissociates HDAC1 from the promoter (By similarity). Binds to lipid droplets and regulates their enlargement, thereby restricting lipolysis and favoring storage. At focal contact sites between lipid droplets, promotes directional net neutral lipid transfer from the smaller to larger lipid droplets. The transfer direction may be driven by the internal pressure difference between the contacting lipid droplet pair and occurs at a lower rate than that promoted by CIDEC. When overexpressed, induces apoptosis. The physiological significance of its role in apoptosis is unclear.
組織特異性	Expressed in omental and subcutaneous adipose tissue (at protein level).
関連疾患	In omental and subcutaneous adipose tissue of obese patients matched for BMI, expression levels correlate with insulin sensitivity. Expression is increased 5-6 fold in the group of patients with high insulin sensitivity, compared to the insulin-resistant group. This observation is consistent with the idea that triglyceride storage in adipocytes plays an important role in sequestering triglycerides and fatty acids away from the circulation and peripheral tissues, thus enhancing insulin sensitivity in liver and muscle.
配列類似性	Contains 1 CIDE-N domain.
細胞内局在	Lipid droplet. Nucleus. Enriched at lipid droplet contact sites. Has been shown to localize to mitochondria, where it could interact with UCP1 and hence inhibit UCP1 uncoupling activity (By similarity). These data could not be confirmed (PubMed:18509062).

画像



Anti-CIDE A antibody (ab8402) at 1/500 dilution + Murine heart tissue lysate

Predicted band size: 25 kDa

Immunocytochemistry/ Immunofluorescence - Anti-CIDE A antibody (ab8402)

Immunofluorescence of CIDE-A in Mouse Heart cells using ab8402 at 20 ug/ml.

Please note: All products are "FOR RESEARCH USE ONLY. NOT FOR USE IN DIAGNOSTIC PROCEDURES"

Our Abpromise to you: Quality guaranteed and expert technical support

- Replacement or refund for products not performing as stated on the datasheet
- Valid for 12 months from date of delivery
- Response to your inquiry within 24 hours
- We provide support in Chinese, English, French, German, Japanese and Spanish
- Extensive multi-media technical resources to help you
- We investigate all quality concerns to ensure our products perform to the highest standards

If the product does not perform as described on this datasheet, we will offer a refund or replacement. For full details of the Abpromise, please visit <https://www.abcam.co.jp/abpromise> or contact our technical team.

Terms and conditions

- Guarantee only valid for products bought direct from Abcam or one of our authorized distributors