

# Anti-Chromogranin A antibody [SP12] ab16693

RabMAb

## 1 References [画像数 1](#)

### 製品の概要

---

製品名	Anti-Chromogranin A antibody [SP12]
製品の詳細	Rabbit monoclonal [SP12] to Chromogranin A
由来種	Rabbit
アプリケーション	<b>適用あり:</b> IHC-P
種交差性	<b>交差種:</b> Human
免疫原	Recombinant fragment within Human Chromogranin A. The exact sequence is proprietary.
ポジティブ・コントロール	Human pancreas
特記事項	<b>This product is FOR RESEARCH USE ONLY. For commercial use, please contact <a href="mailto:partnerships@abcam.com">partnerships@abcam.com</a>.</b>

The Life Science industry has been in the grips of a reproducibility crisis for a number of years. Abcam is leading the way in addressing this with our range of recombinant monoclonal antibodies and knockout edited cell lines for gold-standard validation. Please check that this product meets your needs before purchasing.

If you have any questions, special requirements or concerns, please send us an inquiry and/or contact our Support team ahead of purchase. Recommended alternatives for this product can be found below, along with publications, customer reviews and Q&As

### 製品の特性

---

製品の状態	Liquid
保存方法	Shipped at 4°C. Upon delivery aliquot and store at -20°C. Avoid freeze / thaw cycles.
バッファー	pH: 7.50 Preservative: 0.1% Sodium azide Constituents: Tissue culture supernatant, Tris buffered saline, 1% BSA
精製度	Tissue culture supernatant
ポリ/モノ	モノクローナル
クローン名	SP12
アイソタイプ	IgG

## アプリケーション

**The Abpromise guarantee** **Abpromise保証は、次のテスト済みアプリケーションにおけるab16693の使用に適用されます**  
アプリケーションノートには、推奨の開始希釈率がありますが、適切な希釈率につきましてはご検討ください。

アプリケーション	Abreviews	特記事項
IHC-P		

### 追加情報

IHC-P: 1/100 for 10 min at room temperature. Perform heat mediated antigen retrieval by boiling tissue sections in 10mM citrate buffer pH 6.0 for 10 min and then cool at room temperature for 20 min before commencing with IHC staining protocol.

Not yet tested in other applications.

Optimal dilutions/concentrations should be determined by the end user.

## ターゲット情報

**機能** Pancreastatin strongly inhibits glucose induced insulin release from the pancreas.

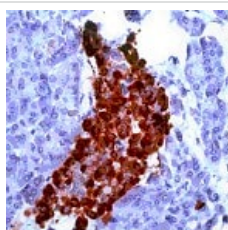
**配列類似性** Belongs to the chromogranin/secretogranin protein family.

**翻訳後修飾** Sulfated on tyrosine residues and/or contains sulfated glycans.  
O-glycosylated with core 1 or possibly core 8 glycans.

**細胞内局在** Secreted. Neuroendocrine and endocrine secretory granules.

**製品の状態** According to the Swiss-Prot database, this protein has many different forms which correspond to various molecular weights; thus the possible variation from the predicted molecular weight of 51kDa.

## 画像



Paraffin embedded formalin fixed human pancreas stained with anti Chromogranin A antibody ab16693 at 1/100 dilution.

Immunohistochemistry (Formalin/PFA-fixed paraffin-embedded sections) - Anti-Chromogranin A antibody [SP12] (ab16693)

**Please note:** All products are "FOR RESEARCH USE ONLY. NOT FOR USE IN DIAGNOSTIC PROCEDURES"

## Our Abpromise to you: Quality guaranteed and expert technical support

- Replacement or refund for products not performing as stated on the datasheet

- Valid for 12 months from date of delivery
- Response to your inquiry within 24 hours
  
- We provide support in Chinese, English, French, German, Japanese and Spanish
- Extensive multi-media technical resources to help you
- We investigate all quality concerns to ensure our products perform to the highest standards

If the product does not perform as described on this datasheet, we will offer a refund or replacement. For full details of the Abpromise, please visit <https://www.abcam.co.jp/abpromise> or contact our technical team.

### **Terms and conditions**

---

- Guarantee only valid for products bought direct from Abcam or one of our authorized distributors