

Anti-CHREBP antibody ab92809

[1 Abreviews](#) [10 References](#) [画像数 4](#)

製品の概要

製品名	Anti-CHREBP antibody
製品の詳細	Rabbit polyclonal to CHREBP
由来種	Rabbit
アプリケーション	適用あり: IHC-P, WB, ICC/IF
種交差性	交差種: Mouse, Human
免疫原	Synthetic peptide corresponding to Human CHREBP aa 800-900 (C terminal).
特記事項	<p>The Life Science industry has been in the grips of a reproducibility crisis for a number of years. Abcam is leading the way in addressing this with our range of recombinant monoclonal antibodies and knockout edited cell lines for gold-standard validation. Please check that this product meets your needs before purchasing.</p> <p>If you have any questions, special requirements or concerns, please send us an inquiry and/or contact our Support team ahead of purchase. Recommended alternatives for this product can be found below, along with publications, customer reviews and Q&As</p>

製品の特性

製品の状態	Liquid
保存方法	Shipped at 4°C. Store at +4°C short term (1-2 weeks). Upon delivery aliquot. Store at -20°C or -80°C. Avoid freeze / thaw cycle.
バッファー	pH: 7.40 Preservative: 0.01% Sodium azide Constituent: Tris citrate/phosphate
精製度	Immunogen affinity purified
ポリ/モノ	ポリクローナル
アイソタイプ	IgG

アプリケーション

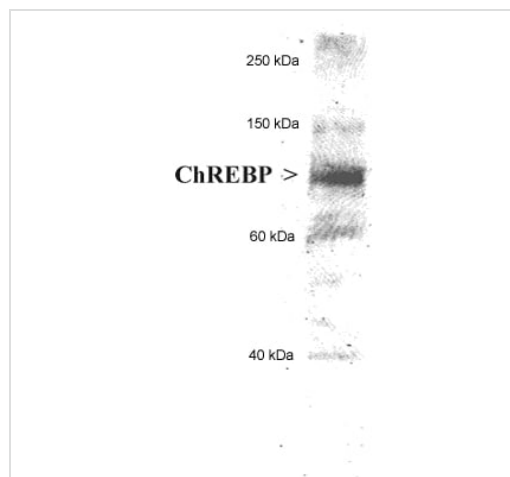
The Abpromise guarantee Abpromise保証は、次のテスト済みアプリケーションにおけるab92809の使用に適用されます
アプリケーションノートには、推奨の開始希釈率がありますが、適切な希釈率につきましてはご検討ください。

アプリケーション	Abreviews	特記事項
IHC-P		Use at an assay dependent concentration.
WB		Use at an assay dependent concentration. Predicted molecular weight: 95 kDa.
ICC/IF		1/100 - 1/500.

ターゲット情報

機能	Transcriptional repressor. Binds to the canonical and non-canonical E box sequences 5'-CACGTG-3'.
組織特異性	Expressed in liver, heart, kidney, cerebellum and intestinal tissues.
関連疾患	Note=WBSCR14 is located in the Williams-Beuren syndrome (WBS) critical region. WBS results from a hemizygous deletion of several genes on chromosome 7q11.23, thought to arise as a consequence of unequal crossing over between highly homologous low-copy repeat sequences flanking the deleted region. Haploinsufficiency of WBSCR14 may be the cause of certain cardiovascular and musculo-skeletal abnormalities observed in the disease.
配列類似性	Contains 1 basic helix-loop-helix (bHLH) domain.
細胞内局在	Nucleus.

画像

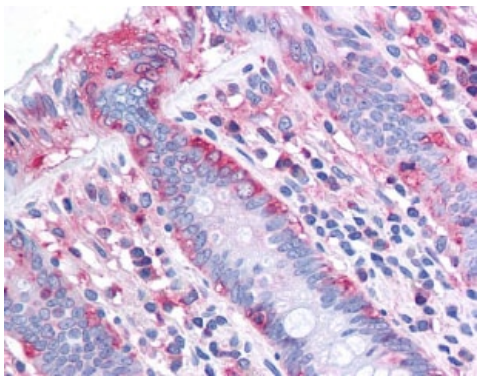


Western blot - Anti-CHREBP antibody (ab92809)

Anti-CHREBP antibody (ab92809) (anti CHREBP) + human hepatocyte lysate at 20 µg

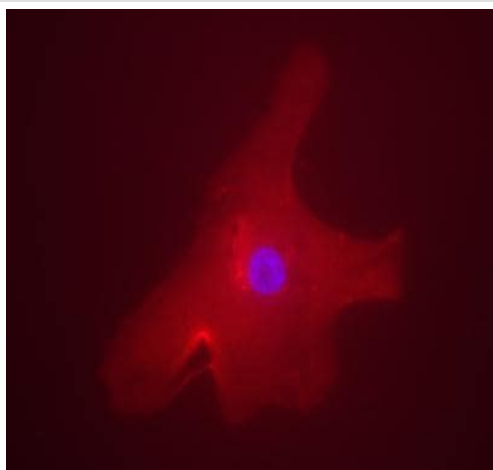
Predicted band size: 95 kDa

5-10 second film exposure



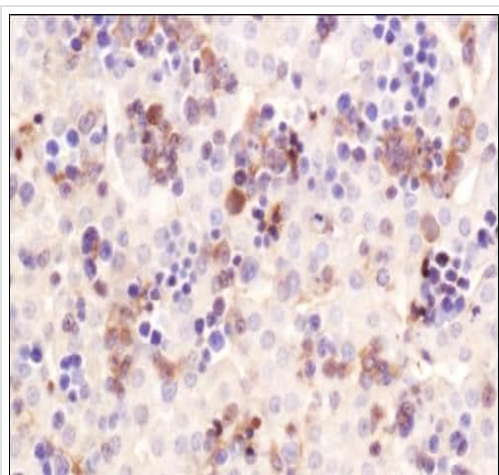
anti CHREBP staining CHREBP in human colon epithelium (40X)
by immunohistochemistry.

Immunohistochemistry (Formalin/PFA-fixed paraffin-
embedded sections) - Anti-CHREBP antibody
(ab92809)



anti CHREBP staining CHREBP in human hepatocyte by
Immunofluorescence. Overlay staining of ChREBP (rhodamine red)
and DAPI nuclear staining (blue).

Immunocytochemistry/ Immunofluorescence - Anti-
CHREBP antibody (ab92809)



Immunohistochemistry analysis of mouse liver labeling CHREBP with ab92809. DAB with hematoxylin counterstain.

Immunohistochemistry (Formalin/PFA-fixed paraffin-embedded sections) - Anti-CHREBP antibody (ab92809)

Please note: All products are "FOR RESEARCH USE ONLY. NOT FOR USE IN DIAGNOSTIC PROCEDURES"

Our Abpromise to you: Quality guaranteed and expert technical support

- Replacement or refund for products not performing as stated on the datasheet
- Valid for 12 months from date of delivery
- Response to your inquiry within 24 hours
- We provide support in Chinese, English, French, German, Japanese and Spanish
- Extensive multi-media technical resources to help you
- We investigate all quality concerns to ensure our products perform to the highest standards

If the product does not perform as described on this datasheet, we will offer a refund or replacement. For full details of the Abpromise, please visit <https://www.abcam.co.jp/abpromise> or contact our technical team.

Terms and conditions

- Guarantee only valid for products bought direct from Abcam or one of our authorized distributors