

Anti-CHRAC-17 antibody ab229060

画像表示 /

医薬用外劇物

製品の概要

製品名	Anti-CHRAC-17 antibody
製品の詳細	Rabbit polyclonal to CHRAC-17
由来種	Rabbit
アプリケーション	適用あり: IHC-P, WB, ICC/IF
種交差性	交差種: Mouse, Human 交差が予測される動物種: Rat, Chicken, Cow, Xenopus laevis, Chimpanzee, Rhesus monkey



免疫原	Recombinant fragment within Human CHRAC-17 (internal sequence). The exact sequence is proprietary. Database link: Q9NRF9
-----	---

ポジティブ・コントロール	WB: HEK-293T whole cell lysate. IHC-P: Mouse muscle tissue; Cal27 xenograft tissue. ICC/IF: HeLa cells.
--------------	---

特記事項	<p>The Life Science industry has been in the grips of a reproducibility crisis for a number of years. Abcam is leading the way in addressing this with our range of recombinant monoclonal antibodies and knockout edited cell lines for gold-standard validation. Please check that this product meets your needs before purchasing.</p> <p>If you have any questions, special requirements or concerns, please send us an inquiry and/or contact our Support team ahead of purchase. Recommended alternatives for this product can be found below, along with publications, customer reviews and Q&As</p>
------	---

製品の特性

製品の状態	Liquid
保存方法	Shipped at 4°C. Store at +4°C short term (1-2 weeks). Upon delivery aliquot. Store at -20°C long term. Avoid freeze / thaw cycle.
バッファー	pH: 7.00 Preservative: 0.01% Thimerosal (merthiolate) Constituents: 1.21% Tris, 0.75% Glycine, 20% Glycerol (glycerin, glycerine)
精製度	Immunogen affinity purified
ポリ/モノ	ポリクローナル

アイソタイプIgG

アプリケーション

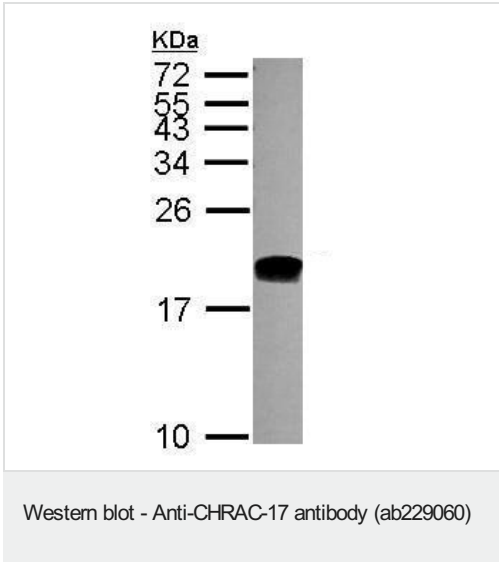
The Abpromise guarantee **Abpromise保証は、次のテスト済みアプリケーションにおけるab229060の使用に適用されます**
アプリケーションノートには、推奨の開始希釈率がありますが、適切な希釈率につきましてはご検討ください。

アプリケーション	Abreviews	特記事項
IHC-P		1/100 - 1/1000.
WB		1/500 - 1/3000. Predicted molecular weight: 16 kDa.
ICC/IF		1/100 - 1/1000.

ターゲット情報

機能	Forms a complex with DNA polymerase epsilon subunit CHRAC1 and binds naked DNA, which is then incorporated into chromatin, aided by the nucleosome-remodeling activity of ISWI/SNF2H and ACF1.
組織特異性	Expressed in all tissues tested, including, heart, brain, placenta, lung, liver, skeletal muscle, kidney and pancreas.
細胞内局在	Nucleus.

画像

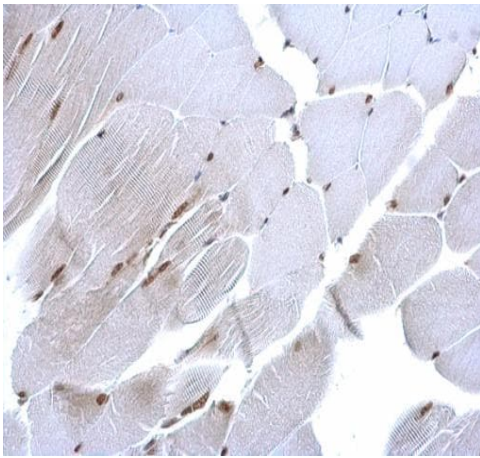


Anti-CHRAC-17 antibody (ab229060) at 1/1000 dilution + HEK-293T (human epithelial cell line from embryonic kidney transformed with large T antigen) whole cell lysate at 30 µg

Developed using the ECL technique.

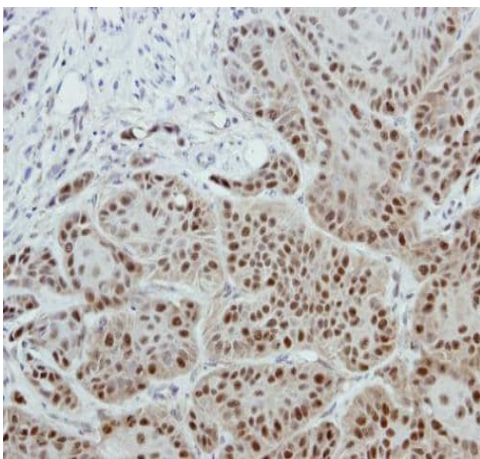
Predicted band size: 16 kDa

15% SDS-PAGE



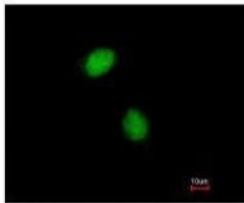
Paraffin-embedded mouse muscle tissue stained for CHRAC-17 with ab229060 at 1/1000 dilution in immunohistochemical analysis.

Immunohistochemistry (Formalin/PFA-fixed paraffin-embedded sections) - Anti-CHRAC-17 antibody (ab229060)



Paraffin-embedded Cal27 xenograft tissue stained for CHRAC-17 with ab229060 at 1/500 dilution in immunohistochemical analysis.

Immunohistochemistry (Formalin/PFA-fixed paraffin-embedded sections) - Anti-CHRAC-17 antibody (ab229060)



Immunocytochemistry/ Immunofluorescence - Anti-CHRAC-17 antibody (ab229060)

Paraformaldehyde-fixed HeLa (human epithelial cell line from cervix adenocarcinoma) cells stained for CHRAC-17 (green) using ab229060 at 1/200 dilution in ICC/IF.

Nuclear counterstain: Hoechst 33342 (blue).

Please note: All products are "FOR RESEARCH USE ONLY. NOT FOR USE IN DIAGNOSTIC PROCEDURES"

Our Abpromise to you: Quality guaranteed and expert technical support

- Replacement or refund for products not performing as stated on the datasheet
- Valid for 12 months from date of delivery
- Response to your inquiry within 24 hours
- We provide support in Chinese, English, French, German, Japanese and Spanish
- Extensive multi-media technical resources to help you
- We investigate all quality concerns to ensure our products perform to the highest standards

If the product does not perform as described on this datasheet, we will offer a refund or replacement. For full details of the Abpromise, please visit <https://www.abcam.co.jp/abpromise> or contact our technical team.

Terms and conditions

- Guarantee only valid for products bought direct from Abcam or one of our authorized distributors