

### Anti-Chp1 antibody ab18191

★★★★★ [1 Abreviews](#) [14 References](#) [画像数 3](#)

#### 製品の概要

製品名	Anti-Chp1 antibody
製品の詳細	Rabbit polyclonal to Chp1
由来種	Rabbit
アプリケーション	<b>適用あり:</b> ChIP, WB
種交差性	<b>交差種:</b> Schizosaccharomyces pombe
免疫原	Synthetic peptide. This information is proprietary to Abcam and/or its suppliers.
ポジティブ・コントロール	This antibody gave a positive signal in S. pombe whole cell lysate.
特記事項	<p>The Life Science industry has been in the grips of a reproducibility crisis for a number of years. Abcam is leading the way in addressing this with our range of recombinant monoclonal antibodies and knockout edited cell lines for gold-standard validation. Please check that this product meets your needs before purchasing.</p> <p>If you have any questions, special requirements or concerns, please send us an inquiry and/or contact our Support team ahead of purchase. Recommended alternatives for this product can be found below, along with publications, customer reviews and Q&amp;As</p>

#### 製品の特性

製品の状態	Liquid
保存方法	Shipped at 4°C. Store at +4°C short term (1-2 weeks). Upon delivery aliquot. Store at -20°C or -80°C. Avoid freeze / thaw cycle.
バッファー	<p>pH: 7.40</p> <p>Preservative: 0.02% Sodium azide</p> <p>Constituent: PBS</p> <p>Batches of this product that have a concentration &lt; 1mg/ml may have BSA added as a stabilising agent. If you would like information about the formulation of a specific lot, please contact our scientific support team who will be happy to help.</p>
精製度	Immunogen affinity purified
ポリ/モノ	ポリクローナル
アイソタイプ	IgG

## アプリケーション

**The Abpromise guarantee** **Abpromise保証は、次のテスト済みアプリケーションにおけるab18191の使用に適用されます**  
アプリケーションノートには、推奨の開始希釈率がありますが、適切な希釈率につきましてはご確認ください。

アプリケーション	Abreviews	特記事項
ChIP	★★★★★ (1)	Use 2.5µg for 10 <sup>7</sup> cells.
WB		Use a concentration of 1 µg/ml. Detects a band of approximately 109 kDa (predicted molecular weight: 109 kDa).

## ターゲット情報

関連性	Chp1 a chromodomain protein associates with the <i>S. pombe</i> mating type locus and telomeres. Chp1 localization to heterochromatin depends on its chromodomain and the C-terminal domain of the protein. Chp1 and centromeric siRNAs are components of the RITS (RNA-induced initiation of transcriptional gene silencing) complex. The association of RITS with centromeres is linked to Dicer activity, which is required to cleave centromeric transcripts to produce short interfering RNAs that actively recruit components of heterochromatin to centromeres.
細胞内局在	Nuclear

## 画像



**All lanes :** Anti-Chp1 antibody (ab18191) at 1 µg/ml

**Lane 1 :** *S. pombe chp1Δ* lysate

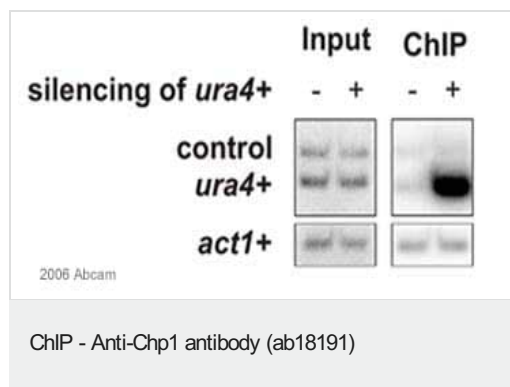
**Lane 2 :** *S. pombe* wildtype lysate

**Predicted band size:** 109 kDa

**Observed band size:** 109 kDa

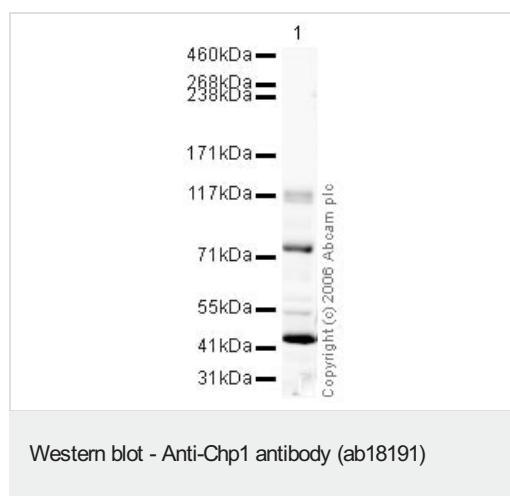
**Additional bands at:** 102 kDa (possible degradation product)

ab18191 specifically recognises Chp1 at 109 kDa in wildtype *S. pombe* lysate but not in *chp1Δ* lysate.



X-ChIP performed with ab18191 on *Schizosaccharomyces pombe* Cell lysate (whole cell). 5µl antibody were used per 500µl of chromatin/cell lysate according to standard *S. pombe* ChIP protocols. Protein-A Sepharose was used to recover the ChIPs. In the positive control the researcher specifically induced silencing of the *ura4+* gene. For the negative control the researcher performed multiplex PCR with primers amplifying *ura4+* and an un-silenced gene. In addition, *act1+* was amplified in a separate PCR reaction. Chp1 only binds to *ura4+* (and only if silencing is induced).

This image is courtesy of an Abreview submitted by **Marc B?** on **9 February 2006**



Anti-Chp1 antibody (ab18191) at 1 µg/ml + *S. pombe* Whole Cell Lysate at 20 µg

### Secondary

Goat polyclonal to Rabbit IgG - H&L - Pre-Adsorbed (HRP) at 1/10000 dilution

Performed under reducing conditions.

**Predicted band size:** 109 kDa

**Observed band size:** 115,75 kDa

**Additional bands at:** 42 kDa. We are unsure as to the identity of these extra bands.

**Please note:** All products are "FOR RESEARCH USE ONLY. NOT FOR USE IN DIAGNOSTIC PROCEDURES"

### Our Abpromise to you: Quality guaranteed and expert technical support

- Replacement or refund for products not performing as stated on the datasheet
- Valid for 12 months from date of delivery
- Response to your inquiry within 24 hours
- We provide support in Chinese, English, French, German, Japanese and Spanish
- Extensive multi-media technical resources to help you
- We investigate all quality concerns to ensure our products perform to the highest standards

If the product does not perform as described on this datasheet, we will offer a refund or replacement. For full details of the Abpromise, please visit <https://www.abcam.co.jp/abpromise> or contact our technical team.

### Terms and conditions

- Guarantee only valid for products bought direct from Abcam or one of our authorized distributors