

### Anti-CHORDC1 antibody ab106594

画像数 3

#### 製品の概要

製品名	Anti-CHORDC1 antibody
製品の詳細	Rabbit polyclonal to CHORDC1
由来種	Rabbit
特異性	At least two isoforms of CHORDC1 are known to exist; ab106594 will recognize both isoforms.
アプリケーション	<b>適用あり:</b> ICC/IF, WB, ICC
種交差性	<b>交差種:</b> Human
免疫原	21 amino acid peptide from near the N terminus of Human CHORDC1 (NP_036256).
ポジティブ・コントロール	293 cells and cell lysate
特記事項	<p>The Life Science industry has been in the grips of a reproducibility crisis for a number of years. Abcam is leading the way in addressing this with our range of recombinant monoclonal antibodies and knockout edited cell lines for gold-standard validation. Please check that this product meets your needs before purchasing.</p> <p>If you have any questions, special requirements or concerns, please send us an inquiry and/or contact our Support team ahead of purchase. Recommended alternatives for this product can be found below, along with publications, customer reviews and Q&amp;As</p>

#### 製品の特性

製品の状態	Liquid
保存方法	Shipped at 4°C. Store at 4°C (stable for up to 12 months).
バッファー	<p>pH: 7.2</p> <p>Preservative: 0.02% Sodium azide</p> <p>Constituent: PBS</p>
精製度	Immunogen affinity purified
特記事項(精製)	Affinity chromatography purified via peptide column
ポリ/モノ	ポリクローナル
アイソタイプ	IgG

#### アプリケーション

## The Abpromise guarantee

**Abpromise保証は、次のテスト済みアプリケーションにおけるab106594の使用に適用されます**

アプリケーションノートには、推奨の開始希釈率がありますが、適切な希釈率につきましてはご検討ください。

アプリケーション	Abreviews	特記事項
ICC/IF		Use a concentration of 20 µg/ml.
WB		Use a concentration of 1 - 2 µg/ml. Predicted molecular weight: 37 kDa.
ICC		Use a concentration of 2.5 µg/ml.

## ターゲット情報

### 機能

Regulates centrosome duplication, probably by inhibiting the kinase activity of ROCK2. Proposed to act as co-chaperone for HSP90. May play a role in the regulation of NOD1 via a HSP90 chaperone complex. In vitro, has intrinsic chaperone activity. This function may be achieved by inhibiting association of ROCK2 with NPM1. Involved in stress response. Prevents tumorigenesis.

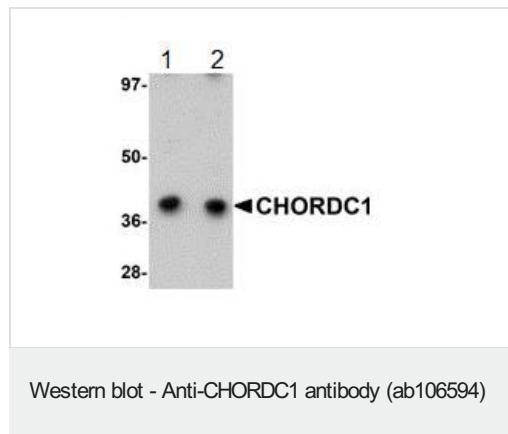
### 組織特異性

Underexpressed in many breast and lung cancers.

### 配列類似性

Contains 2 CHORD domains.  
Contains 1 CS domain.

## 画像



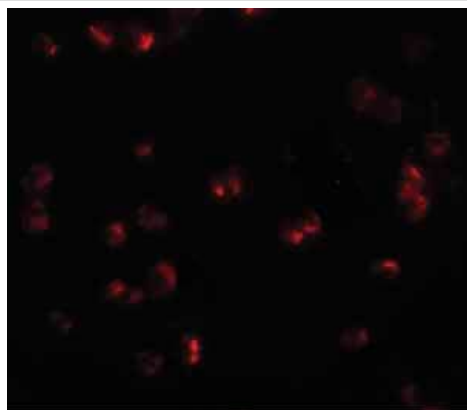
**Lane 1 :** Anti-CHORDC1 antibody (ab106594) at 1 µg/ml

**Lane 2 :** Anti-CHORDC1 antibody (ab106594) at 2 µg/ml

**All lanes :** 293 cell lysate

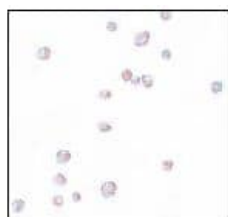
Lysates/proteins at 15 µg per lane.

**Predicted band size:** 37 kDa



Immunofluorescence of CHORDC1 in 293 cells with ab106594 at 20 µg/mL.

Immunocytochemistry/ Immunofluorescence - Anti-CHORDC1 antibody (ab106594)



ab106594 at 2.5 µg/ml detecting CHORDC1 in 293 cells by Immunocytochemistry.

Immunocytochemistry - Anti-CHORDC1 antibody (ab106594)

**Please note:** All products are "FOR RESEARCH USE ONLY. NOT FOR USE IN DIAGNOSTIC PROCEDURES"

### Our Abpromise to you: Quality guaranteed and expert technical support

- Replacement or refund for products not performing as stated on the datasheet
- Valid for 12 months from date of delivery
- Response to your inquiry within 24 hours
- We provide support in Chinese, English, French, German, Japanese and Spanish
- Extensive multi-media technical resources to help you
- We investigate all quality concerns to ensure our products perform to the highest standards

If the product does not perform as described on this datasheet, we will offer a refund or replacement. For full details of the Abpromise, please visit <https://www.abcam.co.jp/abpromise> or contact our technical team.

### Terms and conditions

- Guarantee only valid for products bought direct from Abcam or one of our authorized distributors