


Anti-Choline kinase alpha antibody ab88053

★★★★★ [3 Abreviews](#) [13 References](#) [画像数 5](#)

製品の概要

製品名	Anti-Choline kinase alpha antibody
製品の詳細	Rabbit polyclonal to Choline kinase alpha
由来種	Rabbit
アプリケーション	適用あり: WB, ICC/IF
種交差性	交差種: Mouse, Rat, Human 交差が予測される動物種: Zebrafish 
免疫原	Synthetic peptide. This information is proprietary to Abcam and/or its suppliers.
ポジティブ・コントロール	Recombinant Human Choline kinase alpha protein (ab114521) can be used as a positive control in WB. This antibody gave a positive signal in the following lysates: Human Breast Tissue; Mouse Lung Tissue; Mouse Brain Tissue; Rat Brain Tissue; MCF7 Whole Cell; HepG2 Whole Cell; HeLa Whole Cell; Jurkat Whole Cell; A549, Human Glioblastoma Whole Cell.
特記事項	<p>The Life Science industry has been in the grips of a reproducibility crisis for a number of years. Abcam is leading the way in addressing this with our range of recombinant monoclonal antibodies and knockout edited cell lines for gold-standard validation. Please check that this product meets your needs before purchasing.</p> <p>If you have any questions, special requirements or concerns, please send us an inquiry and/or contact our Support team ahead of purchase. Recommended alternatives for this product can be found below, along with publications, customer reviews and Q&As</p>

製品の特性

製品の状態	Liquid
保存方法	Shipped at 4°C. Store at +4°C short term (1-2 weeks). Upon delivery aliquot. Store at -20°C or -80°C. Avoid freeze / thaw cycle.
バッファー	pH: 7.40 Preservative: 0.02% Sodium azide Constituent: PBS

Batches of this product that have a concentration < 1mg/ml may have BSA added as a stabilising agent. If you would like information about the formulation of a specific lot, please contact our scientific support team who will be happy to help.

精製度	Immunogen affinity purified
ポリモノ	ポリクローナル
アイソタイプ	IgG

アプリケーション

The Abpromise guarantee **Abpromise保証は、次のテスト済みアプリケーションにおけるab88053の使用に適用されます**
 アプリケーションノートには、推奨の開始希釈率がありますが、適切な希釈率につきましてはご検討ください。

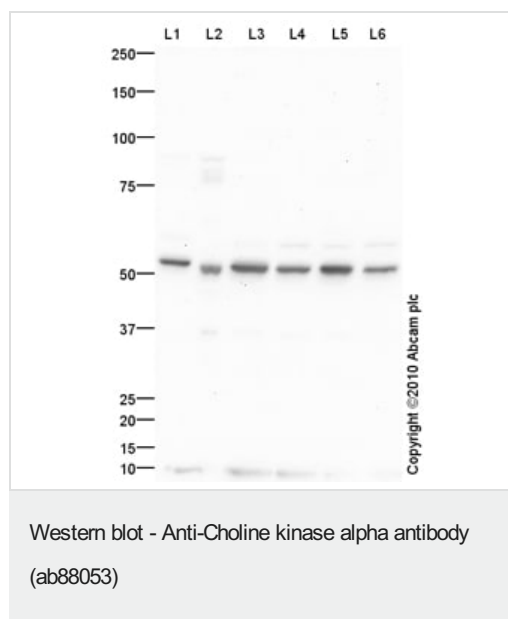
アプリケーション	Abreviews	特記事項
WB	★★★★★ (1)	Use a concentration of 1 µg/ml. Detects a band of approximately 52 kDa (predicted molecular weight: 52 kDa).
ICC/IF	★★★★★ (1)	Use a concentration of 5 µg/ml.

ターゲット情報

関連性 The dominant pathway for biosynthesis of phosphatidylcholine occurs through the CDP-choline pathway. Choline kinase alpha (CHK) is the first enzyme in the pathway and may thereby play an upstream regulatory role in lipid transport and metabolism. CHK additionally catalyzes phosphorylation of ethanolamine.

細胞内局在 Cytoplasmic

画像



All lanes : Anti-Choline kinase alpha antibody (ab88053) at 1 µg/ml

Lane 1 : MCF7 (Human breast adenocarcinoma cell line) Whole Cell Lysate

Lane 2 : Human breast tissue lysate - total protein (**ab30090**)

Lane 3 : HepG2 (Human hepatocellular liver carcinoma cell line) Whole Cell Lysate

Lane 4 : HeLa (Human epithelial carcinoma cell line) Whole Cell Lysate

Lane 5 : Jurkat (Human T cell lymphoblast-like cell line) Whole Cell Lysate

Lane 6 : A549 (Human lung adenocarcinoma epithelial cell line) Whole Cell Lysate

Lysates/proteins at 10 µg per lane.

Secondary

All lanes : Goat polyclonal to Rabbit IgG - H&L - Pre-Adsorbed (HRP) at 1/3000 dilution

Developed using the ECL technique.

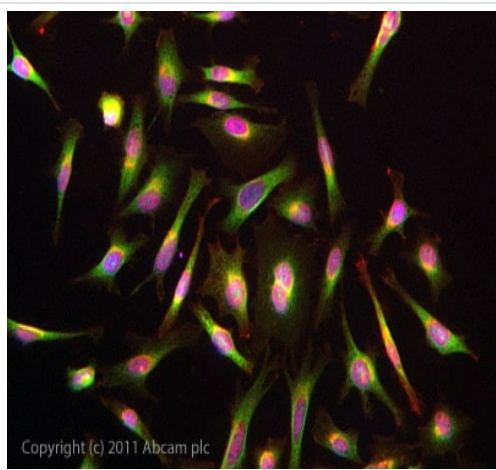
Performed under reducing conditions.

Predicted band size: 52 kDa

Observed band size: 52 kDa

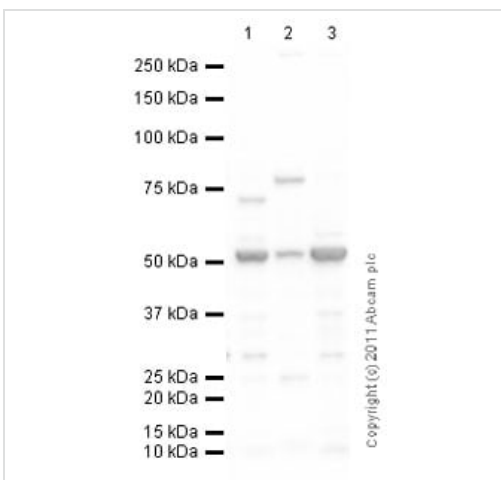
Additional bands at: 58 kDa. We are unsure as to the identity of these extra bands.

Exposure time: 2 minutes



Immunocytochemistry/ Immunofluorescence - Anti-Choline kinase alpha antibody (ab88053)

ICC/IF image of ab88053 stained HeLa cells. The cells were 4% PFA fixed (10 min) and then incubated in 1%BSA / 10% normal goat serum / 0.3M glycine in 0.1% PBS-Tween for 1h to permeabilise the cells and block non-specific protein-protein interactions. The cells were then incubated with the antibody (ab88053, 5µg/ml) overnight at +4°C. The secondary antibody (green) was [ab96899](#) Dylight 488 goat anti-rabbit IgG (H+L) used at a 1/250 dilution for 1h. Alexa Fluor® 594 WGA was used to label plasma membranes (red) at a 1/200 dilution for 1h. DAPI was used to stain the cell nuclei (blue) at a concentration of 1.43µM.



Western blot - Anti-Choline kinase alpha antibody (ab88053)

All lanes : Anti-Choline kinase alpha antibody (ab88053) at 1 µg/ml

Lane 1 : Brain (Mouse) Tissue Lysate

Lane 2 : Mouse lung normal tissue lysate - total protein ([ab29297](#))

Lane 3 : Brain (Rat) Tissue Lysate

Lysates/proteins at 10 µg per lane.

Secondary

All lanes : Goat Anti-Rabbit IgG H&L (HRP) preadsorbed ([ab97080](#)) at 1/5000 dilution

Developed using the ECL technique.

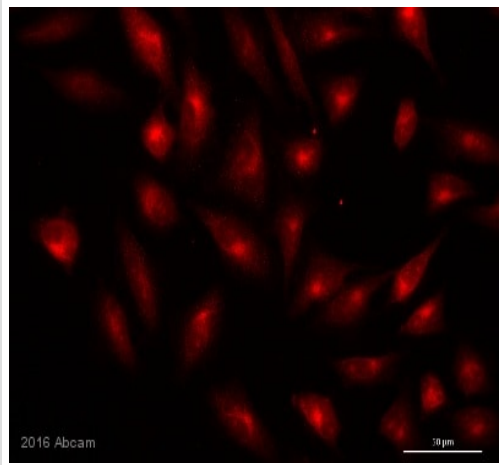
Performed under reducing conditions.

Predicted band size: 52 kDa

Observed band size: 52 kDa

Additional bands at: 72 kDa, 78 kDa. We are unsure as to the identity of these extra bands.

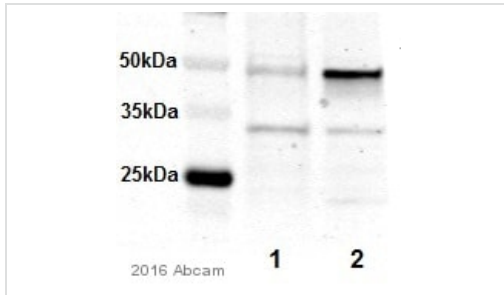
Exposure time: 1 minute



Immunocytochemistry/ Immunofluorescence - Anti-Choline kinase alpha antibody (ab88053)

This image is courtesy of an anonymous abreview.

Immunocytochemistry/ Immunofluorescence analysis of human glioblastoma cells labeling Choline kinase alpha with ab88053 at 1/250 dilution. Cells were fixed in paraformaldehyde and permeabilized with TritonX-100. A goat anti-rabbit Alexa Fluor594 was used as the secondary antibody at 1/1000 dilution.



Western blot - Anti-Choline kinase alpha antibody (ab88053)

This image is courtesy of an anonymous Abreview

All lanes : Anti-Choline kinase alpha antibody (ab88053) at 1/1000 dilution

Lane 1 : Choline kinase alpha knockdown Human Glioblastoma whole cell lysate

Lane 2 : Human Glioblastoma (Control) whole cell lysate

Lysates/proteins at 50 µg per lane.

Secondary

All lanes : goat-anti-rabbit IRDye800CW at 1/10000 dilution

Performed under reducing conditions.

Predicted band size: 52 kDa

Exposure time: 1 minute

Please note: All products are "FOR RESEARCH USE ONLY. NOT FOR USE IN DIAGNOSTIC PROCEDURES"

Our Abpromise to you: Quality guaranteed and expert technical support

- Replacement or refund for products not performing as stated on the datasheet
- Valid for 12 months from date of delivery
- Response to your inquiry within 24 hours

- We provide support in Chinese, English, French, German, Japanese and Spanish
- Extensive multi-media technical resources to help you
- We investigate all quality concerns to ensure our products perform to the highest standards

If the product does not perform as described on this datasheet, we will offer a refund or replacement. For full details of the Abpromise, please visit <https://www.abcam.co.jp/abpromise> or contact our technical team.

Terms and conditions

- Guarantee only valid for products bought direct from Abcam or one of our authorized distributors