




Anti-Choline Acetyltransferase antibody ab6168

★★★★★ [7 Abreviews](#) [13 References](#) [画像数 1](#)

製品の概要

製品名	Anti-Choline Acetyltransferase antibody
製品の詳細	Rabbit polyclonal to Choline Acetyltransferase
由来種	Rabbit
特異性	Extensive immunohistochemistry indicates localisation to cholinergic nervous system only. Will stain cholinergic neurons in rat central and peripheral nervous systems.
アプリケーション	適用あり: IHC-FrFI
種交差性	交差種: Rat 交差が予測される動物種: Chicken, Human, Pig, Non human primates  非交差種: Sheep
免疫原	Synthetic peptide: H-GLFSSYRLPGHTQDTLVAQKSS conjugated to KLH by a Glutaraldehyde linker, corresponding to amino acids 168-189 of Choline Acetyltransferase.
特記事項	<div>  Run BLAST with  Run BLAST with </div> <p>This antibody appears to have identical characteristics to those described by Benecke et al (1993). The antigen is the same. It is an excellent reagent for immunohistochemistry for both peripheral and central nervous system, staining both cell bodies and nerve terminals.</p> <p>The Life Science industry has been in the grips of a reproducibility crisis for a number of years. Abcam is leading the way in addressing this with our range of recombinant monoclonal antibodies and knockout edited cell lines for gold-standard validation. Please check that this product meets your needs before purchasing.</p> <p>If you have any questions, special requirements or concerns, please send us an inquiry and/or contact our Support team ahead of purchase. Recommended alternatives for this product can be found below, along with publications, customer reviews and Q&As</p>

製品の特性

製品の状態	Liquid
保存方法	Shipped at 4°C. Store at +4°C short term (1-2 weeks). Add glycerol to a final volume of 50% for extra stability and aliquot. Store at -20°C or -80°C. Avoid freeze / thaw cycle.
精製度	Whole antiserum
ポリ/モノ	ポリクローナル

アプリケーション

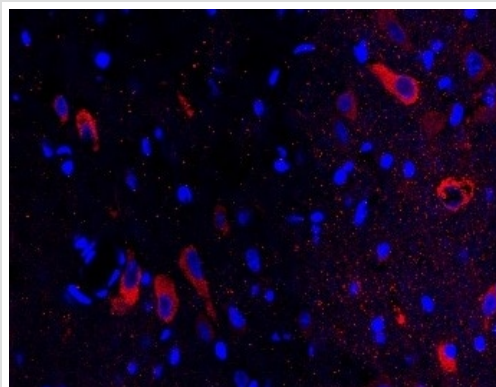
The Abpromise guarantee Abpromise保証は、次のテスト済みアプリケーションにおけるab6168の使用に適用されます
アプリケーションノートには、推奨の開始希釈率がありますが、適切な希釈率につきましてはご確認ください。

アプリケーション	Abreviews	特記事項
IHC-FrFI		Use at an assay dependent concentration.

ターゲット情報

機能	Catalyzes the reversible synthesis of acetylcholine (ACh) from acetyl CoA and choline at cholinergic synapses.
関連疾患	Myasthenic syndrome, congenital, 6, presynaptic
配列類似性	Belongs to the carnitine/choline acetyltransferase family.

画像



Immunohistochemistry analysis of free-floating rat forebrain tissue labelling Choline Acetyltransferase with ab6168 at a dilution of 1/100.

Immunohistochemistry - Free Floating - Anti-Choline Acetyltransferase antibody (ab6168)

Please note: All products are "FOR RESEARCH USE ONLY. NOT FOR USE IN DIAGNOSTIC PROCEDURES"

Our Abpromise to you: Quality guaranteed and expert technical support

- Replacement or refund for products not performing as stated on the datasheet
- Valid for 12 months from date of delivery
- Response to your inquiry within 24 hours
- We provide support in Chinese, English, French, German, Japanese and Spanish
- Extensive multi-media technical resources to help you

- We investigate all quality concerns to ensure our products perform to the highest standards

If the product does not perform as described on this datasheet, we will offer a refund or replacement. For full details of the Abpromise, please visit <https://www.abcam.co.jp/abpromise> or contact our technical team.

Terms and conditions

- Guarantee only valid for products bought direct from Abcam or one of our authorized distributors