

# Anti-Cholecystokinin antibody ab27441

6 References [画像数 3](#)

### 製品の概要

製品名	Anti-Cholecystokinin antibody
製品の詳細	Rabbit polyclonal to Cholecystokinin
由来種	Rabbit
アプリケーション	<b>適用あり:</b> IHC-P, ICC/IF, WB
種交差性	<b>交差種:</b> Human
免疫原	Synthetic peptide within Human Cholecystokinin aa 50 to the C-terminus (N terminal). The exact sequence is proprietary. Database link: <a href="#">P06307</a>
ポジティブ・コントロール	Stomach. This antibody gave a positive result when used in the following formaldehyde fixed cell lines: CaCO2
特記事項	<p><b>This product is FOR RESEARCH USE ONLY. For commercial use, please contact <a href="mailto:partnerships@abcam.com">partnerships@abcam.com</a>.</b></p> <p>The Life Science industry has been in the grips of a reproducibility crisis for a number of years. Abcam is leading the way in addressing this with our range of recombinant monoclonal antibodies and knockout edited cell lines for gold-standard validation. Please check that this product meets your needs before purchasing.</p> <p>If you have any questions, special requirements or concerns, please send us an inquiry and/or contact our Support team ahead of purchase. Recommended alternatives for this product can be found below, along with publications, customer reviews and Q&amp;As</p>

### 製品の特性

製品の状態	Liquid
保存方法	Shipped at 4°C. Upon delivery aliquot and store at -20°C. Avoid freeze / thaw cycles.
バッファー	pH: 7.60 Preservative: 0.1% Sodium azide Constituents: PBS, 1% BSA
精製度	Immunogen affinity purified
ポリ/モノ	ポリクローナル
アイソタイプ	IgG

## アプリケーション

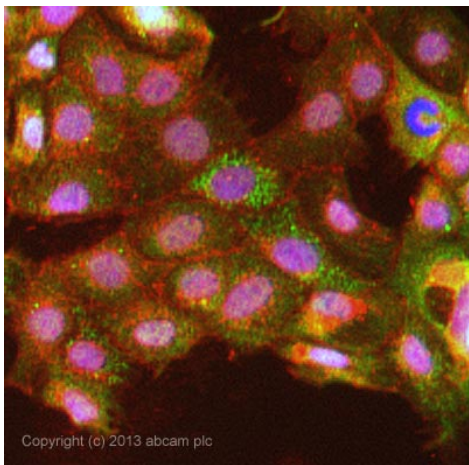
**The Abpromise guarantee**      Abpromise保証は、 次のテスト済みアプリケーションにおけるab27441の使用に適用されます  
アプリケーションノートには、推奨の開始希釈率がありますが、適切な希釈率につきましてはご検討ください。

アプリケーション	Abreviews	特記事項
IHC-P		1/200. Do not perform antigen retrieval. Incubate for 10 minutes at room temperature.
ICC/IF		Use a concentration of 10 µg/ml.
WB		Use at an assay dependent concentration. Predicted molecular weight: 12 kDa.

## ターゲット情報

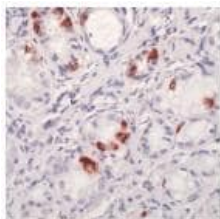
機能	This peptide hormone induces gall bladder contraction and the release of pancreatic enzymes in the gut. Its function in the brain is not clear. Binding to CCK-A receptors stimulates amylase release from the pancreas, binding to CCK-B receptors stimulates gastric acid secretion.
配列類似性	Belongs to the gastrin/cholecystokinin family.
翻訳後修飾	The precursor is cleaved by proteases to produce a number of active cholecystokinins.
細胞内局在	Secreted.

## 画像



ICC/IF image of ab27441 stained CaCO<sub>2</sub> cells. The cells were 4% formaldehyde fixed (10 min) and then incubated in 1%BSA / 10% normal goat serum / 0.3M glycine in 0.1% PBS-Tween for 1h to permeabilise the cells and block non-specific protein-protein interactions. The cells were then incubated with the antibody ab27441 at 10µg/ml overnight at +4°C. The secondary antibody (green) was DyLight® 488 goat anti- rabbit (**ab96899**) IgG (H+L) used at a 1/250 dilution for 1h. Alexa Fluor® 594 WGA was used to label plasma membranes (red) at a 1/200 dilution for 1h. DAPI was used to stain the cell nuclei (blue) at a concentration of 1.43µM.

Immunocytochemistry/ Immunofluorescence - Anti-Cholecystokinin antibody (ab27441)



Ab27441, at a dilution of 1/200, staining Cholecystokinin in formalin fixed, paraffin embedded stomach tissue by Immunohistochemistry.

Immunohistochemistry (Formalin/PFA-fixed paraffin-embedded sections) - Anti-Cholecystokinin antibody (ab27441)



Anti-Cholecystokinin antibody (ab27441) at 1/25 dilution + Brain cell lysate

**Predicted band size:** 12 kDa

**Observed band size:** 12 kDa

Western blot - Anti-Cholecystokinin antibody (ab27441)

**Please note:** All products are "FOR RESEARCH USE ONLY. NOT FOR USE IN DIAGNOSTIC PROCEDURES"

### Our Abpromise to you: Quality guaranteed and expert technical support

- Replacement or refund for products not performing as stated on the datasheet
- Valid for 12 months from date of delivery
- Response to your inquiry within 24 hours
- We provide support in Chinese, English, French, German, Japanese and Spanish
- Extensive multi-media technical resources to help you
- We investigate all quality concerns to ensure our products perform to the highest standards

If the product does not perform as described on this datasheet, we will offer a refund or replacement. For full details of the Abpromise, please visit <https://www.abcam.co.jp/abpromise> or contact our technical team.

## Terms and conditions

---

- Guarantee only valid for products bought direct from Abcam or one of our authorized distributors