


Anti-Chk1 (phospho S345) antibody ab58567

★★★★☆ [4 Abreviews](#) [17 References](#) [画像数 3](#)

製品の概要

製品名	Anti-Chk1 (phospho S345) antibody
製品の詳細	Rabbit polyclonal to Chk1 (phospho S345)
由来種	Rabbit
特異性	Specific for Chk1 (phospho S345) in ELISA, with <1% reactivity with the non-modified form of the immunogen.
アプリケーション	適用あり: WB, IHC-P, ELISA
種交差性	交差種: Human 交差が予測される動物種: Mouse, Rat, Chicken, Cow 
免疫原	Synthetic peptide. This information is proprietary to Abcam and/or its suppliers.
ポジティブ・コントロール	This antibody gave a positive signal in Hydroxyurea Treated (48hr, 2uM) Hela whole cell lysate. IHC-P: FFPE Human cervix normal.
特記事項	<p>Please note we cannot guarantee ICC/IF, however should you use this application for this product then please use a specific protocol which can be found in the protocols section of our datasheet here.</p> <p>The Life Science industry has been in the grips of a reproducibility crisis for a number of years. Abcam is leading the way in addressing this with our range of recombinant monoclonal antibodies and knockout edited cell lines for gold-standard validation. Please check that this product meets your needs before purchasing.</p> <p>If you have any questions, special requirements or concerns, please send us an inquiry and/or contact our Support team ahead of purchase. Recommended alternatives for this product can be found below, along with publications, customer reviews and Q&As</p>

製品の特性

製品の状態	Liquid
保存方法	Shipped at 4°C. Store at +4°C short term (1-2 weeks). Upon delivery aliquot. Store at -20°C or -80°C. Avoid freeze / thaw cycle.
バッファー	pH: 7.40 Preservative: 0.02% Sodium azide Constituent: PBS

Batches of this product that have a concentration < 1mg/ml may have BSA added as a stabilising agent. If you would like information about the formulation of a specific lot, please contact our scientific support team who will be happy to help.

精製度	Immunogen affinity purified
ポリ/モノ	ポリクローナル
アイソタイプ	IgG

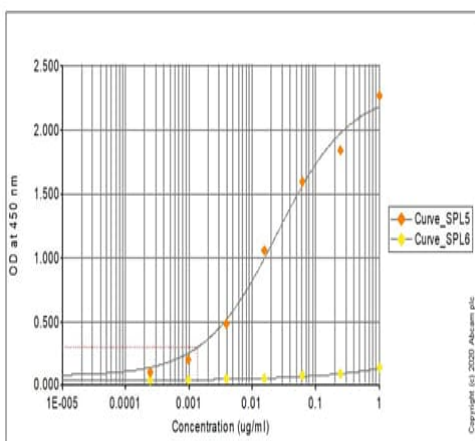
アプリケーション

The Abpromise guarantee **Abpromise保証は、** 次のテスト済みアプリケーションにおけるab58567の使用に適用されます
アプリケーションノートには、推奨の開始希釈率がありますが、適切な希釈率につきましてはご検討ください。

アプリケーション	Abreviews	特記事項
WB	★★★★★ (4)	Use a concentration of 1 µg/ml. Detects a band of approximately 54 kDa (predicted molecular weight: 54 kDa).
IHC-P		Use a concentration of 1 - 5 µg/ml. Perform heat mediated antigen retrieval with citrate buffer pH 6 before commencing with IHC staining protocol.
ELISA		Use at an assay dependent concentration.

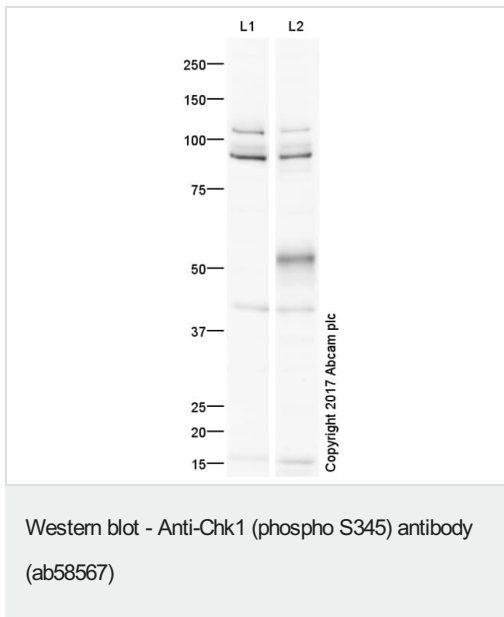
ターゲット情報

画像



ELISA - Anti-Chk1 (phospho S345) antibody
(ab58567)

ELISA using ab58567 at varying antibody concentrations.
Curve_SPL5 indicates binding to the Chk1 (phospho S345) peptide. Binding to the following peptides was not seen: Chk1 control peptide (Curve_SPL6).



All lanes : Anti-Chk1 (phospho S345) antibody (ab58567) at 1 $\mu\text{g/ml}$

Lane 1 : HeLa Whole Cell Lysate - Untreated

Lane 2 : HeLa Whole Cell Lysate - Hydroxyurea Treated (48hr, 2uM)

Lysates/proteins at 10 μg per lane.

Secondary

All lanes : Goat Anti-Rabbit IgG H&L (HRP) at 1/50000 dilution

Developed using the ECL technique.

Performed under reducing conditions.

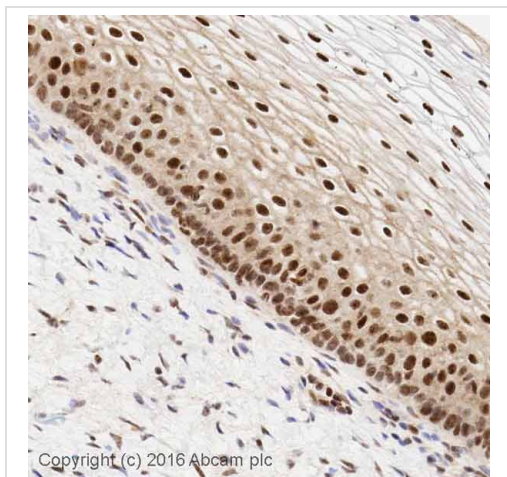
Predicted band size: 54 kDa

Observed band size: 54 kDa

Additional bands at: 105 kDa, 42 kDa, 90 kDa. We are unsure as to the identity of these extra bands.

Exposure time: 8 minutes

This blot was produced using a 4-12% Bis-tris gel under the MOPS buffer system. The gel was run at 200V for 50 minutes before being transferred onto a Nitrocellulose membrane at 30V for 70 minutes. The membrane was then blocked for an hour using 2% Bovine Serum Albumin before being incubated with ab58567 overnight at 4°C. Antibody binding was detected using an anti-rabbit antibody conjugated to HRP, and visualised using ECL development solution **ab133406**.



Immunohistochemistry (Formalin/PFA-fixed paraffin-embedded sections) - Anti-Chk1 (phospho S345) antibody (ab58567)

IHC image of ab58567 staining Human Cervical Carcinoma formalin fixed paraffin embedded tissue section*, performed on a Leica Bond™ system using the standard protocol F. The section was pre-treated using heat mediated antigen retrieval with sodium citrate buffer (pH6, epitope retrieval solution 1) for 20 mins. The section was then incubated with ab58567, 1µg/ml, for 15 mins at room temperature and detected using an HRP conjugated compact polymer system. DAB was used as the chromogen. The section was then counterstained with haematoxylin and mounted with DPX.

For other IHC staining systems (automated and non-automated) customers should optimize variable parameters such as antigen retrieval conditions, primary antibody concentration and antibody incubation times.

*Tissue obtained from the Human Research Tissue Bank, supported by the NIHR Cambridge Biomedical Research Centre

Please note: All products are "FOR RESEARCH USE ONLY. NOT FOR USE IN DIAGNOSTIC PROCEDURES"

Our Abpromise to you: Quality guaranteed and expert technical support

- Replacement or refund for products not performing as stated on the datasheet
- Valid for 12 months from date of delivery
- Response to your inquiry within 24 hours
- We provide support in Chinese, English, French, German, Japanese and Spanish
- Extensive multi-media technical resources to help you
- We investigate all quality concerns to ensure our products perform to the highest standards

If the product does not perform as described on this datasheet, we will offer a refund or replacement. For full details of the Abpromise, please visit <https://www.abcam.co.jp/abpromise> or contact our technical team.

Terms and conditions

- Guarantee only valid for products bought direct from Abcam or one of our authorized distributors