


Anti-Chk1 antibody ab17191

画像数 3

製品の概要

製品名	Anti-Chk1 antibody
製品の詳細	Rabbit polyclonal to Chk1
由来種	Rabbit
アプリケーション	適用あり: IHC-P, IP, WB
種交差性	交差種: Human 交差が予測される動物種: Dog, Pig, Chimpanzee, Rhesus monkey, Gorilla, Orangutan 
免疫原	Synthetic peptide within Human Chk1 aa 250-350. The exact immunogen sequence used to generate this antibody is proprietary information. If additional detail on the immunogen is needed to determine the suitability of the antibody for your needs, please contact our Scientific Support team to discuss your requirements. Database link: O14757
ポジティブ・コントロール	WB: HeLa, HEK-293T and Jurkat whole cell lysates. IP: HeLa whole cell lysate. IHC-P: Human breast carcinoma tissue.
特記事項	<p>The Life Science industry has been in the grips of a reproducibility crisis for a number of years. Abcam is leading the way in addressing this with our range of recombinant monoclonal antibodies and knockout edited cell lines for gold-standard validation. Please check that this product meets your needs before purchasing.</p> <p>If you have any questions, special requirements or concerns, please send us an inquiry and/or contact our Support team ahead of purchase. Recommended alternatives for this product can be found below, along with publications, customer reviews and Q&As</p>

製品の特性

製品の状態	Liquid
保存方法	Shipped at 4°C. Upon delivery aliquot and store at -20°C. Avoid freeze / thaw cycles.
バッファー	pH: 7 Preservative: 0.09% Sodium azide Constituents: 0.021% PBS, 1.764% Sodium citrate, 1.815% Tris
精製度	Immunogen affinity purified
ポリ/モノ	ポリクローナル
アイソタイプ	IgG

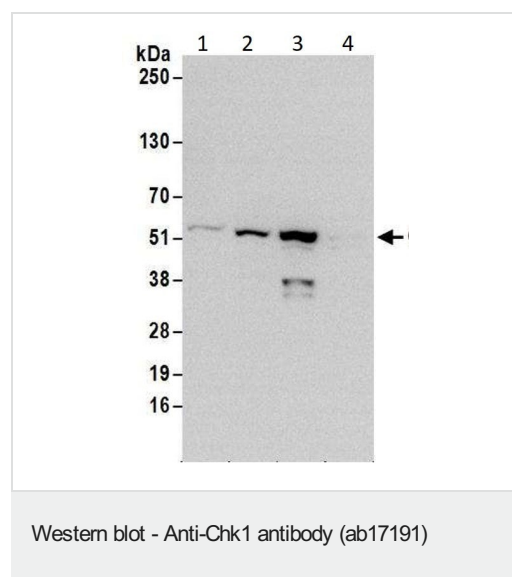
アプリケーション

The Abpromise guarantee Abpromise保証は、次のテスト済みアプリケーションにおけるab17191の使用に適用されます
アプリケーションノートには、推奨の開始希釈率がありますが、適切な希釈率につきましてはご検討ください。

アプリケーション	Abreviews	特記事項
IHC-P		1/1000 - 1/5000.
IP		Use at 2-10 µg/mg of lysate.
WB		1/10000 - 1/25000. Detects a band of approximately 54 kDa (predicted molecular weight: 54 kDa).

ターゲット情報

画像



All lanes : Anti-Chk1 antibody (ab17191) at 0.4 µg/ml

Lane 1 : HeLa (Human cervix adenocarcinoma epithelial cell) whole cell lysate

Lane 2 : HEK-293T (Human epithelial cell line from embryonic kidney transformed with large T antigen) whole cell lysate

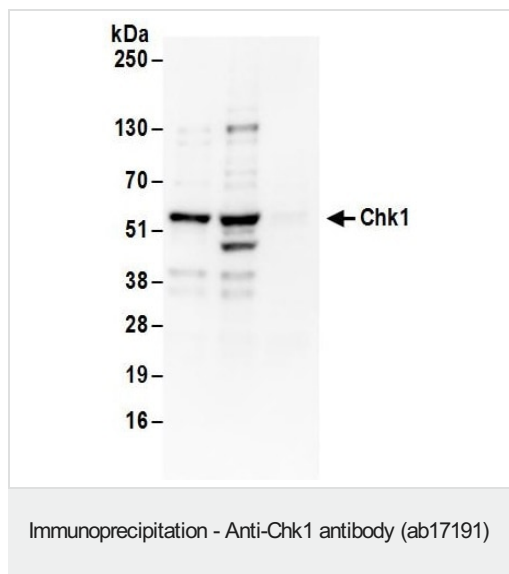
Lane 3 : Jurkat (Human T cell leukemia cell line from peripheral blood) whole cell lysate

Lane 4 : TMCK (Mouse SV40 transformed kidney cell line) whole cell lysate

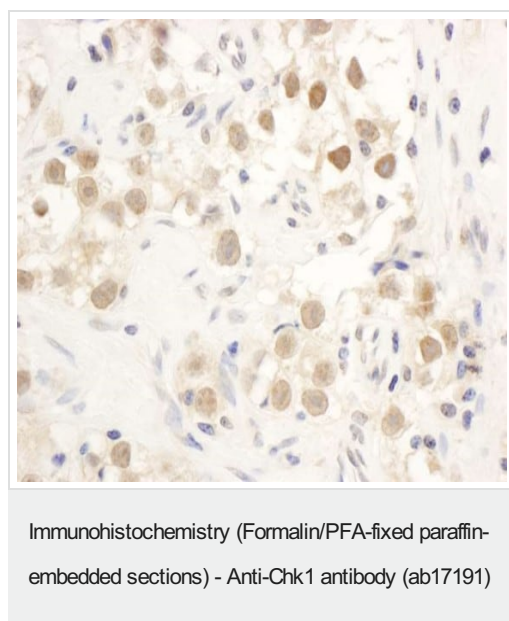
Lysates/proteins at 50 µg per lane.

Predicted band size: 54 kDa

Exposure time: 30 seconds



Detection of Chk1 by immunoprecipitation of whole cell lysate (1.0 mg per IP reaction; 20% of IP loaded) from HeLa cells. Lane 1: Anti-Chk1 antibody (ab17191) at 6 µg/mg lysate, Lane 2: Anti-Chk1 antibody (ab 17191) at 6 µg/mg lysate, Lane 3: Control IgG was used as a negative control. Detection: Chemiluminescence with an exposure time of 1 seconds.



Immunohistochemical (Formalin/PFA-fixed paraffin-embedded sections) analysis of human breast carcinoma tissue labelling Chk1 with ab17191 at 1/1000 dilution. Detection: DAB.

Please note: All products are "FOR RESEARCH USE ONLY. NOT FOR USE IN DIAGNOSTIC PROCEDURES"

Our Abpromise to you: Quality guaranteed and expert technical support

- Replacement or refund for products not performing as stated on the datasheet
- Valid for 12 months from date of delivery
- Response to your inquiry within 24 hours
- We provide support in Chinese, English, French, German, Japanese and Spanish

- Extensive multi-media technical resources to help you
- We investigate all quality concerns to ensure our products perform to the highest standards

If the product does not perform as described on this datasheet, we will offer a refund or replacement. For full details of the Abpromise, please visit <https://www.abcam.co.jp/abpromise> or contact our technical team.

Terms and conditions

- Guarantee only valid for products bought direct from Abcam or one of our authorized distributors