

### Anti-CHD8 antibody ab114126

★★★★★ [1 Abreviews](#) [6 References](#) [画像数 4](#)

#### 製品の概要

製品名	Anti-CHD8 antibody
製品の詳細	Rabbit polyclonal to CHD8
由来種	Rabbit
アプリケーション	<b>適用あり:</b> WB, IP, IHC-P
種交差性	<b>交差種:</b> Mouse, Human <b>交差が予測される動物種:</b> Rabbit, Guinea pig, Chimpanzee, Rhesus monkey, Gorilla, Chinese hamster, Orangutan, Elephant 
免疫原	Synthetic peptide, corresponding to a region within amino acids 325-350 of Human CHD8 (NP_065971.2)
ポジティブ・コントロール	HeLa whole cell lysate ( <a href="#">ab150035</a> )
特記事項	Immunoglobulin concentration was determined by extinction coefficient: absorbance at 280 nm of 1.4 equals 1.0 mg of IgG.  The Life Science industry has been in the grips of a reproducibility crisis for a number of years. Abcam is leading the way in addressing this with our range of recombinant monoclonal antibodies and knockout edited cell lines for gold-standard validation. Please check that this product meets your needs before purchasing.  If you have any questions, special requirements or concerns, please send us an inquiry and/or contact our Support team ahead of purchase. Recommended alternatives for this product can be found below, along with publications, customer reviews and Q&As

#### 製品の特性

製品の状態	Liquid
保存方法	Shipped at 4°C. Upon delivery aliquot and store at -20°C. Avoid freeze / thaw cycles.
バッファー	pH: 7 Preservative: 0.09% Sodium azide Constituent: 99.91% Tris citrate/phosphate  pH: 7-8
精製度	Immunogen affinity purified
特記事項 (精製)	ab114126 was affinity purified using an epitope specific to CHD8 immobilized on a solid support.

ポリモノ  
アイソタイプ

ポリクローナル  
IgG

## アプリケーション

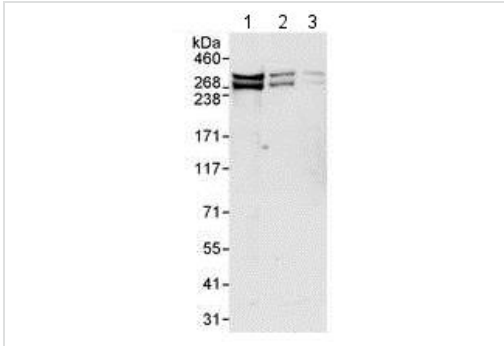
**The Abpromise guarantee** **Abpromise保証は、次のテスト済みアプリケーションにおけるab114126の使用に適用されます**  
アプリケーションノートには、推奨の開始希釈率がありますが、適切な希釈率につきましてはご検討ください。

アプリケーション	Abreviews	特記事項
WB		1/2000 - 1/10000. Predicted molecular weight: 291 kDa.
IP		Use at 2-5 µg/mg of lysate.
IHC-P		1/500 - 1/2000. Perform heat mediated antigen retrieval with citrate buffer pH 6 before commencing with IHC staining protocol.

## ターゲット情報

機能	DNA helicase that acts as a chromatin remodeling factor and regulates transcription. Acts as a transcription repressor by remodeling chromatin structure and recruiting histone H1 to target genes. Suppresses p53/TP53-mediated apoptosis by recruiting histone H1 and preventing p53/TP53 transactivation activity. Acts as a negative regulator of Wnt signaling pathway by regulating beta-catenin (CTNNB1) activity. Negatively regulates CTNNB1-targeted gene expression by being recruited specifically to the promoter regions of several CTNNB1 responsive genes. Involved in both enhancer blocking and epigenetic remodeling at chromatin boundary via its interaction with CTCF. Acts as a suppressor of STAT3 activity by suppressing the LIF-induced STAT3 transcriptional activity. Also acts as a transcription activator via its interaction with ZNF143 by participating to efficient U6 RNA polymerase III transcription.
配列類似性	Belongs to the SNF2/RAD54 helicase family, CHD8 subfamily. Contains 2 chromo domains. Contains 1 helicase ATP-binding domain. Contains 1 helicase C-terminal domain.
翻訳後修飾	Sumoylated.
細胞内局在	Nucleus. Localizes to the promoter regions of several CTNNB1-responsive genes. Also present at known CTCF target sites.

## 画像



Western blot - Anti-CHD8 antibody (ab114126)

**All lanes :** Anti-CHD8 antibody (ab114126) at 0.1 µg/ml

**Lane 1 :** HeLa whole cell lysate at 50 µg

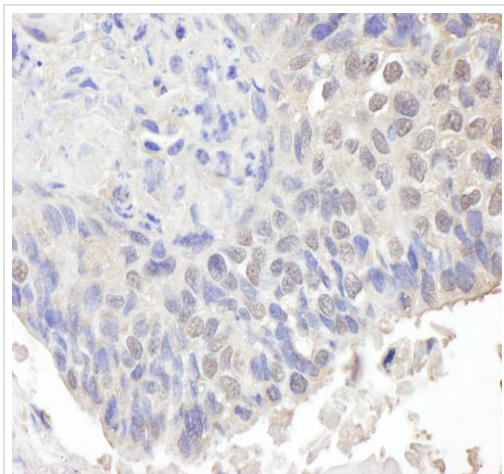
**Lane 2 :** HeLa whole cell lysate at 15 µg

**Lane 3 :** HeLa whole cell lysate at 5 µg

Developed using the ECL technique.

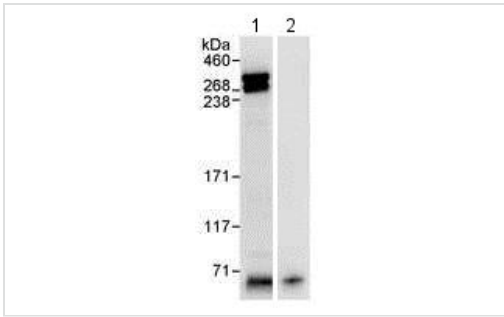
**Predicted band size:** 291 kDa

**Exposure time:** 30 seconds



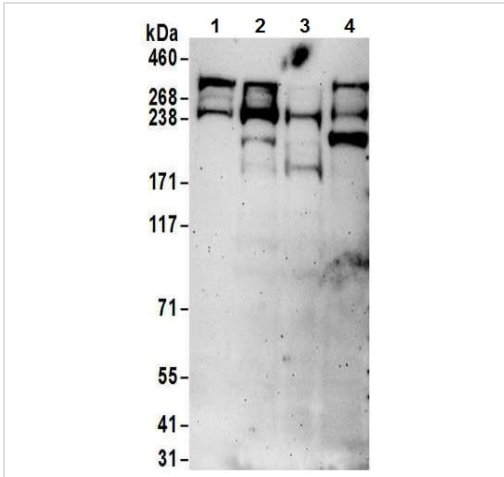
Immunohistochemistry (Formalin/PFA-fixed paraffin-embedded sections) - Anti-CHD8 antibody (ab114126)

Immunohistochemistry (Formalin/PFA-fixed paraffin-embedded sections) analysis of human ovarian carcinoma tissue labelling CHD8 with ab114126 at 1/1000 (1µg/ml). Detection: DAB.



Immunoprecipitation - Anti-CHD8 antibody  
(ab114126)

ab114126 at 3ug/mg of lysate detecting CHD8 by immunoprecipitation (lane 1). 1 mg of HeLa whole cell lysate was used, 20% of immunoprecipitate was loaded. Lane 2: IgG control. Detection: chemiluminescence. Exposure time: 30 seconds.



Western blot - Anti-CHD8 antibody (ab114126)

**All lanes :** Anti-CHD8 antibody (ab114126) at 0.1 µg/ml

**Lane 1 :** HeLa whole cell lysate

**Lane 2 :** 293T whole cell lysate

**Lane 3 :** Jurkat whole cell lysate

**Lane 4 :** TCMK-1 whole cell lysate

Lysates/proteins at 50 µg per lane.

Developed using the ECL technique.

**Predicted band size:** 291 kDa

**Exposure time:** 3 minutes

**Please note:** All products are "FOR RESEARCH USE ONLY. NOT FOR USE IN DIAGNOSTIC PROCEDURES"

### Our Abpromise to you: Quality guaranteed and expert technical support

- Replacement or refund for products not performing as stated on the datasheet
- Valid for 12 months from date of delivery
- Response to your inquiry within 24 hours
- We provide support in Chinese, English, French, German, Japanese and Spanish
- Extensive multi-media technical resources to help you
- We investigate all quality concerns to ensure our products perform to the highest standards

If the product does not perform as described on this datasheet, we will offer a refund or replacement. For full details of the Abpromise, please visit <https://www.abcam.co.jp/abpromise> or contact our technical team.

### Terms and conditions

- Guarantee only valid for products bought direct from Abcam or one of our authorized distributors