


Anti-CHD6 antibody ab114095

2 References [画像数 2](#)

製品の概要

製品名	Anti-CHD6 antibody
製品の詳細	Rabbit polyclonal to CHD6
由来種	Rabbit
アプリケーション	適用あり: WB, IP
種交差性	交差種: Human 交差が予測される動物種: Chimpanzee, Gorilla, Orangutan 
免疫原	Synthetic peptide, corresponding to a region between amino acids 2665- 2715 of Human CHD6 (NP_115597.3).
ポジティブ・コントロール	Whole cell lysate from Hela cells.
特記事項	<p>The Life Science industry has been in the grips of a reproducibility crisis for a number of years. Abcam is leading the way in addressing this with our range of recombinant monoclonal antibodies and knockout edited cell lines for gold-standard validation. Please check that this product meets your needs before purchasing.</p> <p>If you have any questions, special requirements or concerns, please send us an inquiry and/or contact our Support team ahead of purchase. Recommended alternatives for this product can be found below, along with publications, customer reviews and Q&As</p>

製品の特性

製品の状態	Liquid
保存方法	Shipped at 4°C. Upon delivery aliquot and store at -20°C. Avoid freeze / thaw cycles.
バッファー	<p>pH: 7</p> <p>Preservative: 0.09% Sodium azide</p> <p>Constituent: 99% Tris citrate/phosphate</p> <p>pH: 7 to 8</p>
精製度	Immunogen affinity purified
特記事項(精製)	ab114095 was affinity purified using an epitope specific to CHD6 immobilized on solid support.
ポリ/モノ	ポリクローナル
アイソタイプ	IgG

アプリケーション

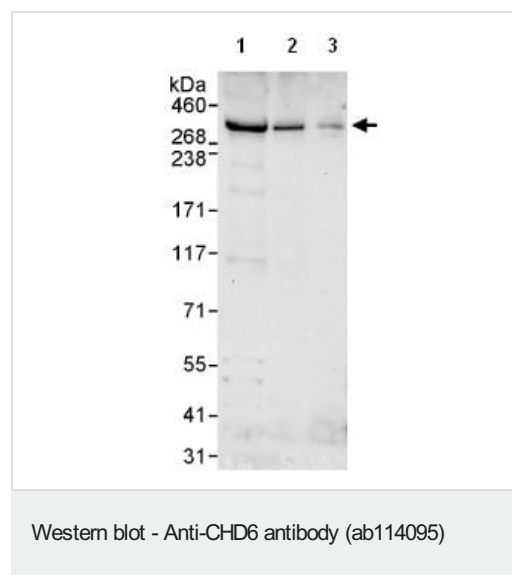
The Abpromise guarantee Abpromise保証は、 次のテスト済みアプリケーションにおけるab114095の使用に適用されます
アプリケーションノートには、推奨の開始希釈率がありますが、適切な希釈率につきましてはご確認ください。

アプリケーション	Abreviews	特記事項
WB		1/2000 - 1/10000. Predicted molecular weight: 305 kDa.
IP		Use at 2-5 µg/mg of lysate.

ターゲット情報

機能	Probable transcription regulator.
組織特異性	Ubiquitous.
配列類似性	Belongs to the SNF2/RAD54 helicase family. Contains 2 chromo domains. Contains 1 helicase ATP-binding domain. Contains 1 helicase C-terminal domain.
翻訳後修飾	Phosphorylated upon DNA damage, probably by ATM or ATR.
細胞内局在	Nucleus.

画像



All lanes : Anti-CHD6 antibody (ab114095) at 0.1 µg/ml

Lane 1 : Whole cell lysate from HeLa cells at 50 µg

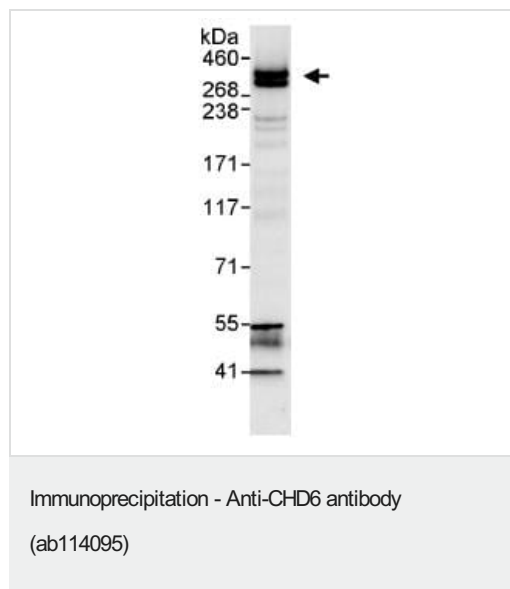
Lane 2 : Whole cell lysate from HeLa cells at 15 µg

Lane 3 : Whole cell lysate from HeLa cells at 5 µg

Developed using the ECL technique.

Predicted band size: 305 kDa

Exposure time: 30 seconds



ab114095, at 1 µg/ml, staining CHD6 in HeLa whole cell lysate immunoprecipitated using ab114095 at 3 µg/mg lysate (1 mg for IP; 20% of IP loaded/lane). Detection: Chemiluminescence with an exposure time of 10 seconds.

Please note: All products are "FOR RESEARCH USE ONLY. NOT FOR USE IN DIAGNOSTIC PROCEDURES"

Our Abpromise to you: Quality guaranteed and expert technical support

- Replacement or refund for products not performing as stated on the datasheet
- Valid for 12 months from date of delivery
- Response to your inquiry within 24 hours
- We provide support in Chinese, English, French, German, Japanese and Spanish
- Extensive multi-media technical resources to help you
- We investigate all quality concerns to ensure our products perform to the highest standards

If the product does not perform as described on this datasheet, we will offer a refund or replacement. For full details of the Abpromise, please visit <https://www.abcam.co.jp/abpromise> or contact our technical team.

Terms and conditions

- Guarantee only valid for products bought direct from Abcam or one of our authorized distributors